

Point de vue Les Baux



Attribution : (Marie Defise)



Useful information

Category : Discovery and recreation

Description

The "Les Baux" viewpoint has recently been fitted out with an overhang and an acoustic cone offering a view of the former Mergyre campsite.

It can be reached from the Cugnon road towards Auby (or Auby Cugnon if you are coming down from Auby!).

As you leave Cugnon and go up the Auby road, you will see the chapel of Notre-Dame du Prompt Secours on your right (the door is open non-stop). You can park here (on the top of a nearby tree is the sign "Point de Vue Le Mergyre"). If you take the path to the left of the chapel and go straight on, you will come to the Chemin Chauchet or Warnichamme, which curves down along the Semois and joins the route des Munos (Bertrix/Mortehan).

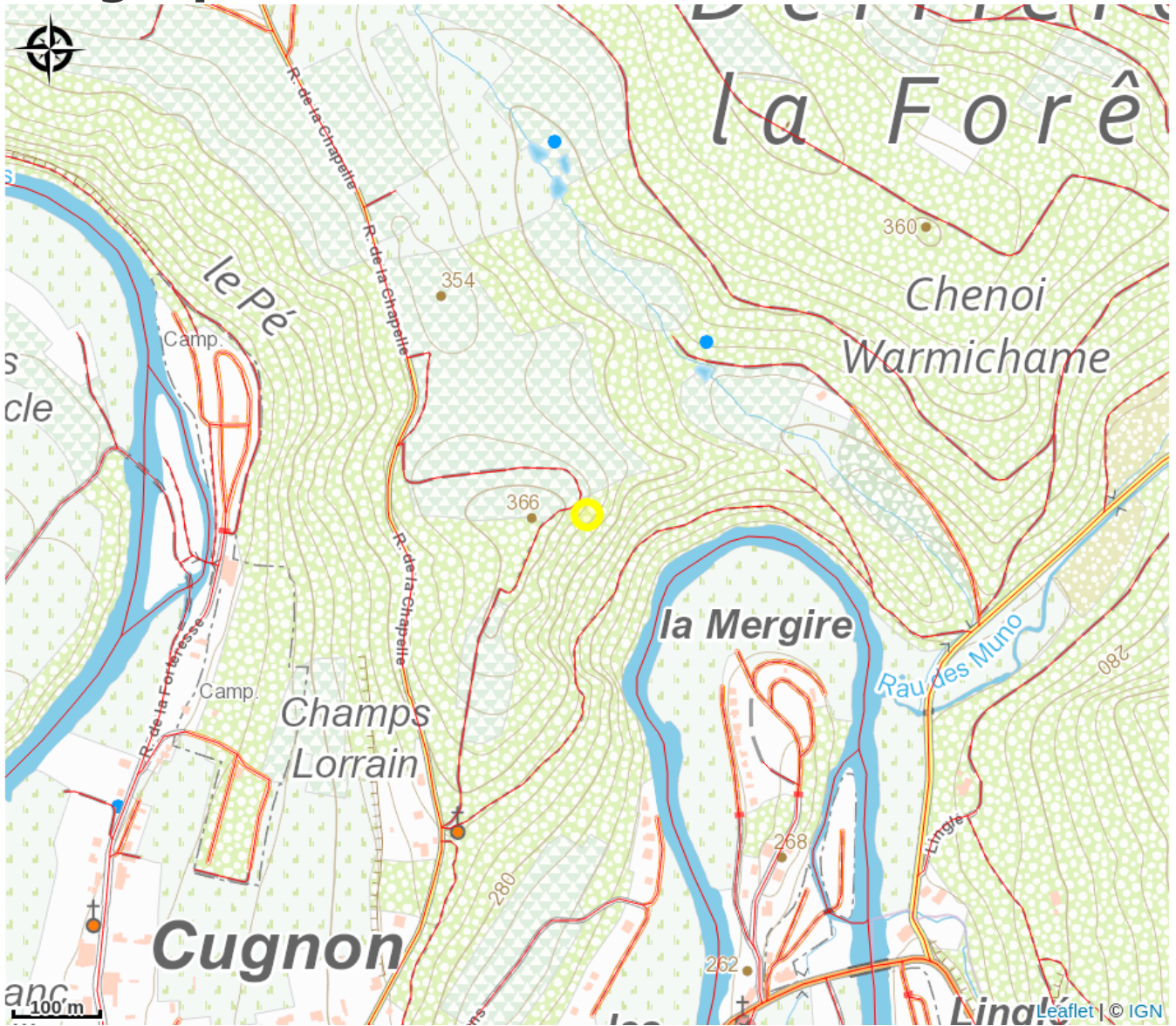
But this is not the route to Les Baux. On the left is another, wider path through undergrowth. This is a steep path that leads straight to the viewpoint at Les Baux.

From here you can see the cone, the viewpoint overlooking the Semois, the forests, part (right) of the village of Mortehan and the small campsite Les Ochays, while on the left you will find the route des Munos, the old Moulin de Mortehan where Dom Malachie Bertrand, deported to the penal colony of Cayenne, lived (not the Moulin de Cugnon, which is near the bridge with its paddle wheel).

Discovery categories

Natural heritage, Panorama, viewpoint, scenery.

Geographical location



All useful information

Contact

6880 - Cugnon