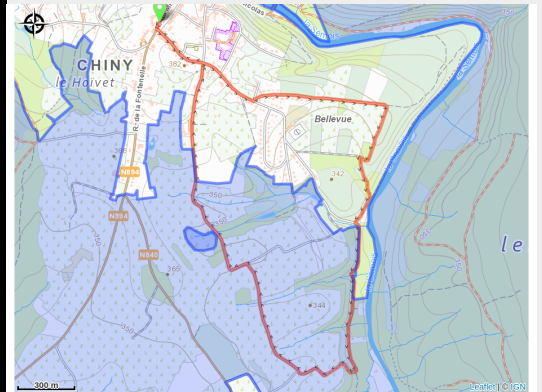


Les dix Fosses



No photo



Useful information

Practice : On foot

Length : 5.8 km

Trek ascent : 101 m

Difficulty : Easy

Type : Loop

Trek

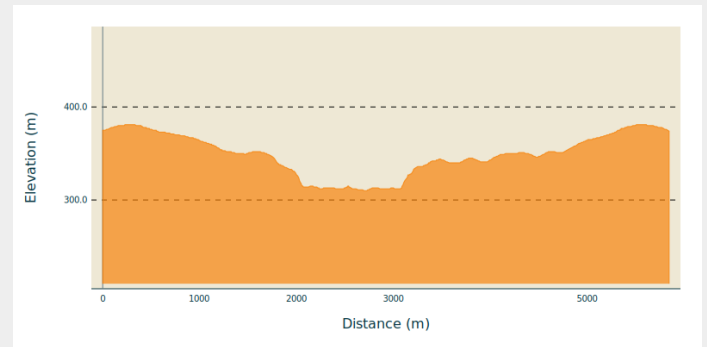
Departure : 6810 - Chiny

Arrival : 6810 - Chiny

Markings : ■ N1 - Green

Cities : 1. Chiny

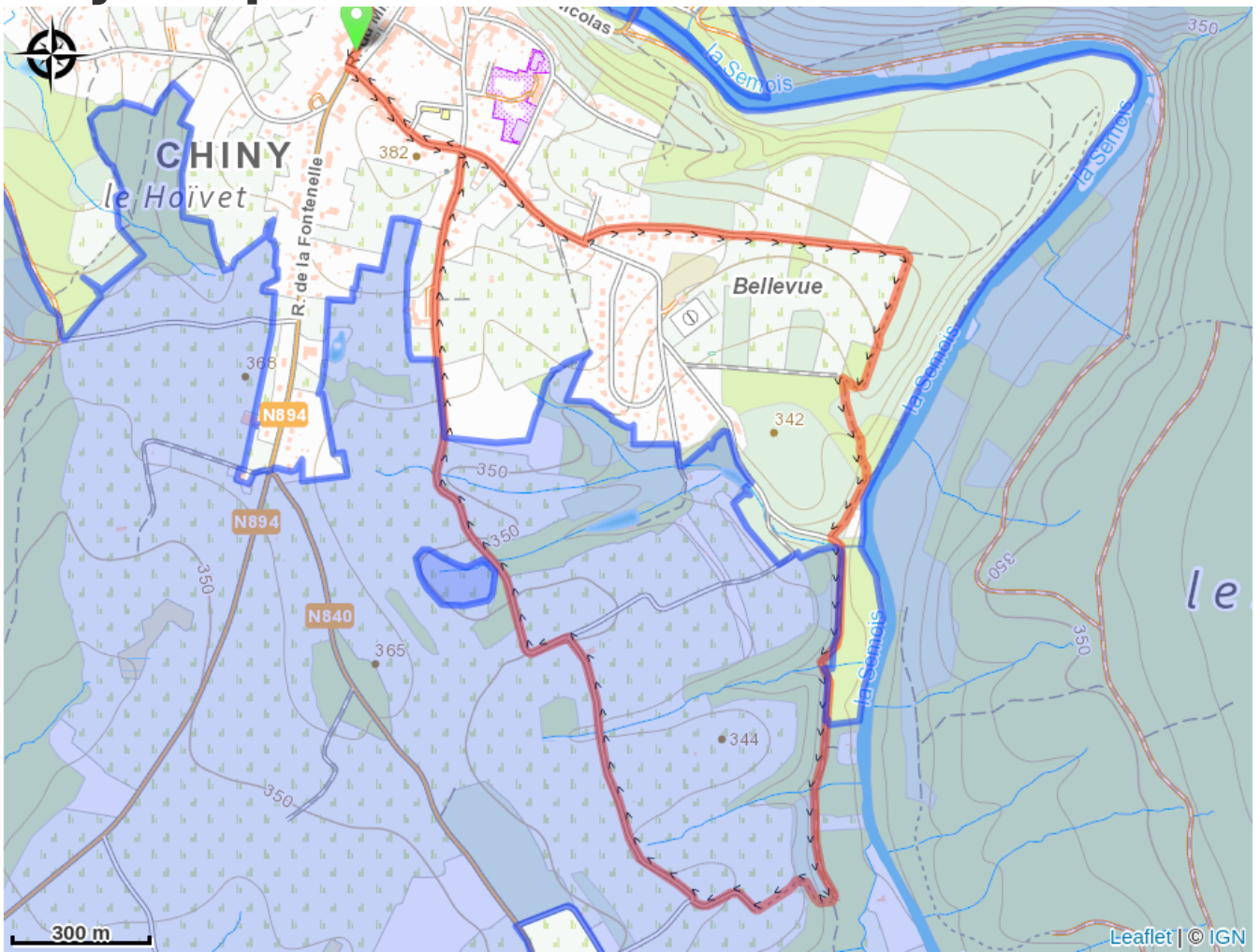
Altimetric profile



Min elevation 310 m Max elevation 381 m

Balade au départ de l'ancien bureau du tourisme de Chiny. Tantôt dans le village, tantôt le long de l'eau ...balisage parfois difficile.

On your path...



All useful information

Environmental sensitive areas

Along your trek, you will go through sensitive areas related to the presence of a specific species or environment. In these areas, an appropriate behaviour allows to contribute to their preservation. For detailed information, specific forms are accessible for each area.

Bassin de la Semois de Jamoigne à Chiny

Sensitivity period:

Contact:

[Biodiversité Wallonie](#)



Ile du Pont Saint-Nicolas (Chiny)

Sensitivity period:

Contact:

[Biodiversité Wallonie](#)

Site of high biological interest

Marais au sud de Chiny (Chiny)

Sensitivity period:

Contact:

[Biodiversité Wallonie](#)

Site of high biological interest