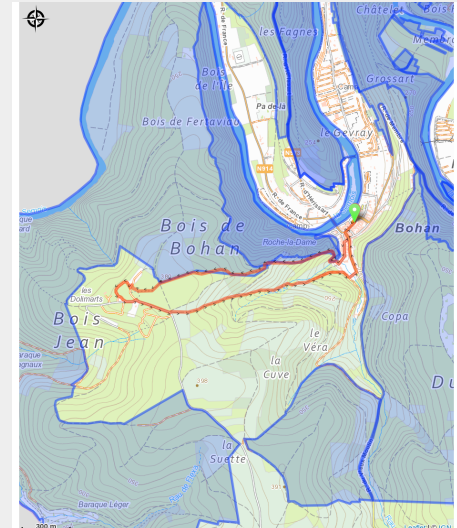
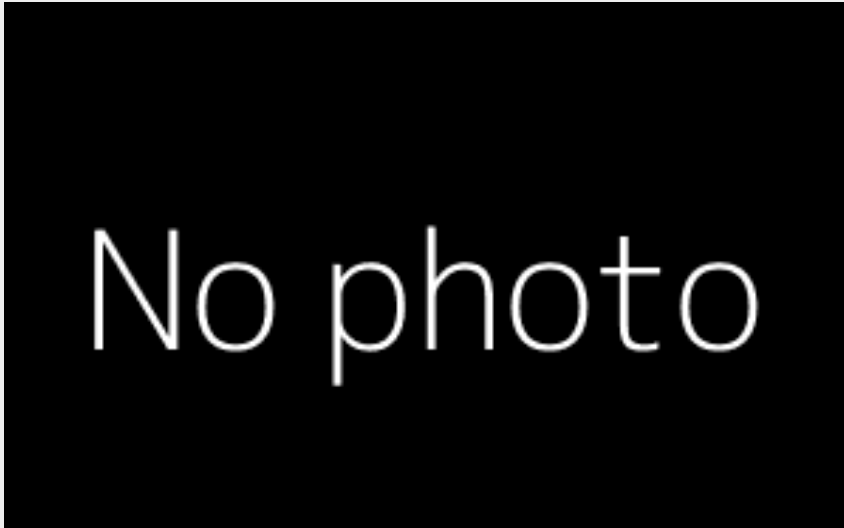


Le vera



Useful information

Practice : On foot

Duration : 1 h 30

Length : 4.1 km

Trek ascent : 223 m

Difficulty : Medium

Type : Loop

Trek

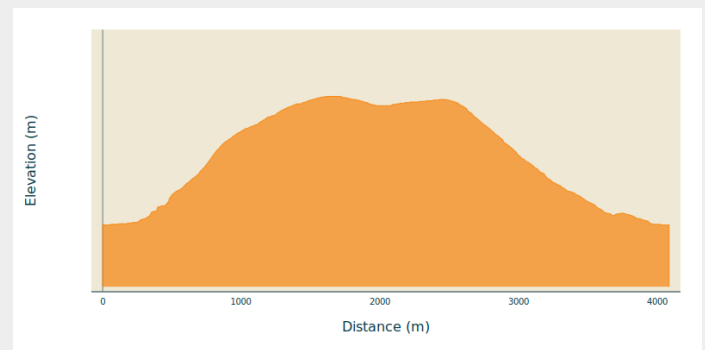
Departure : 5550 - Bohan

Arrival : 5550 - Bohan

Markings : ■ Vertical rectangle - Yellow

Cities : 1. Vresse-sur-Semois

Altimetric profile



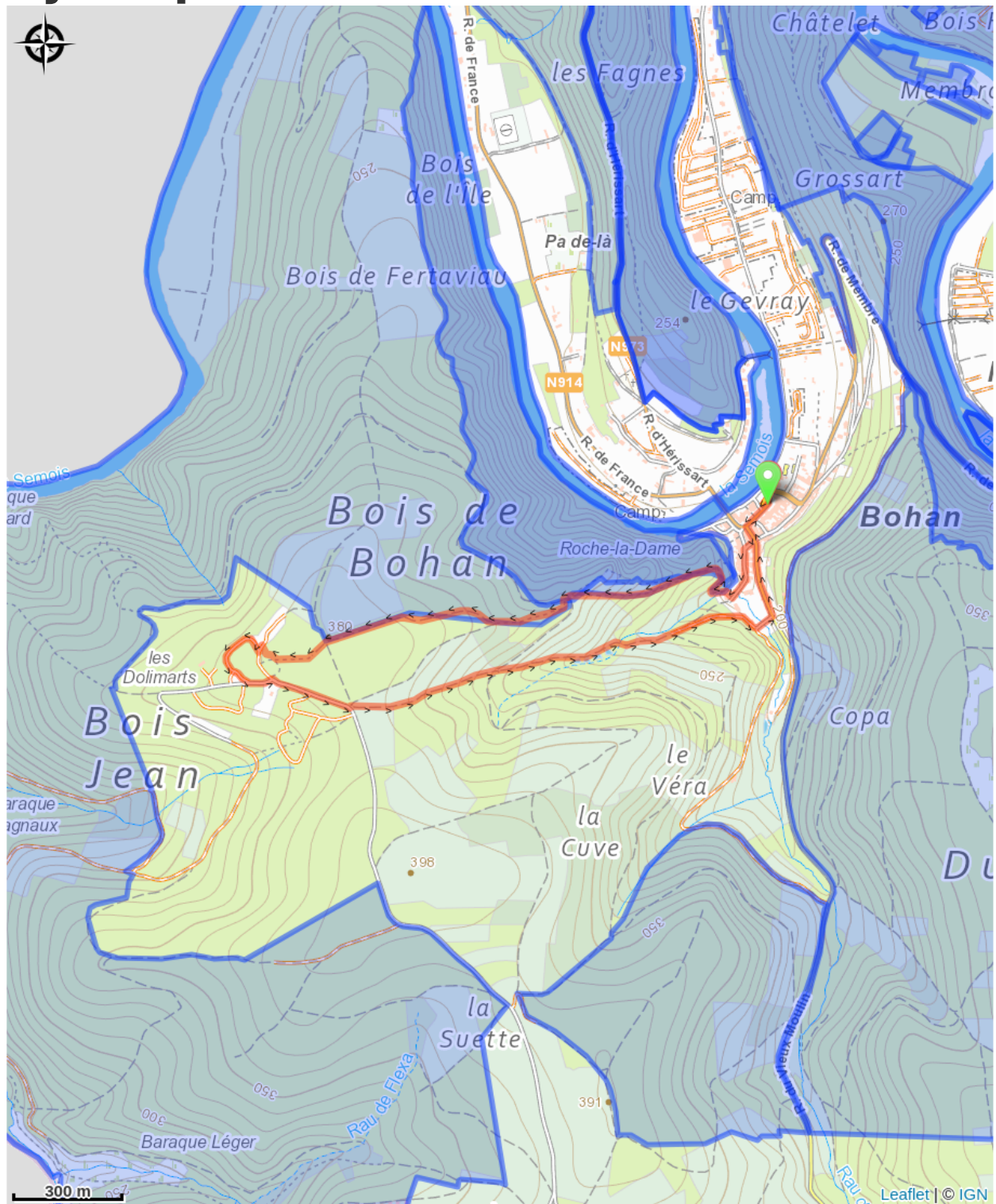
Min elevation 171 m Max elevation 379 m

This short walk starts in Bohan and takes you along a narrow, steep path to the viewpoint of the cross. It then climbs slowly up to Les Dolimarts. This was once a popular holiday resort. It is currently being rebuilt to welcome tourists back to the beautiful natural surroundings.

The return journey is along a path that has been heavily eroded by rainwater. Sturdy, waterproof footwear is recommended in wet weather.

Translated with www.DeepL.com/Translator (free version)

On your path...



All useful information

Environmental sensitive areas

Along your trek, you will go through sensitive areas related to the presence of a specific species or environment. In these areas, an appropriate behaviour allows to contribute to their preservation. For detailed information, specific forms are accessible for each area.

Vallée de la Semois en aval d'Alle

Sensitivity period:

Contact:

[Biodiversité Wallonie](#)



Bohan-Membre (Vresse-sur-Semois)

Sensitivity period:

Contact:

[Biodiversité Wallonie](#)

Site of high biological interest