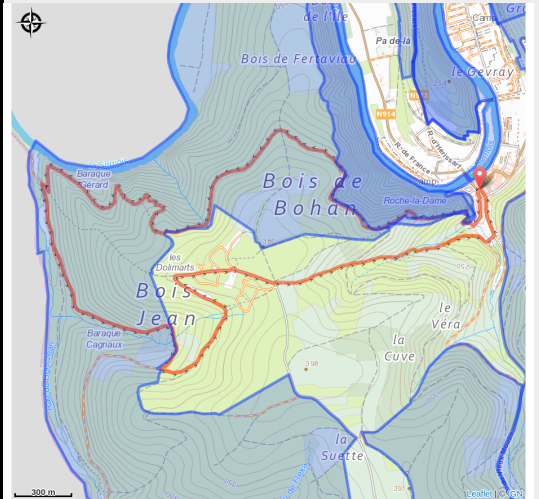


# Le bois Jean



No photo



## Useful information

Practice : On foot

Duration : 2 h 30

Length : 8.7 km

Trek ascent : 416 m

Difficulty : Medium

Type : Loop

# Trek

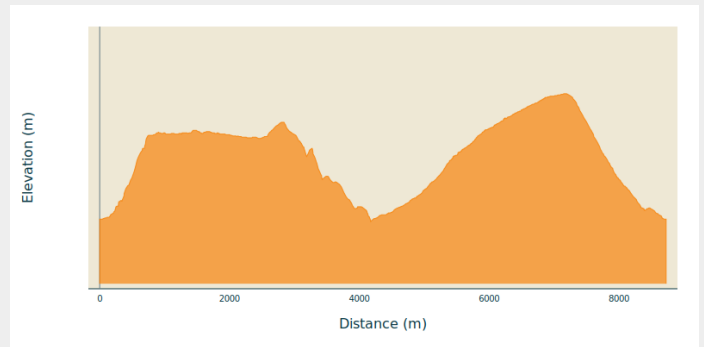
**Departure** : 5550 - Bohan

**Arrival** : 5550 - Bohan

**Markings** : ■ Vertical rectangle - Blue

**Cities** : 1. Vresse-sur-Semois

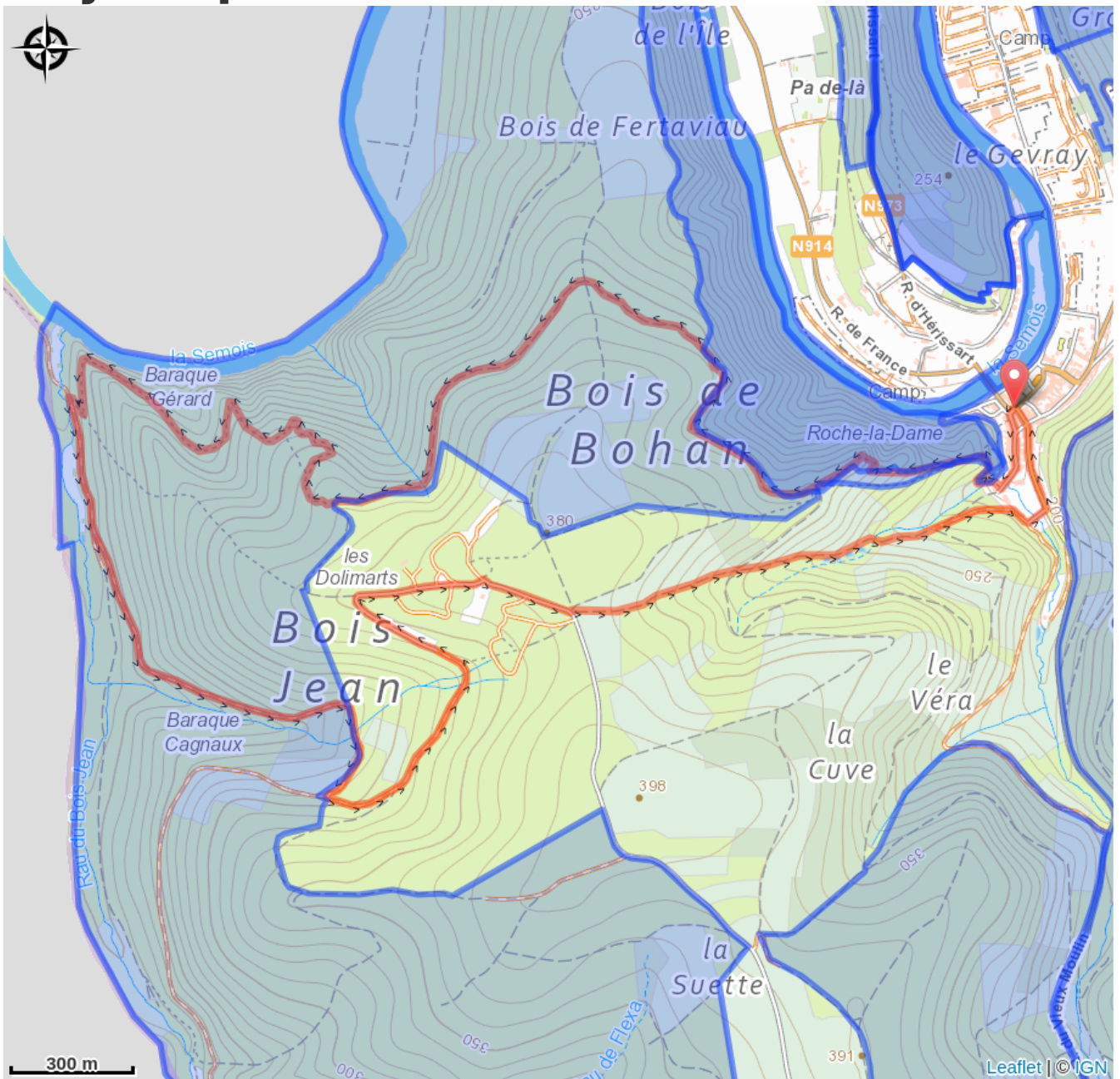
## Altimetric profile



Min elevation 168 m Max elevation 374 m

Adventurous paths, beautiful viewpoints, quiet forest lanes and the proximity of the Semois.... in short, a varied tour.

# On your path...



# All useful information

# Environmental sensitive areas

Along your trek, you will go through sensitive areas related to the presence of a specific species or environment. In these areas, an appropriate behaviour allows to contribute to their preservation. For detailed information, specific forms are accessible for each area.

## Vallée de la Semois en aval d'Alle

Sensitivity period:

Contact:

[Biodiversité Wallonie](#)



### **Bohan-Membre (Vresse-sur-Semois)**

Sensitivity period:

Contact:

[Biodiversité Wallonie](#)

Site of high biological interest