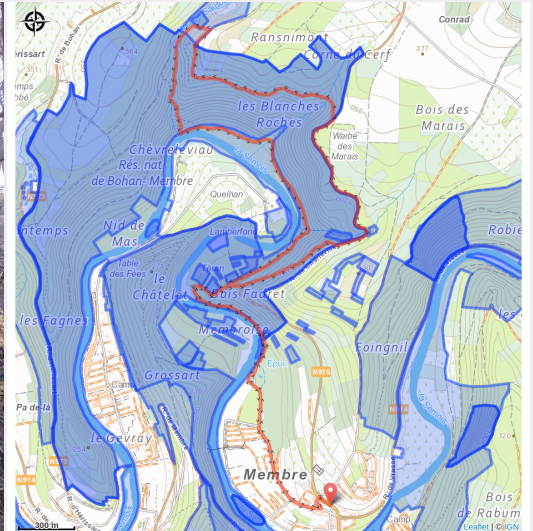


Le Sautou



(Marc Poleyn)



Useful information

Practice : On foot

Duration : 3 h

Length : 9.5 km

Trek ascent : 322 m


Difficulty : Difficult

Type : Loop

Trek

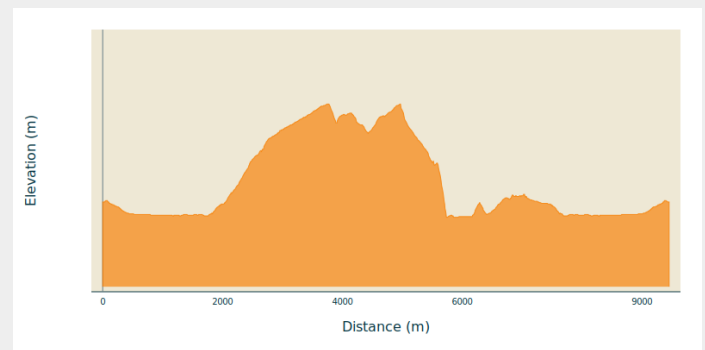
Departure : 5550 - Membre

Arrival : 5550 - Membre

Markings :  Rectangle with inlay - Green

Cities : 1. Vresse-sur-Semois

Altimetric profile



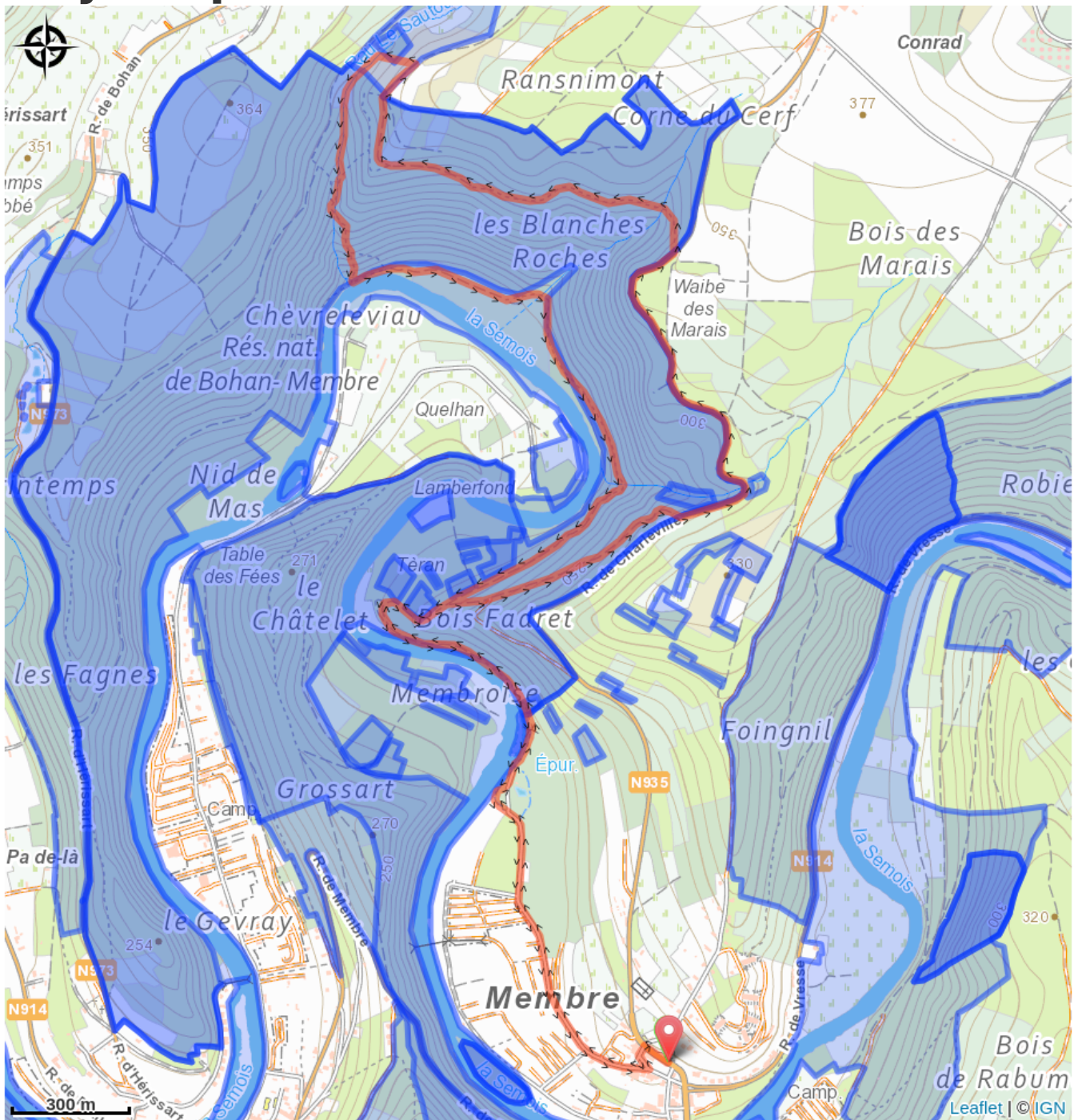
Min elevation 174 m Max elevation 337 m

Very varied hike with nice sections along the Semois. The descent alongside the fast-flowing brook "le Sautou" is beautiful but quite adventurous. For one and a half km the trail follows the street from where you also have access to the viewpoint "le Jambon de la Semois". This part is not recommended for children.

From the village of Membre you can walk back and forth until the start of the loop at the "Bois Fadret".

Translated with www.DeepL.com/Translator (free version)

On your path...



All useful information

Environmental sensitive areas

Along your trek, you will go through sensitive areas related to the presence of a specific species or environment. In these areas, an appropriate behaviour allows to contribute to their preservation. For detailed information, specific forms are accessible for each area.

Vallée de la Semois en aval d'Alle

Sensitivity period:

Contact:

[Biodiversité Wallonie](#)



Bohan-Membre (Vresse-sur-Semois)

Sensitivity period:

Contact:

[Biodiversité Wallonie](#)

Site of high biological interest

Ile de Membroise (Vresse-sur-Semois)

Sensitivity period:

Contact:

[Biodiversité Wallonie](#)

Site of high biological interest

Forêt alluviale de Lamberfond (Vresse-sur-Semois)

Sensitivity period:

Contact:

[Biodiversité Wallonie](#)

Site of high biological interest

Ile de la Roche aux Chevesnes (Vresse-sur-Semois)

Sensitivity period:

Contact:

[Biodiversité Wallonie](#)

Site of high biological interest

Ile de Membre (Vresse-sur-Semois)

Sensitivity period:

Contact:

[Biodiversité Wallonie](#)

Site of high biological interest

Ile de Quelhan (Vresse-sur-Semois)

Sensitivity period:

Contact:

[Biodiversité Wallonie](#)

Site of high biological interest

Membre (Ile de)

Sensitivity period:

Contact:

[Biodiversité Wallonie](#)

Wetland of biological interest

Basse Semois

Sensitivity period:

Contact:

[Biodiversité Wallonie](#)

Accredited nature reserve

Vresse-sur- Semois

Sensitivity period:

Contact:

[Biodiversité Wallonie](#)

Forest reserve

