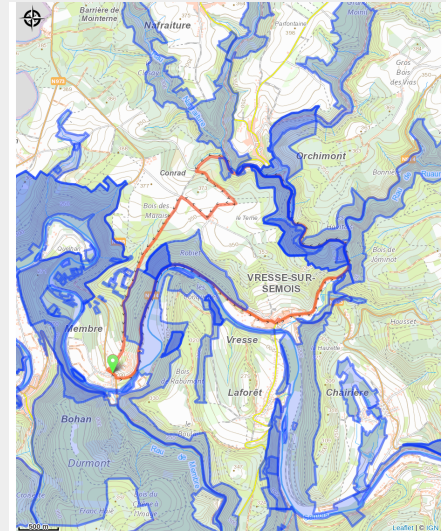
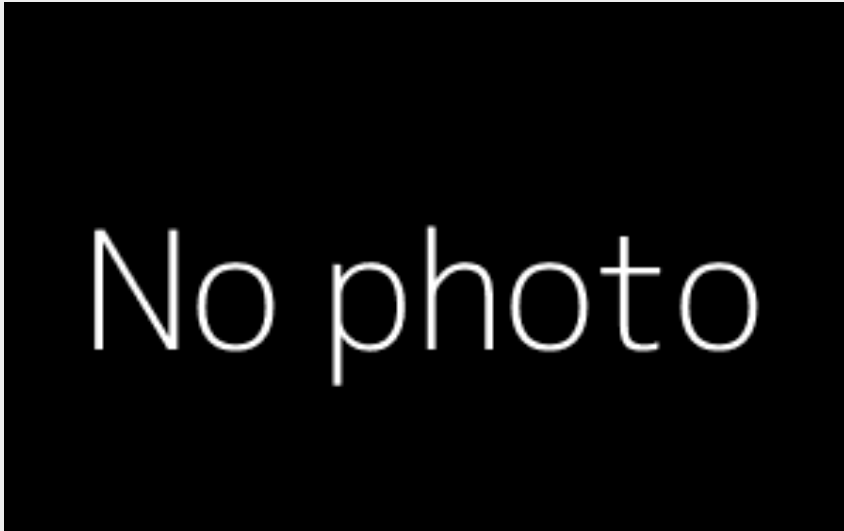


# Circuit du maquis



## Useful information

---

Practice : Mountain bike

---

Length : 12.7 km

---

Trek ascent : 238 m

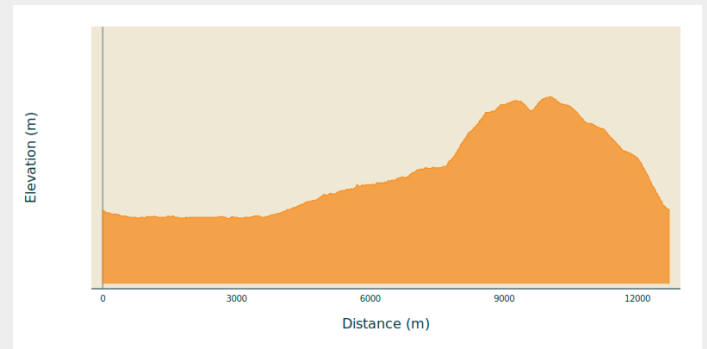
---

Type : Loop

# Trek

**Departure** : 5550 - Membre  
**Arrival** : 5550 - Membre  
**Markings** : 🟡 N3 - Green  
**Cities** : 1. Vresse-sur-Semois

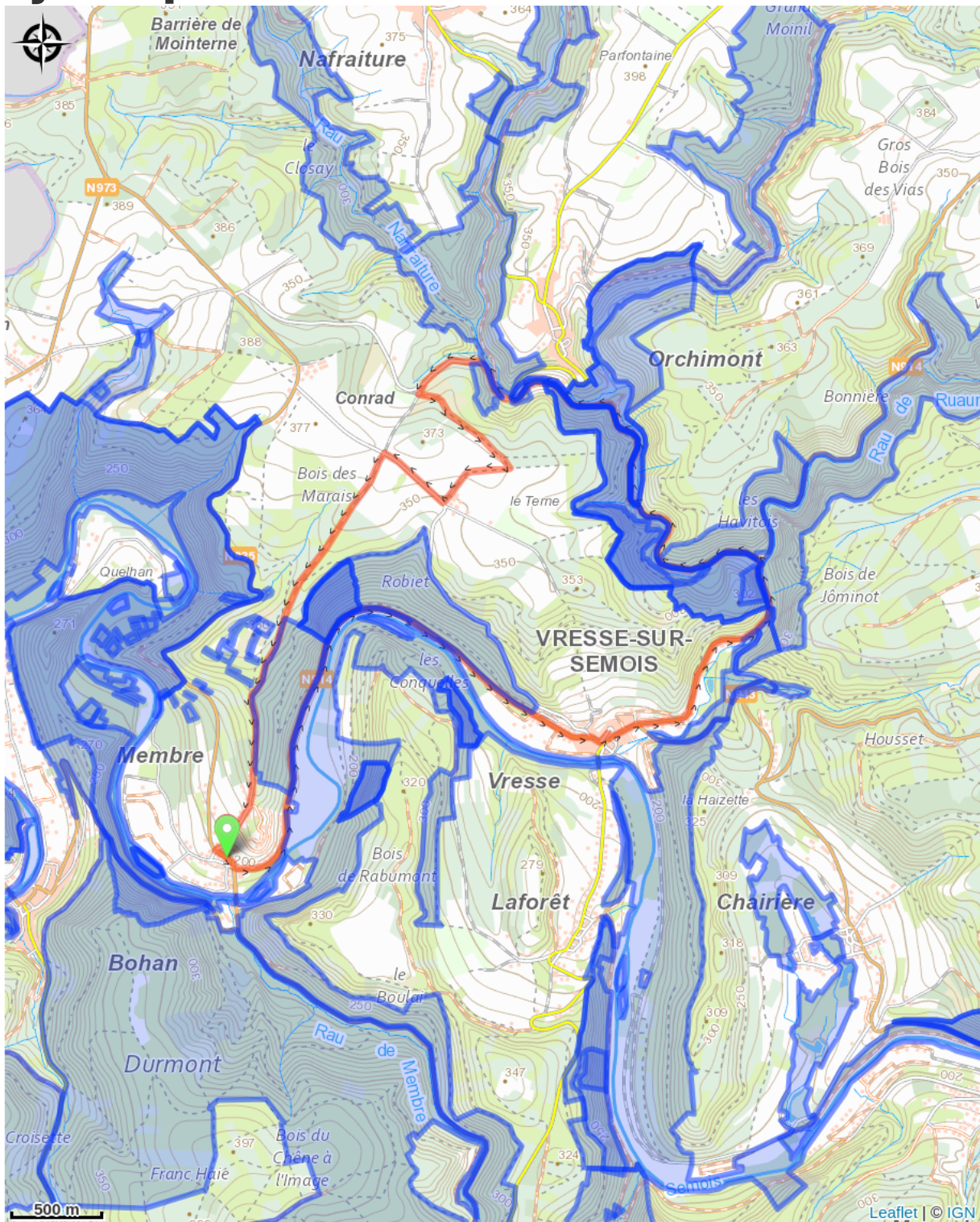
## Altimetric profile



Min elevation 182 m Max elevation 369 m

vtt

# On your path...



# All useful information

# Environmental sensitive areas

Along your trek, you will go through sensitive areas related to the presence of a specific species or environment. In these areas, an appropriate behaviour allows to contribute to their preservation. For detailed information, specific forms are accessible for each area.

## Vallée de la Semois en aval d'Alle

Sensitivity period:

Contact:

[Biodiversité Wallonie](#)



### **Bohan-Membre (Vresse-sur-Semois)**

Sensitivity period:

Contact:

[Biodiversité Wallonie](#)

Site of high biological interest

## Bassin du Ruisseau du Ru au Moulin

Sensitivity period:

Contact:

[Biodiversité Wallonie](#)



### **Forêt alluviale de Laforêt (Vresse-sur-Semois)**

Sensitivity period:

Contact:

[Biodiversité Wallonie](#)

Site of high biological interest

## Ile de la Roche aux Chevesnes (Vresse-sur-Semois)

Sensitivity period:

Contact:

[Biodiversité Wallonie](#)

Site of high biological interest

### **Ile de Membre (Vresse-sur-Semois)**

Sensitivity period:

Contact:

[Biodiversité Wallonie](#)

Site of high biological interest

### **Iles des Conquelles (Vresse-sur-Semois)**

Sensitivity period:

Contact:

[Biodiversité Wallonie](#)

Site of high biological interest

### **Orchimont (Bièvre; Vresse-sur-Semois)**

Sensitivity period:

Contact:

[Biodiversité Wallonie](#)

Site of high biological interest

### **Membre (Ile de)**

Sensitivity period:

Contact:

[Biodiversité Wallonie](#)

Wetland of biological interest

### **Basse Semois**

Sensitivity period:

Contact:

[Biodiversité Wallonie](#)

Accredited nature reserve

## **Vresse-sur- Semois**

Sensitivity period:

Contact:

[Biodiversité Wallonie](#)

Forest reserve