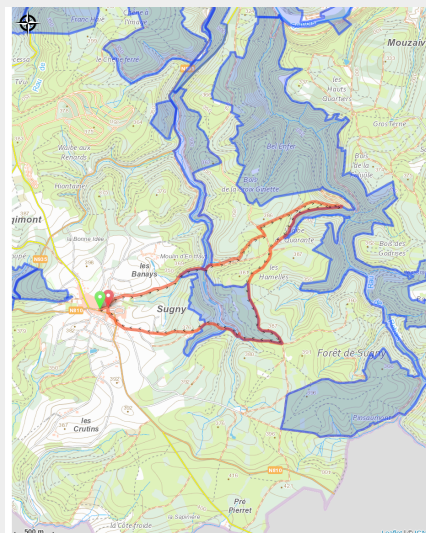


Le chêne au visagea



No photo



Useful information

Practice : On foot

Duration : 2 h 30

Length : 9.5 km

Trek ascent : 262 m


Difficulty : Easy

Type : Loop

Trek

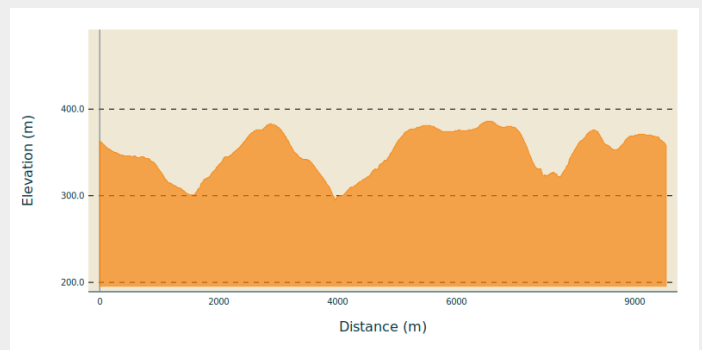
Departure : 5550 - Sugny

Arrival : 5550 - Sugny

Markings :  Rectangle with inlay - Red

Cities : 1. Vresse-sur-Semois

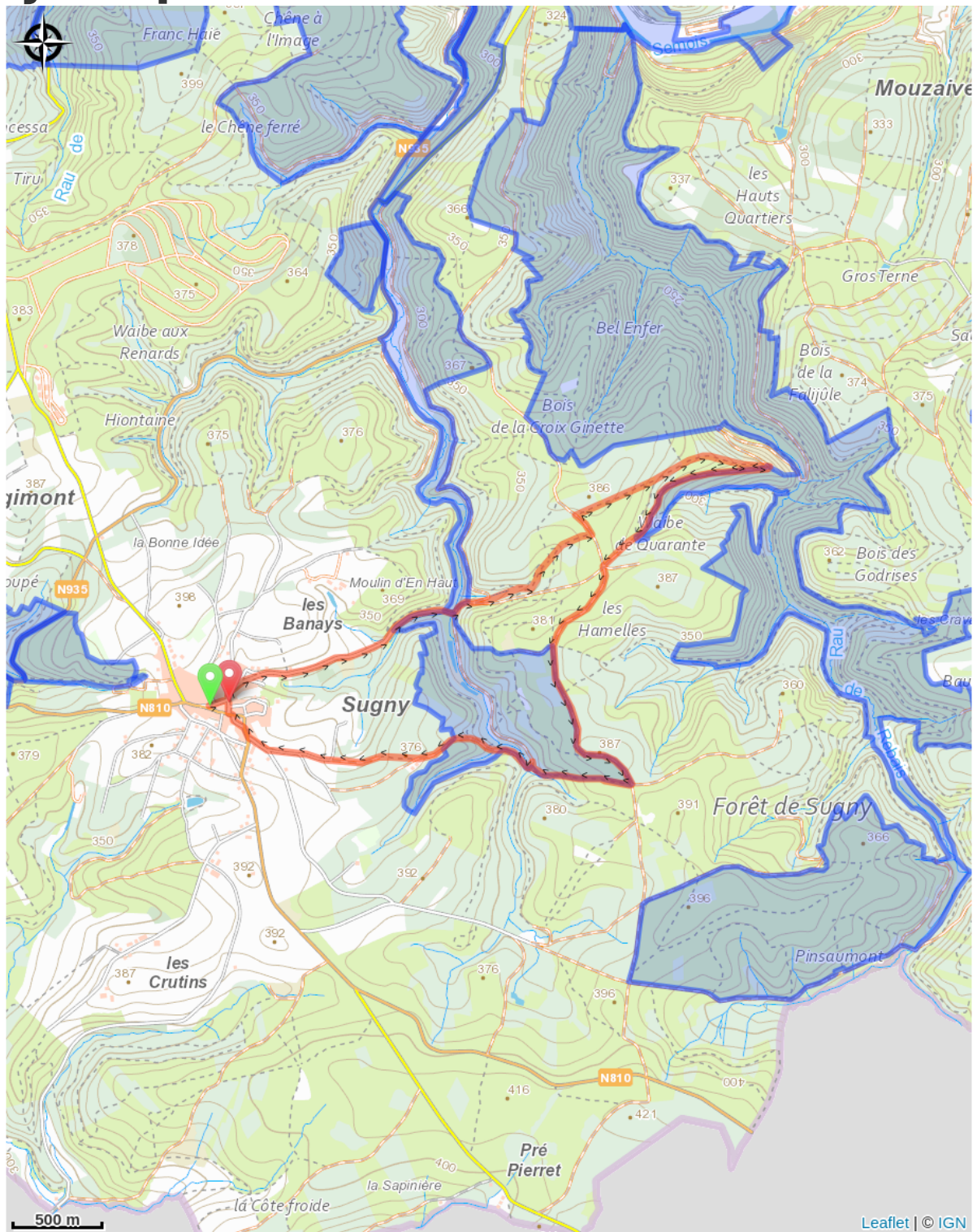
Altimetric profile



Min elevation 295 m Max elevation 386 m

Nice quiet forest walk with not too much height difference. At the end of the quiet track leading out of the village, you come to a pleasant covered picnic area. The walk then follows wide paths through the forest with mainly deciduous trees. You pass the Chêne au Visage, an impressive natural monument. The Fontaine l'Ermite and a dilapidated tree-hugger's hut give you an impression of a long past.

On your path...



All useful information

Environmental sensitive areas

Along your trek, you will go through sensitive areas related to the presence of a specific species or environment. In these areas, an appropriate behaviour allows to contribute to their preservation. For detailed information, specific forms are accessible for each area.

Vallée du Ruisseau de Rebais

Sensitivity period:

Contact:

[Biodiversité Wallonie](#)



Vallée du Ruisseau de la Goutelle

Sensitivity period:

Contact:

[Biodiversité Wallonie](#)



Vallée de la Semois en aval d'Alle

Sensitivity period:

Contact:

[Biodiversité Wallonie](#)



Erablière de Laid Laquay (Vresse-sur-Semois)

Sensitivity period:

Contact:

[Biodiversité Wallonie](#)

Site of high biological interest

Vresse-sur- Semois

Sensitivity period:

Contact:

[Biodiversité Wallonie](#)

Forest reserve