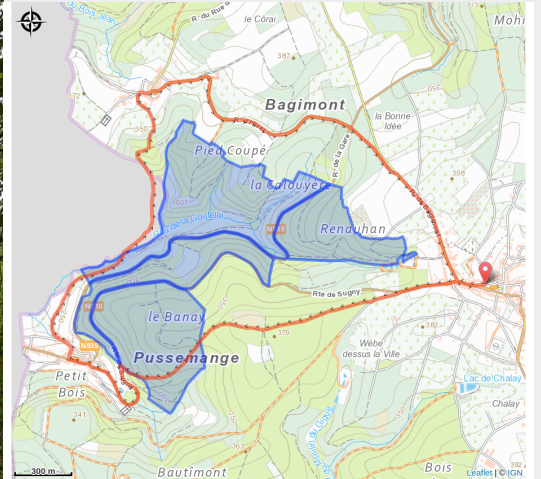


La Goutelle



(MTPBA)



Useful information

Practice : On foot

Duration : 2 h

Length : 7.5 km

Trek ascent : 208 m


Difficulty : Medium

Type : Loop

Trek

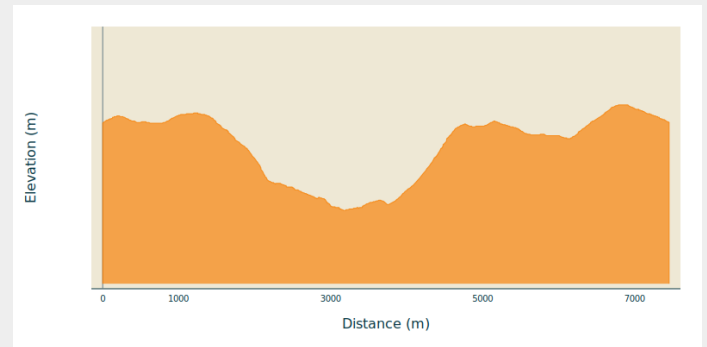
Departure : 5550 - Sugny

Arrival : 5550 - Sugny

Markings :  Rectangle with inlay - Green

Cities : 1. Vresse-sur-Semois

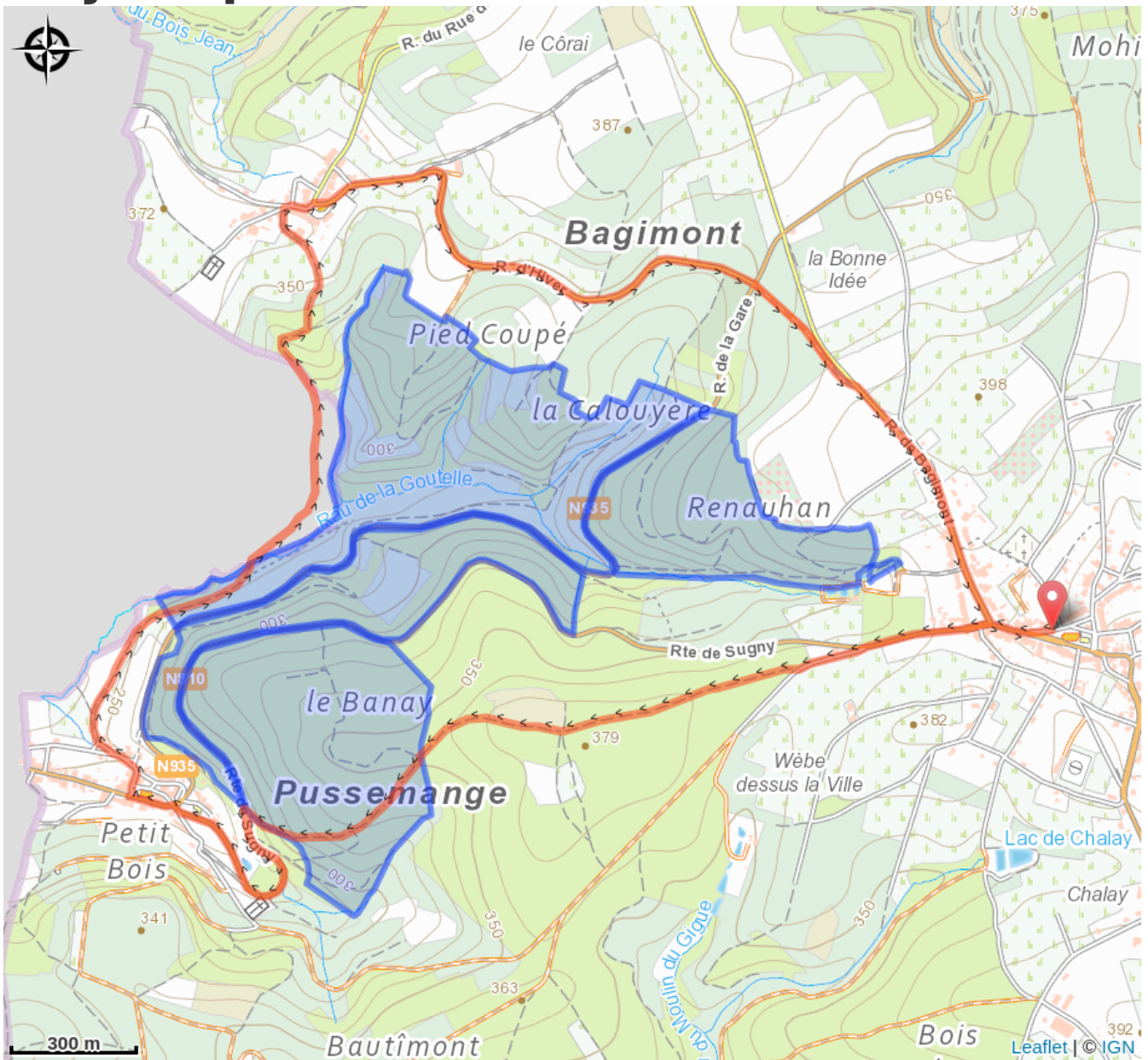
Altimetric profile



Min elevation 244 m Max elevation 388 m

Quiet walk in the southernmost part of the municipality of Vresse-sur-Semois. Discover the remote villages of Bagimont and Pussemange on the border of France.

On your path...



All useful information

Environmental sensitive areas

Along your trek, you will go through sensitive areas related to the presence of a specific species or environment. In these areas, an appropriate behaviour allows to contribute to their preservation. For detailed information, specific forms are accessible for each area.

Vallée du Ruisseau de la Goutelle

Sensitivity period:

Contact:

[Biodiversité Wallonie](#)

