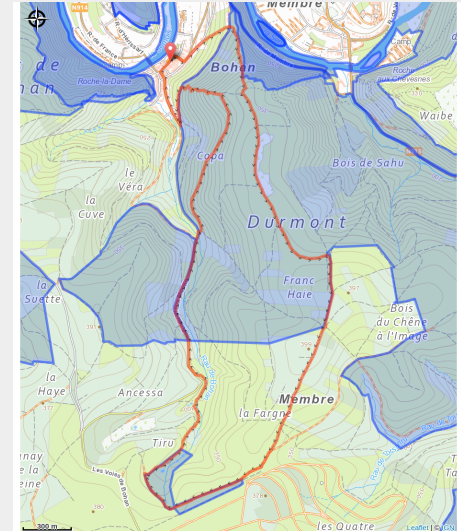


TIRU



(MTPBA)

Useful information

Practice : On foot

Duration : 3 h

Length : 8.6 km

Trek ascent : 349 m

Difficulty : Medium

Type : Loop

Trek

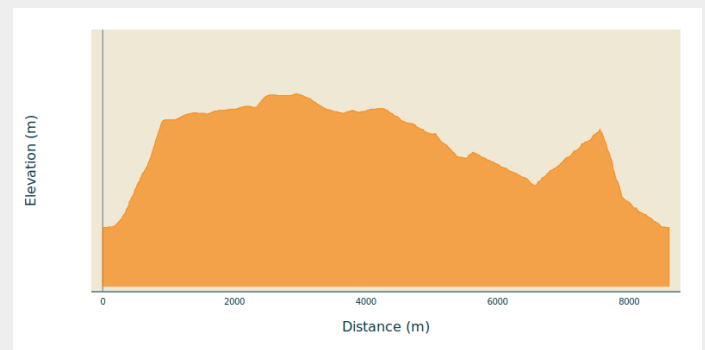
Departure : 5550 - Bohan

Arrival : 5550 - Bohan

Markings : ◆ Diamond - Green

Cities : 1. Vresse-sur-Semois

Altimetric profile

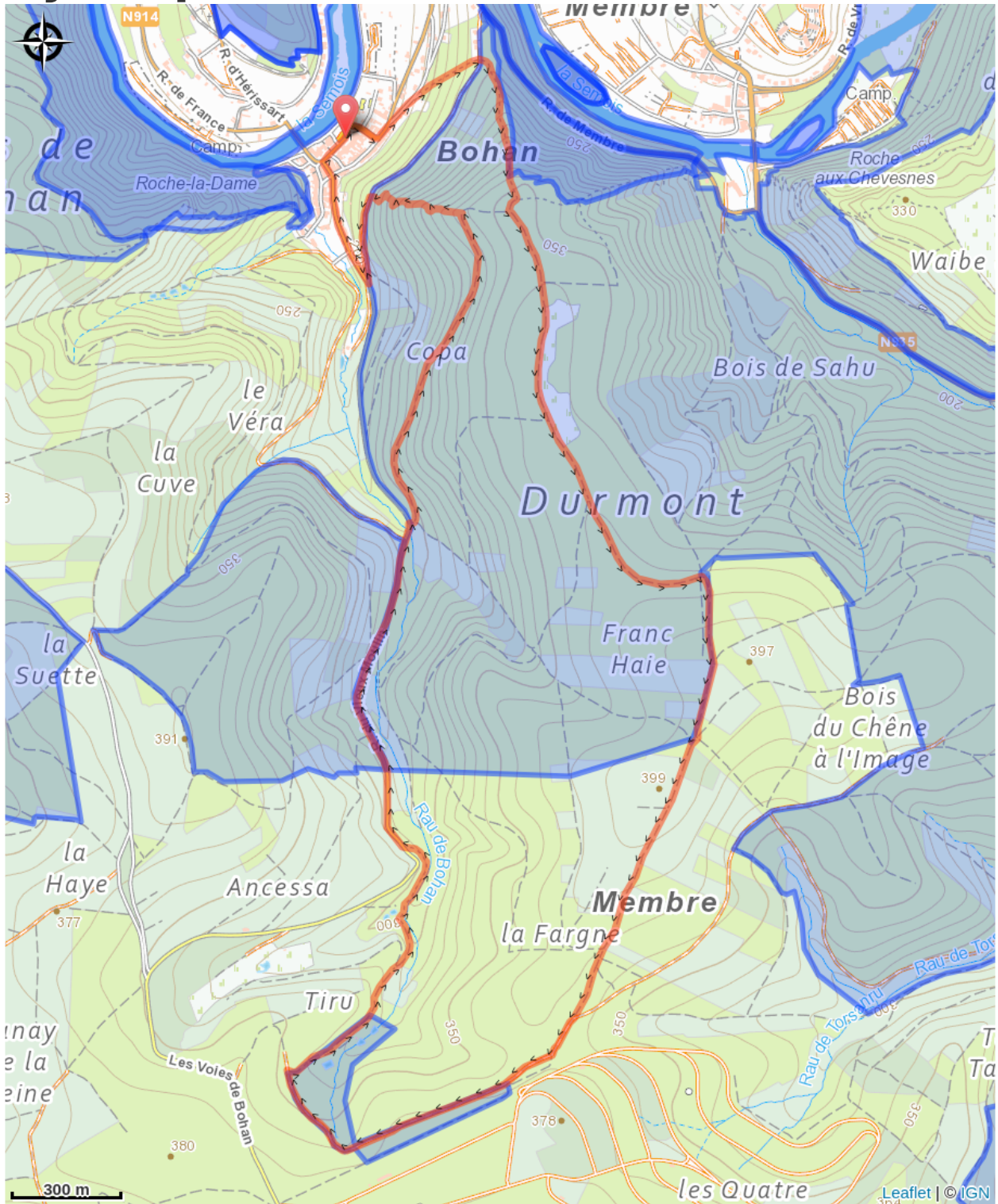


Min elevation 171 m Max elevation 397 m

A steep climb at the start of the hike leads you to the viewpoint "les 8 Semois". After this effort the hike continues along wide forest roads and passes by the Chêne à l'Image : a remarkable oak tree.

Part of the way back is along the road connecting Bohan to Sugny. Back through the forest and after a final climb, a narrow path descends steeply back to the village.

On your path...



All useful information

Environmental sensitive areas

Along your trek, you will go through sensitive areas related to the presence of a specific species or environment. In these areas, an appropriate behaviour allows to contribute to their preservation. For detailed information, specific forms are accessible for each area.

Vallée de la Semois en aval d'Alle

Sensitivity period:

Contact:

[Biodiversité Wallonie](#)



Bohan-Membre (Vresse-sur-Semois)

Sensitivity period:

Contact:

[Biodiversité Wallonie](#)

Site of high biological interest

Ile de Membre (Vresse-sur-Semois)

Sensitivity period:

Contact:

[Biodiversité Wallonie](#)

Site of high biological interest

Membre (Ile de)

Sensitivity period:

Contact:

[Biodiversité Wallonie](#)

Wetland of biological interest

Source du Ruisseau de Bohan (Vresse-sur-Semois)

Sensitivity period:

Contact:

[Biodiversité Wallonie](#)

Site of high biological interest