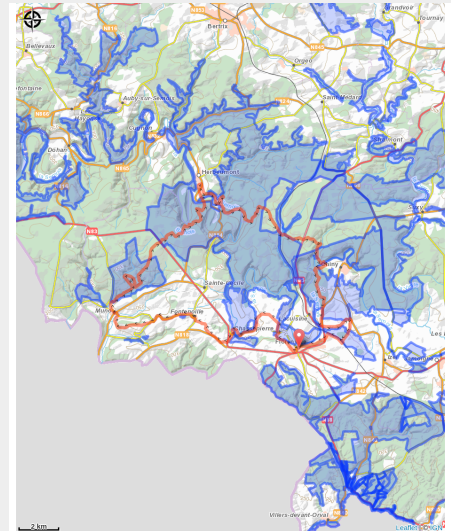
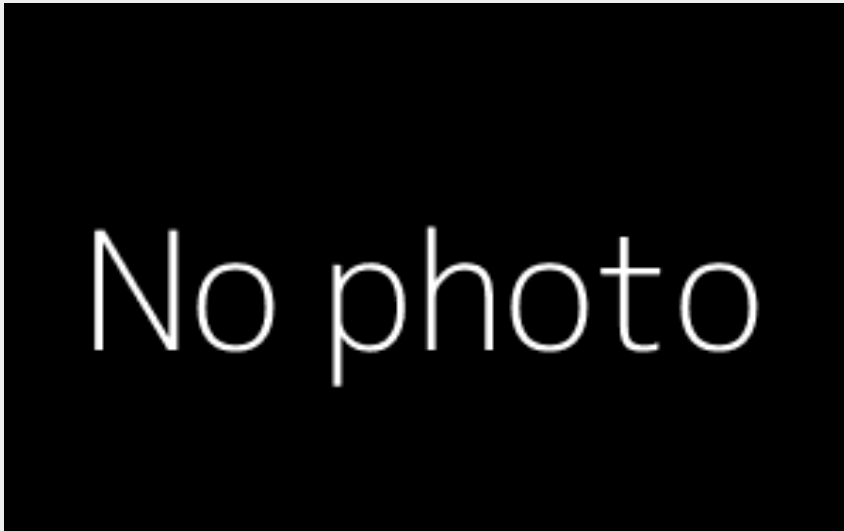


Calm Gaume and the breathtaking Ardennes



Useful information

Practice : On foot

Duration : 3 days

Length : 49.6 km

Trek ascent : 1088 m

Difficulty : Difficult

Type : Loop

Trek

Departure : 6820 - Florenville

Arrival : 6820 - Florenville

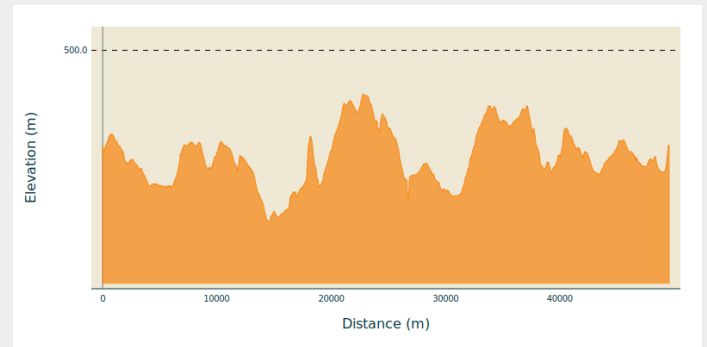
Markings : ■ N1 - Yellow

Cities : 1. Florenville

2. Herbeumont

3. Chiny

Altimetric profile

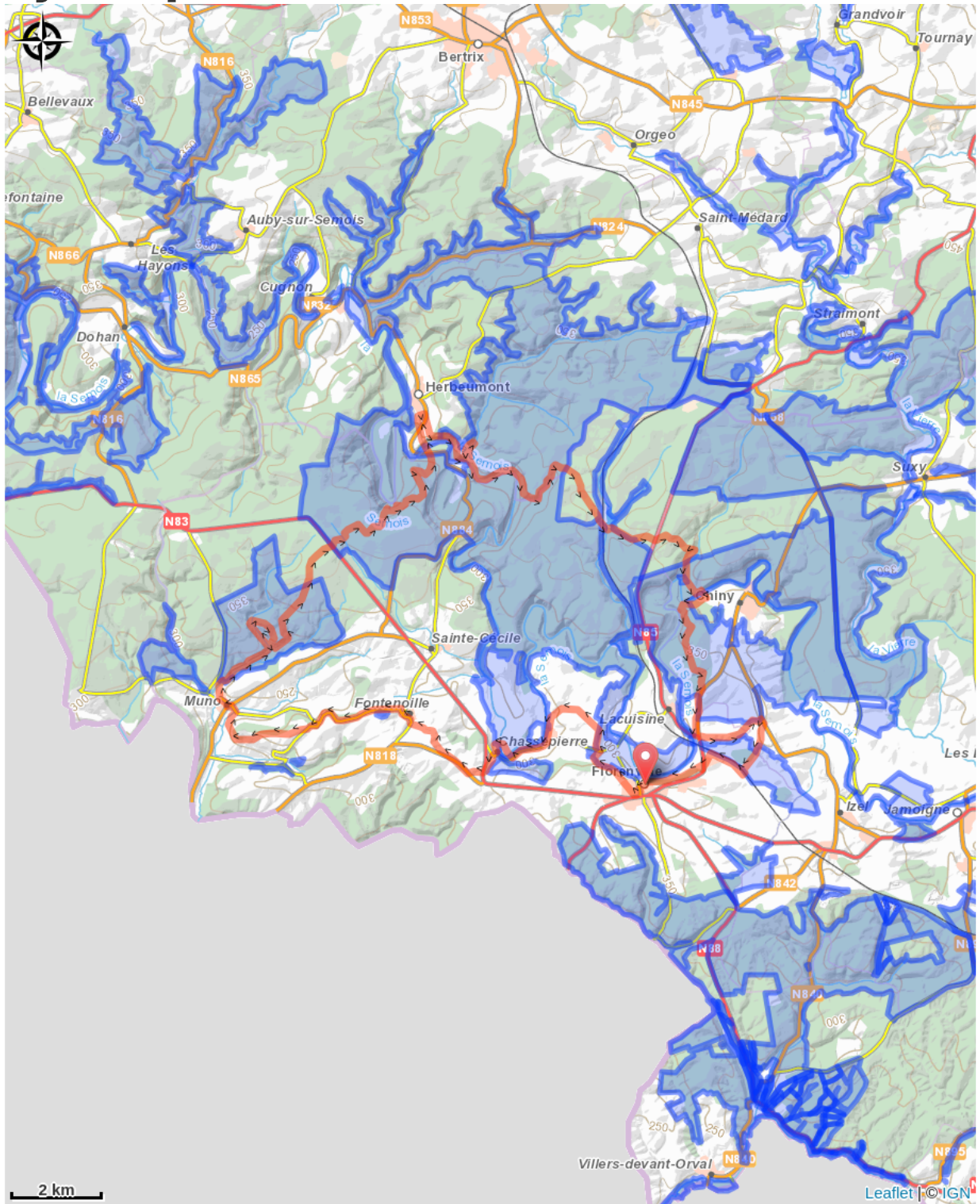


Min elevation 226 m Max elevation 430 m

This walk is part of one of 7 loops on the walking itinerary for the Gaume part of Lorraine! Take your backpack, camera in hand, and take to the road to capture some of the region's most beautiful images. A guaranteed change of scenery!

This 49km walk gives you the chance to explore some exceptional sites in the Ardennes such as the Roche à l'Appel, the Roches du Moulin, the medieval ruins of Herbeumont castle, Les Épioux and the large Chiny forest. Further south, in Gaume, you will be impressed by the remarkable Florenville viewpoint, the village of Chassepierre, a real paradise for painters, and the traditional Gaume houses in Laiche and Fontenoille.

On your path...



All useful information

Environmental sensitive areas

Along your trek, you will go through sensitive areas related to the presence of a specific species or environment. In these areas, an appropriate behaviour allows to contribute to their preservation. For detailed information, specific forms are accessible for each area.

Bassin de la Semois de Jamoigne à Chiny

Sensitivity period:

Contact:

[Biodiversité Wallonie](#)



Forêts de Muno

Sensitivity period:

Contact:

[Biodiversité Wallonie](#)



Bassin de la Semois de Florenville à Auby

Sensitivity period:

Contact:

[Biodiversité Wallonie](#)



Château d'Herbeumont (Herbeumont)

Sensitivity period:

Contact:

[Biodiversité Wallonie](#)

Site of high biological interest

Méandre du Tombeau du Chevalier (Herbeumont)

Sensitivity period:

Contact:

[Biodiversité Wallonie](#)

Site of high biological interest

Noüe de Florenville (Florenville)

Sensitivity period:

Contact:

[Biodiversité Wallonie](#)

Site of high biological interest

Chateau d'Herbeumont

Sensitivity period:

Contact:

[Biodiversité Wallonie](#)

State-owned nature reserve

Etangs des Epioux

Sensitivity period:

Contact:

[Biodiversité Wallonie](#)

State-owned nature reserve

Bois du Chauffour (Florenville)

Sensitivity period:

Contact:

[Biodiversité Wallonie](#)

Site of high biological interest

Carrière de Lambermont [nord] (Florenville)

Sensitivity period:

Contact:

[Biodiversité Wallonie](#)

Site of high biological interest

Carrière du Panorama (Florenville)

Sensitivity period:

Contact:

[Biodiversité Wallonie](#)

Site of high biological interest

Forêt alluviale de Pinco (Florenville)

Sensitivity period:

Contact:

[Biodiversité Wallonie](#)

Site of high biological interest

Côte du point de vue de Chassepierre (Florenville)

Sensitivity period:

Contact:

[Biodiversité Wallonie](#)

Site of high biological interest

Étang du Fond de Chassepierre (Florenville)

Sensitivity period:

Contact:

[Biodiversité Wallonie](#)

Site of high biological interest

Etangs de Conques (Florenville)

Sensitivity period:

Contact:

[Biodiversité Wallonie](#)

Site of high biological interest

Forêt alluviale du Bois de Conques (Florenville)

Sensitivity period:

Contact:

[Biodiversité Wallonie](#)

Site of high biological interest

Forêt alluviale du Breu (Florenville)

Sensitivity period:

Contact:

[Biodiversité Wallonie](#)

Site of high biological interest

Grand étang des Épioux (Florenville)

Sensitivity period:

Contact:

[Biodiversité Wallonie](#)

Site of high biological interest

Iles de Laiche (Florenville)

Sensitivity period:

Contact:

[Biodiversité Wallonie](#)

Site of high biological interest

La Ficherulle (Florenville)

Sensitivity period:

Contact:

[Biodiversité Wallonie](#)

Site of high biological interest

La Roche à l'Appel (Florenville)

Sensitivity period:

Contact:

[Biodiversité Wallonie](#)

Site of high biological interest

La Semois à Laîche (Florenville)

Sensitivity period:

Contact:

[Biodiversité Wallonie](#)

Site of high biological interest

Le Caracoleu (Chiny; Florenville)

Sensitivity period:

Contact:

[Biodiversité Wallonie](#)

Site of high biological interest

Les Paquis (Florenville)

Sensitivity period:

Contact:

[Biodiversité Wallonie](#)

Site of high biological interest

Cote sous le Point de Vue de Chassepierre

Sensitivity period:

Contact:

[Biodiversité Wallonie](#)

State-owned nature reserve

La Ficherulle

Sensitivity period:

Contact:

[Biodiversité Wallonie](#)

State-owned nature reserve

Roche a l'Appel

Sensitivity period:

Contact:

[Biodiversité Wallonie](#)

State-owned nature reserve