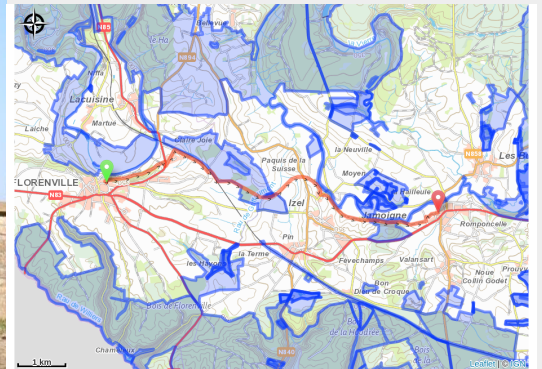


# The Servais route between Ardennes and Gaume



(MT Gaume / LL)



## Useful information

Practice : Bicycle tourer

Length : 9.0 km

Trek ascent : 92 m

Difficulty : Easy

Type : Linear

# Trek

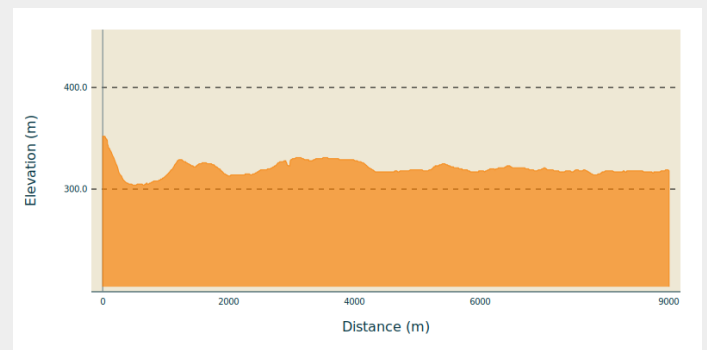
**Departure** : 1 Esplanade du Panorama,  
6820 - Florenville

**Arrival** : 1 Esplanade du Panorama, 6820  
- Florenville

**Markings** : No signage

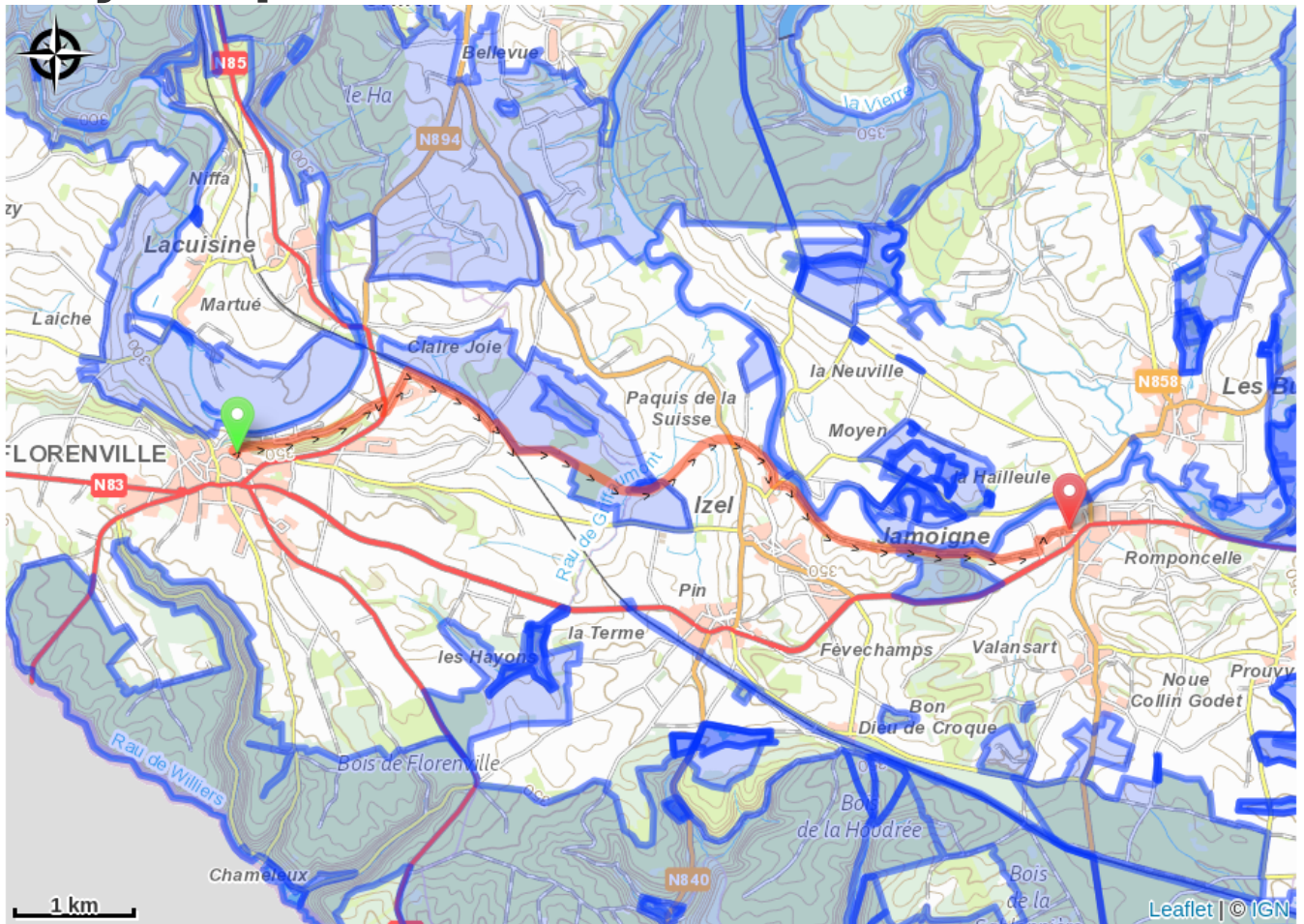
**Cities** : 1. Florenville  
2. Chiny

## Altimetric profile



Min elevation 304 m Max elevation 352 m

# On your path...



# All useful information

# Environmental sensitive areas

Along your trek, you will go through sensitive areas related to the presence of a specific species or environment. In these areas, an appropriate behaviour allows to contribute to their preservation. For detailed information, specific forms are accessible for each area.

## **Bassin de la Semois de Jamoigne à Chiny**

Sensitivity period:

Contact:

[Biodiversité Wallonie](#)



### **Bassin de la Semois entre Tintigny et Jamoigne**

Sensitivity period:

Contact:

[Biodiversité Wallonie](#)



### **Bassin de la Semois de Florenville à Auby**

Sensitivity period:

Contact:

[Biodiversité Wallonie](#)



### **Noie de Florenville (Florenville)**

Sensitivity period:

Contact:

[Biodiversité Wallonie](#)

Site of high biological interest

### **Le Caracoleu (Chiny; Florenville)**

Sensitivity period:

Contact:

[Biodiversité Wallonie](#)

Site of high biological interest

### **Wiaisai - Ruisseau de Griffaumont à Izel (Chiny; Florenville)**

Sensitivity period:

Contact:

[Biodiversité Wallonie](#)

Site of high biological interest

### **Wiaisai**

Sensitivity period:

Contact:

[Biodiversité Wallonie](#)

State-owned nature reserve

### **Grifaumont (Chiny)**

Sensitivity period:

Contact:

[Biodiversité Wallonie](#)

Site of high biological interest

### **Les Aisances de Moyen (Chiny)**

Sensitivity period:

Contact:

[Biodiversité Wallonie](#)

Site of high biological interest

### **Aisances de Moyen**

Sensitivity period:

Contact:

[Biodiversité Wallonie](#)

State-owned nature reserve