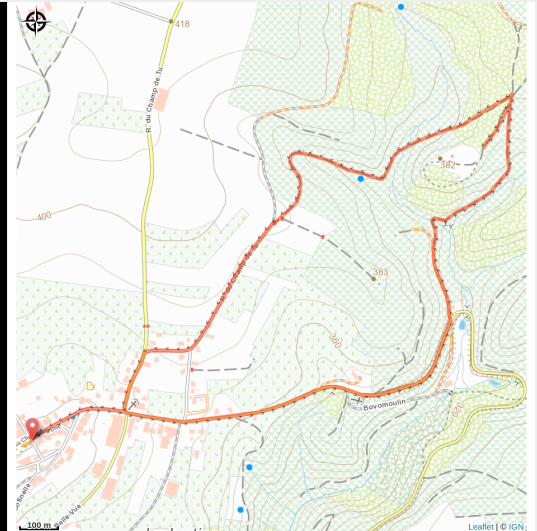


Promenade du Château-le-Duc



Useful information

Practice : On foot

Duration : 1 h 15

Length : 4.3 km

Trek ascent : 121 m

Difficulty : Easy

Type : Loop

Trek

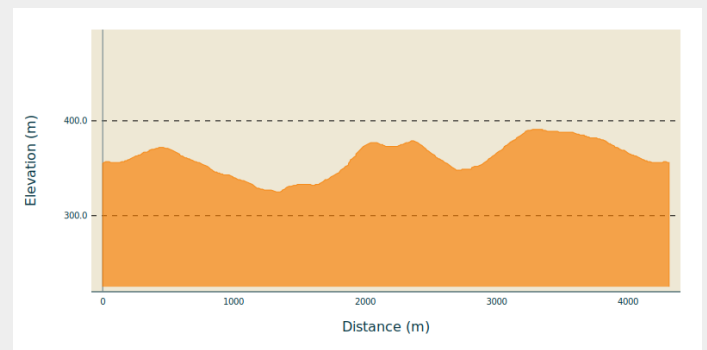
Departure : 6833 - Ucimont

Arrival : 6833 - Ucimont

Markings : ■ Horizontal rectangle - red

Cities : 1. Bouillon

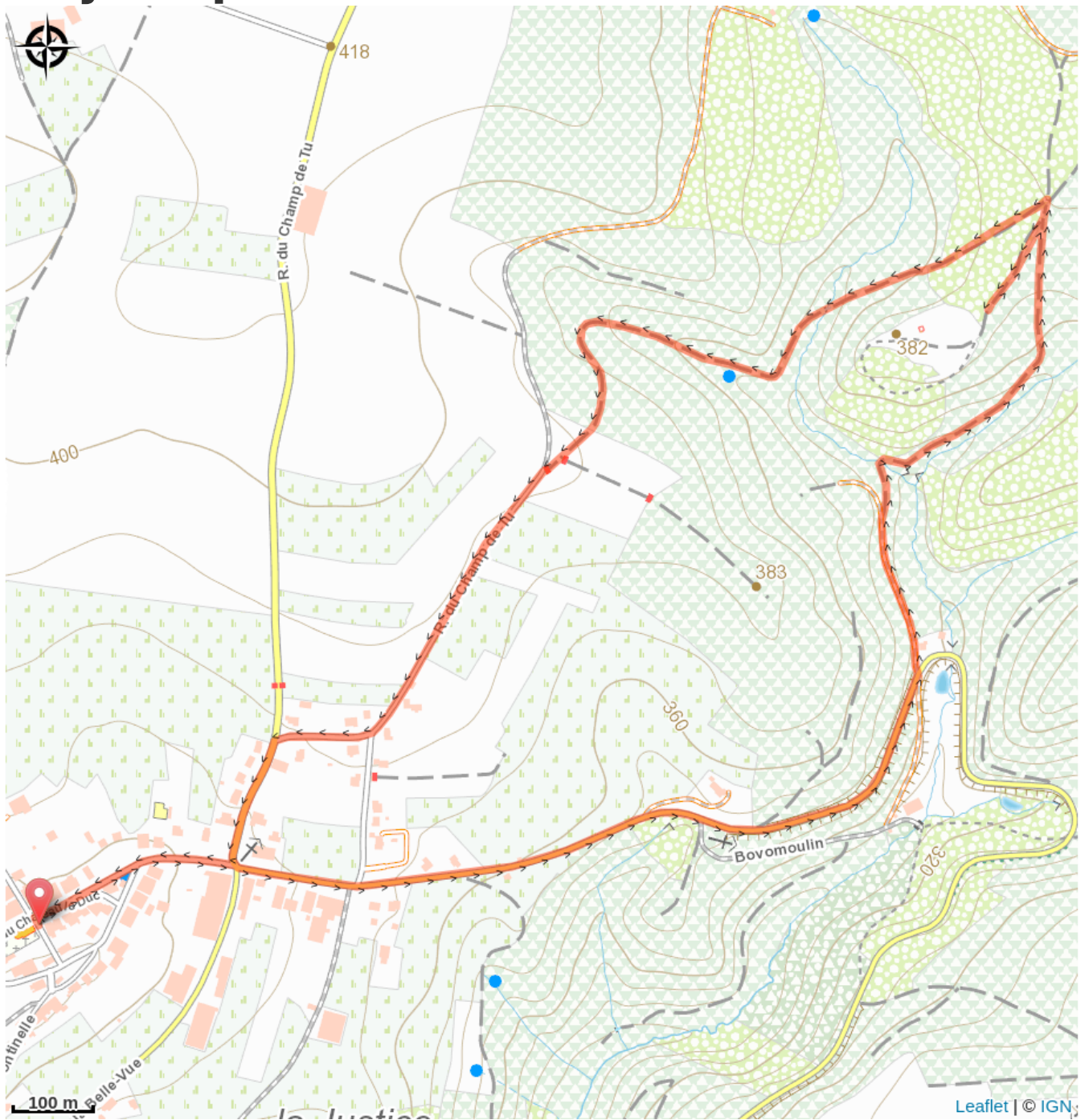
Altimetric profile



Min elevation 325 m Max elevation 391 m

Historical walk to discover the old traditions through the small museums of Ucimont. After a short climb in the forest, high up and near the stream, you have earned the beautiful discovery of the impressive site of Château le Duc.

On your path...



All useful information

Environmental sensitive areas

Along your trek, you will go through sensitive areas related to the presence of a specific species or environment. In these areas, an appropriate behaviour allows to contribute to their preservation. For detailed information, specific forms are accessible for each area.

Château le Duc (Bouillon)

Sensitivity period:

Contact:

[Biodiversité Wallonie](#)

Site of high biological interest