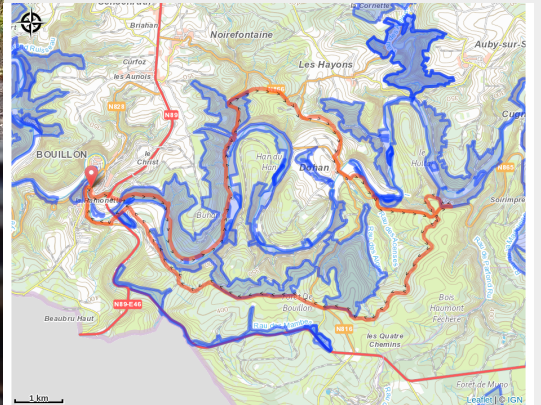


# MTB "Promenade de Dohan"



(MTBA)



## Useful information

Practice : Mountain bike

Duration : 2 h 30

Length : 28.1 km

Trek ascent : 631 m

Difficulty : Medium

Type : Loop

# Trek

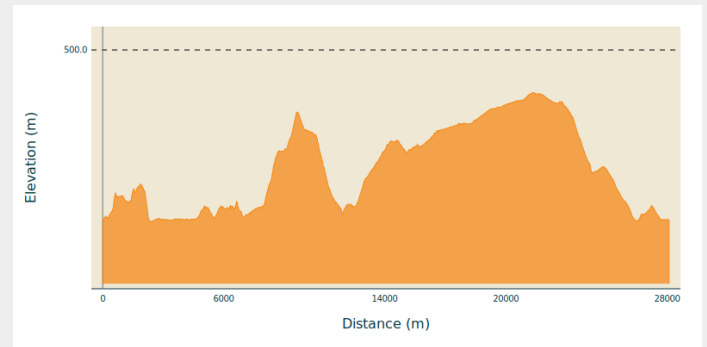
**Departure** : 6830 - Bouillon

**Arrival** : 6830 - Bouillon

**Markings** : 🌲 N3 - Green

**Cities** : 1. Bouillon

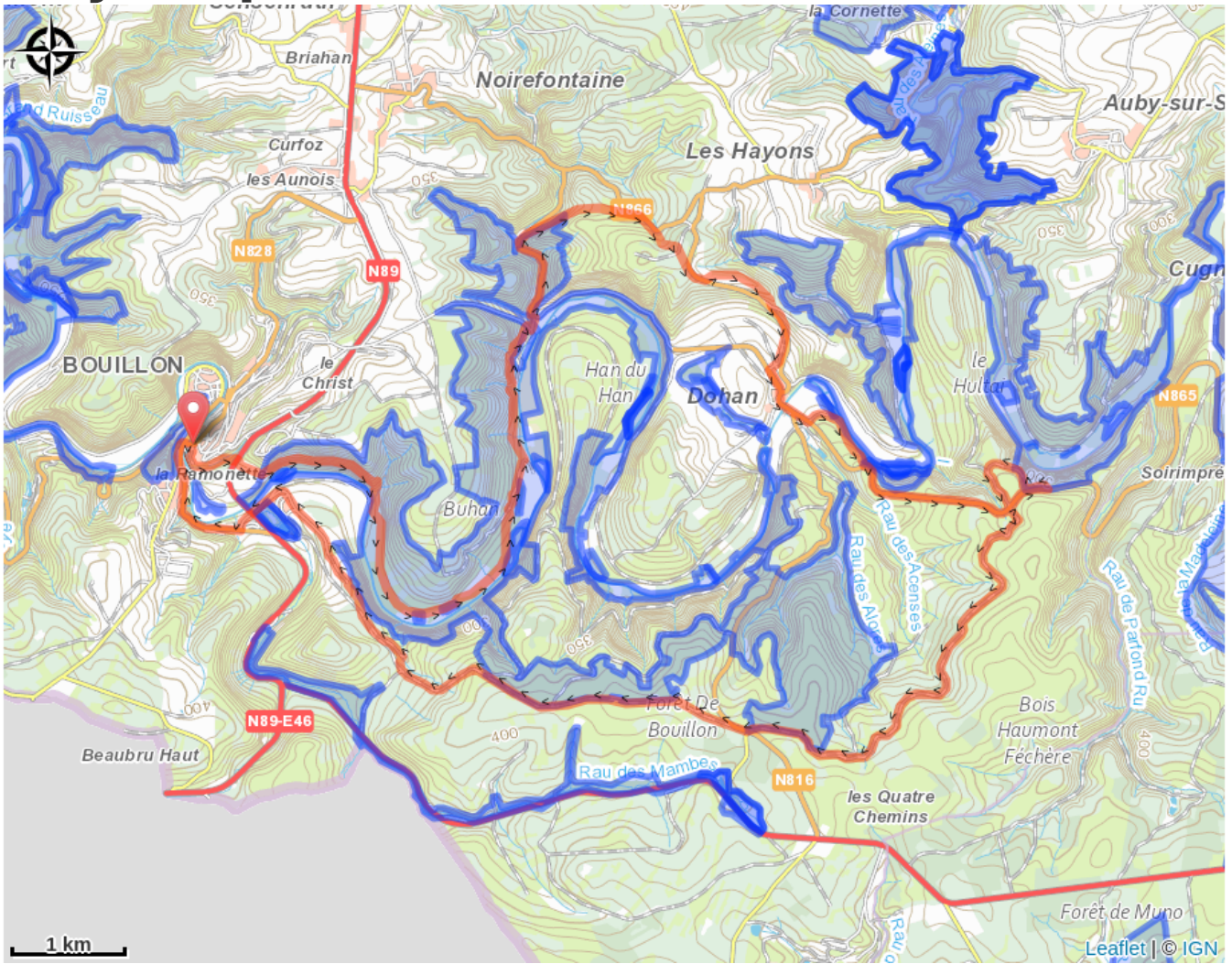
## Altimetric profile



Min elevation 217 m Max elevation 430 m

A family mountain bike ride, for older children who are already quite sporty given the 700 m gradient. On the whole, the trails are fairly wide, with gravel and dirt. 2 short technical sections. This route takes in a large part of the legendary Grand Raid Godefroy route, but in the opposite direction. Discover the magnificent views of the Moyenne Semois and the authentic village of Dohan. Immerse yourself in the heart of nature, crossed by the Semois.

# On your path...



# All useful information

# Environmental sensitive areas

Along your trek, you will go through sensitive areas related to the presence of a specific species or environment. In these areas, an appropriate behaviour allows to contribute to their preservation. For detailed information, specific forms are accessible for each area.

## **Bassin de la Semois du Maka à Bouillon**

Sensitivity period:

Contact:

[Biodiversité Wallonie](#)



## **Bassin de la Semois de Florenville à Auby**

Sensitivity period:

Contact:

[Biodiversité Wallonie](#)



## **Aulnaie du Fainire (Bouillon)**

Sensitivity period:

Contact:

[Biodiversité Wallonie](#)

Site of high biological interest

## **Château-fort de Bouillon (Bouillon)**

Sensitivity period:

Contact:

[Biodiversité Wallonie](#)

Site of high biological interest

## **Forêt alluviale du Champ Touaux (Bouillon)**

Sensitivity period:

Contact:

[Biodiversité Wallonie](#)

Site of high biological interest

## **Ile Chevray et Roche de la Dampirée (Bouillon)**

Sensitivity period:

Contact:

[Biodiversité Wallonie](#)

Site of high biological interest

## **Ile de Locailou (Bouillon)**

Sensitivity period:

Contact:

[Biodiversité Wallonie](#)

Site of high biological interest

## **Iles de Grimouti (Bouillon)**

Sensitivity period:

Contact:

[Biodiversité Wallonie](#)

Site of high biological interest

## **Iles Stassart (Bouillon)**

Sensitivity period:

Contact:

[Biodiversité Wallonie](#)

Site of high biological interest

## **La Platinerie (Bouillon)**

Sensitivity period:

Contact:

[Biodiversité Wallonie](#)

Site of high biological interest

### **Noüe de Morsehan (Bouillon)**

Sensitivity period:

Contact:

[Biodiversité Wallonie](#)

Site of high biological interest

### **Pré Lamquin (Bouillon)**

Sensitivity period:

Contact:

[Biodiversité Wallonie](#)

Site of high biological interest

### **Ruisseau du Pré Magin (Bouillon)**

Sensitivity period:

Contact:

[Biodiversité Wallonie](#)

Site of high biological interest

### **Basse Semois Orientale**

Sensitivity period:

Contact:

[Biodiversité Wallonie](#)

Accredited nature reserve

### **Platinerie (La)**

Sensitivity period:

Contact:

[Biodiversité Wallonie](#)

State-owned nature reserve

## **Bras-mort de la Saurpître (Bertrix)**

Sensitivity period:

Contact:

[Biodiversité Wallonie](#)

Site of high biological interest

## **Noue de la Saurpître (Bertrix)**

Sensitivity period:

Contact:

[Biodiversité Wallonie](#)

Site of high biological interest