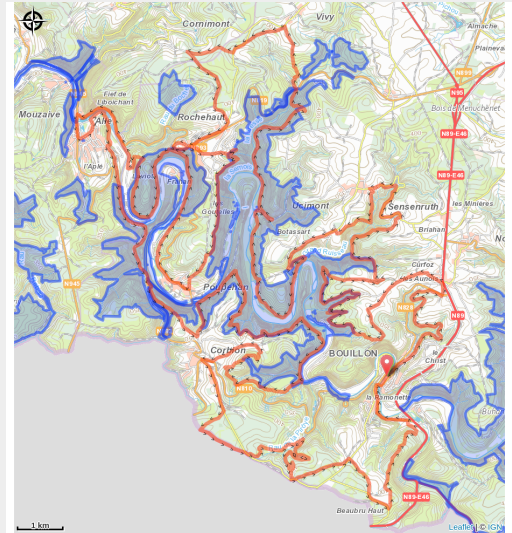


MTB Grand Raid Godefroid 90 km



(MTBA)



Useful information

Practice : Mountain bike

Duration : 8 h

Length : 91.8 km

Trek ascent : 2733 m

Difficulty : Difficult

Type : Loop

Trek

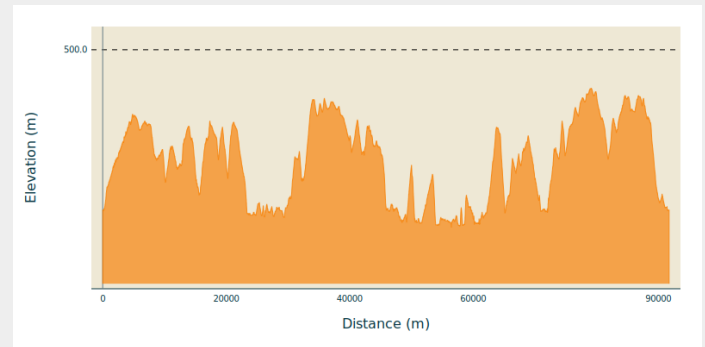
Departure : 12 Quai des Saulx, 6830 - Bouillon

Arrival : 12 Quai des Saulx, 6830 - Bouillon

Markings : 🚩 N3 - Red

Cities : 1. Bouillon
2. Vresse-sur-Semois

Altimetric profile



Min elevation 187 m Max elevation 432 m

Mythical permanent mountain bike course of the Grand Raid Godefroid.

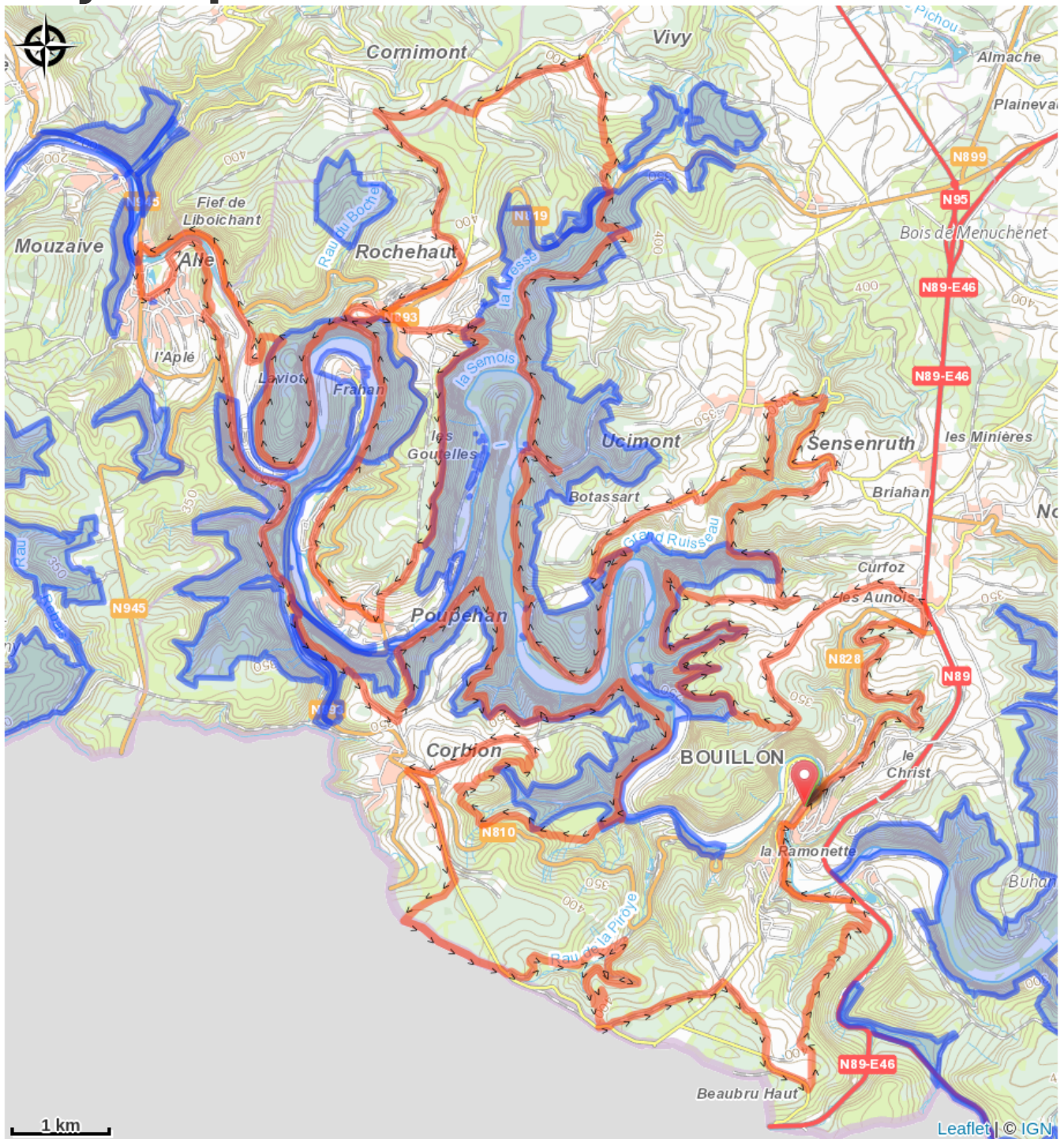
The 90 km course is designed for mountain bike experts.

A magnificent difference in altitude of 2,540 m, technical, gravel or dirt trails, and magnificent viewpoints will delight the most experienced sportsmen.

Passing viewpoints such as the Belvédère (Bouillon), the Tombeau du Géant (Botassart), the panorama of Rochehaut sur Frahan, the Chaire à Prêche (Poupehan), the Ecaillère (Corbion), the Epine (Corbion), the Pic du Diable (Corbion).

It is possible to shorten this route, paying attention to the possibility of crossing the Semois.

On your path...



All useful information

Environmental sensitive areas

Along your trek, you will go through sensitive areas related to the presence of a specific species or environment. In these areas, an appropriate behaviour allows to contribute to their preservation. For detailed information, specific forms are accessible for each area.

Vallée de la Semois en aval d'Alle

Sensitivity period:

Contact:

[Biodiversité Wallonie](#)



Bassin de la Semois du Maka à Bouillon

Sensitivity period:

Contact:

[Biodiversité Wallonie](#)



Ardoisière de Laplet [siège oriental] (Vresse-sur-Semois)

Sensitivity period:

Contact:

[Biodiversité Wallonie](#)

Site of high biological interest

Bassin de la Semois de Bouillon à Alle

Sensitivity period:

Contact:

[Biodiversité Wallonie](#)



Ile de Alle (Vresse-sur-Semois)

Sensitivity period:

Contact:

[Biodiversité Wallonie](#)

Site of high biological interest

Iles de Mouzaive (Vresse-sur-Semois)

Sensitivity period:

Contact:

[Biodiversité Wallonie](#)

Site of high biological interest

Laplet (Ardoisière de) a Alle

Sensitivity period:

Contact:

[Biodiversité Wallonie](#)

Underground cavities of scientific interest

Ruisseau de Gros Fays (Bièvre; Vresse-sur-Semois)

Sensitivity period:

Contact:

[Biodiversité Wallonie](#)

Site of high biological interest

Vallée de la Semois de Poupehan à Alle (Bouillon; Vresse-sur-Semois)

Sensitivity period:

Contact:

[Biodiversité Wallonie](#)

Site of high biological interest

Basse Semois

Sensitivity period:

Contact:

[Biodiversité Wallonie](#)

Accredited nature reserve

Vresse-sur- Semois

Sensitivity period:

Contact:

[Biodiversité Wallonie](#)

Forest reserve

Galeries souterraines de l'ardoisière de Laviot (Bouillon)

Sensitivity period:

Contact:

[Biodiversité Wallonie](#)

Site of high biological interest

Ardoisière de Gérardfosse (Bouillon)

Sensitivity period:

Contact:

[Biodiversité Wallonie](#)

Site of high biological interest

Château-fort de Bouillon (Bouillon)

Sensitivity period:

Contact:

[Biodiversité Wallonie](#)

Site of high biological interest

Château le Duc (Bouillon)

Sensitivity period:

Contact:

[Biodiversité Wallonie](#)

Site of high biological interest

Forêt alluviale des Wintchîres (Bouillon)

Sensitivity period:

Contact:

[Biodiversité Wallonie](#)

Site of high biological interest

Hottée du Diable (Bouillon)

Sensitivity period:

Contact:

[Biodiversité Wallonie](#)

Site of high biological interest

Ile des Beaux Chênais (Bouillon)

Sensitivity period:

Contact:

[Biodiversité Wallonie](#)

Site of high biological interest

Ile du Ban de Laviot (Bouillon)

Sensitivity period:

Contact:

[Biodiversité Wallonie](#)

Site of high biological interest

Ile du camping du Vieux Moulin (Bouillon)

Sensitivity period:

Contact:

[Biodiversité Wallonie](#)

Site of high biological interest

Ile du Pic du Diable (Bouillon)

Sensitivity period:

Contact:

[Biodiversité Wallonie](#)

Site of high biological interest

La Grande Prairie (Bouillon)

Sensitivity period:

Contact:

[Biodiversité Wallonie](#)

Site of high biological interest

La Platinerie (Bouillon)

Sensitivity period:

Contact:

[Biodiversité Wallonie](#)

Site of high biological interest

Le Tombeau du Géant (Bouillon)

Sensitivity period:

Contact:

[Biodiversité Wallonie](#)

Site of high biological interest

Noüe de Morsehan (Bouillon)

Sensitivity period:

Contact:

[Biodiversité Wallonie](#)

Site of high biological interest

Source du Ruisseau du Bochet (Bouillon)

Sensitivity period:

Contact:

[Biodiversité Wallonie](#)

Site of high biological interest

Gerardfosse (Ardoisiere)

Sensitivity period:

Contact:

[Biodiversité Wallonie](#)

State-owned nature reserve

Laviot (Ardoisiere de)

Sensitivity period:

Contact:

[Biodiversité Wallonie](#)

State-owned nature reserve

Platinerie (La)

Sensitivity period:

Contact:

[Biodiversité Wallonie](#)

State-owned nature reserve