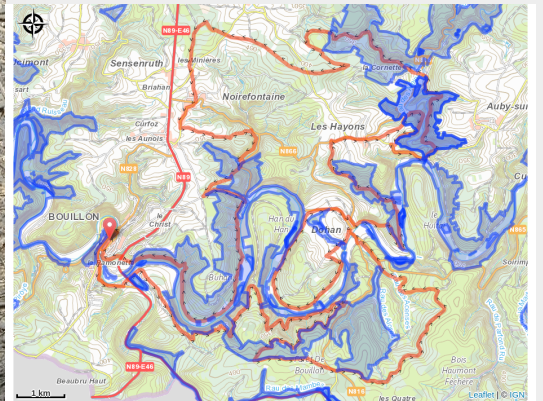


# MTB Grand Raid Godefroid 70 km



(MTBA)



## Useful information

Practice : Mountain bike

Duration : 6 h

Length : 64.0 km

Trek ascent : 1591 m

Difficulty : Difficult

Type : Loop

# Trek

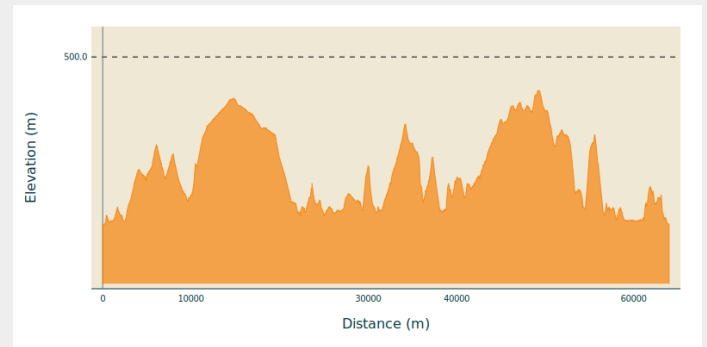
**Departure** : 12 Quai des Saulx, 6830 - Bouillon

**Arrival** : 12 Quai des Saulx, 6830 - Bouillon

**Markings** : 🚩 N3 - Red

**Cities** : 1. Bouillon  
2. Bertrix  
3. Paliseul

## Altimetric profile



Min elevation 215 m Max elevation 443 m

Mythical permanent mountain bike course of the Grand Raid Godefroid.

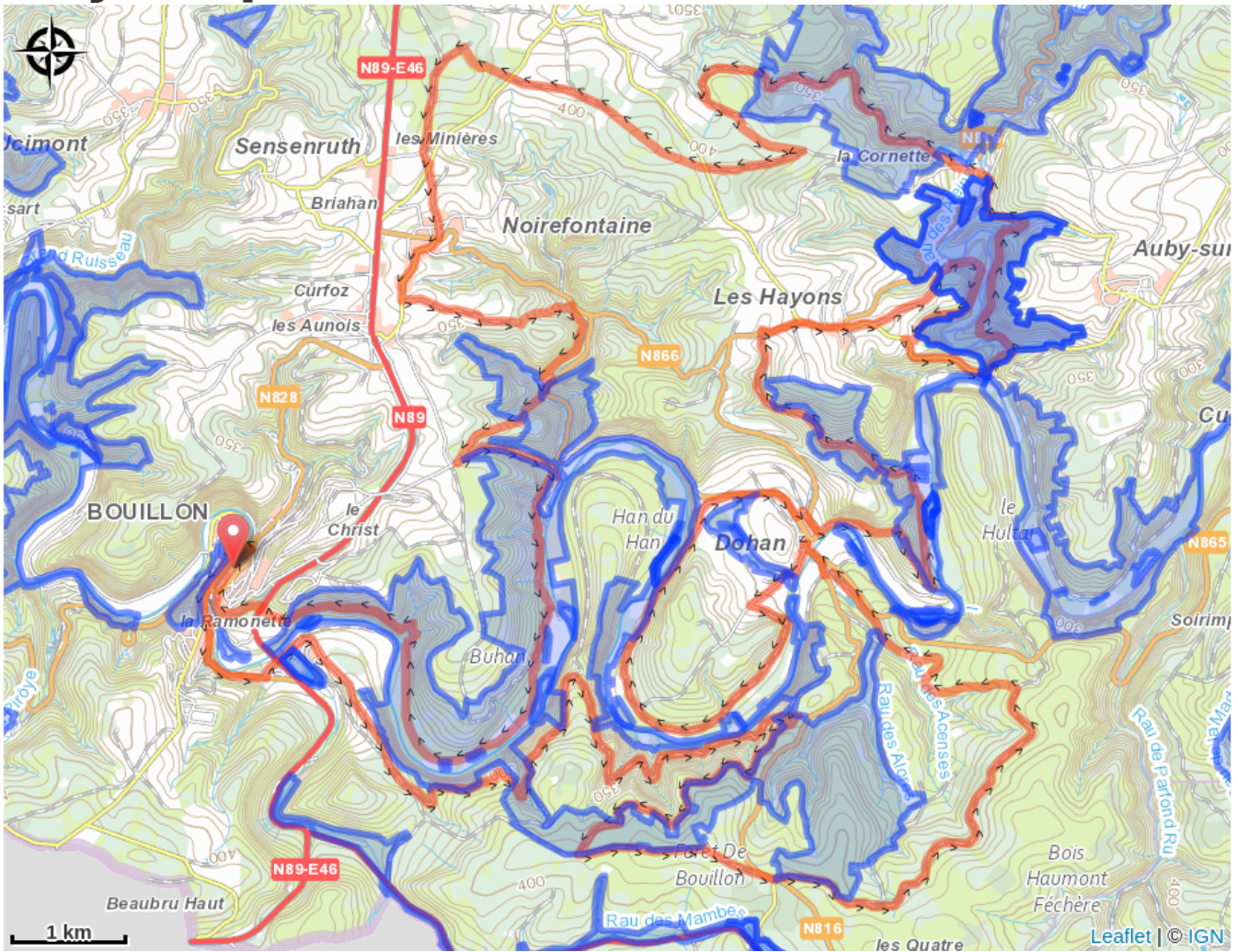
The 70 km route is shared with the 40 km Grand Raid route. This adds a section to the villages of Les Hayons, La Cornette and Noirefontaine before reaching Bouillon.

In general, the paths are fairly wide, stony and earthy. Few technical sections.

There are a number of viewpoints, such as the Charlier viewpoint (Bouillon), the Rocher des Clappes (Dohan), the Mont de Zatrou (Dohan), La Roche à Colas (Les Hayons).

Translated with [www.DeepL.com/Translator](http://www.DeepL.com/Translator) (free version)

# On your path...



# All useful information

# Environmental sensitive areas

Along your trek, you will go through sensitive areas related to the presence of a specific species or environment. In these areas, an appropriate behaviour allows to contribute to their preservation. For detailed information, specific forms are accessible for each area.

## **Bassin de la Semois du Maka à Bouillon**

Sensitivity period:

Contact:

[Biodiversité Wallonie](#)



### **Vallée du Ruisseau des Aleines**

Sensitivity period:

Contact:

[Biodiversité Wallonie](#)



### **Bassin de la Semois de Florenville à Auby**

Sensitivity period:

Contact:

[Biodiversité Wallonie](#)



### **Anciennes ardoisières de la Côte de Croc (Paliseul)**

Sensitivity period:

Contact:

[Biodiversité Wallonie](#)

Site of high biological interest

## **Forêt alluviale du Pré des Moines (Bouillon)**

Sensitivity period:

Contact:

[Biodiversité Wallonie](#)

Site of high biological interest

## **Anciennes ardoisières de la Cote de Croc a Paliseul**

Sensitivity period:

Contact:

[Biodiversité Wallonie](#)

Underground cavities of scientific interest

### **Aulnaie du Fainire (Bouillon)**

Sensitivity period:

Contact:

[Biodiversité Wallonie](#)

Site of high biological interest

### **Château-fort de Bouillon (Bouillon)**

Sensitivity period:

Contact:

[Biodiversité Wallonie](#)

Site of high biological interest

### **Forêt alluviale du Champ Touaux (Bouillon)**

Sensitivity period:

Contact:

[Biodiversité Wallonie](#)

Site of high biological interest

### **Ile Chevray et Roche de la Dampirée (Bouillon)**

Sensitivity period:

Contact:

[Biodiversité Wallonie](#)

Site of high biological interest

### **Ile de Locaillou (Bouillon)**

Sensitivity period:

Contact:

[Biodiversité Wallonie](#)

Site of high biological interest

### **Iles de Grimouti (Bouillon)**

Sensitivity period:

Contact:

[Biodiversité Wallonie](#)

Site of high biological interest

### **Iles de la Bergerie (Bouillon)**

Sensitivity period:

Contact:

[Biodiversité Wallonie](#)

Site of high biological interest

### **Iles Stassart (Bouillon)**

Sensitivity period:

Contact:

[Biodiversité Wallonie](#)

Site of high biological interest

### **La Platinerie (Bouillon)**

Sensitivity period:

Contact:

[Biodiversité Wallonie](#)

Site of high biological interest

### **Noue de l'île du Grand Buty (Bouillon)**

Sensitivity period:

Contact:

[Biodiversité Wallonie](#)

Site of high biological interest

**Noue de Morsehan (Bouillon)**

Sensitivity period:

Contact:

[Biodiversité Wallonie](#)

Site of high biological interest

**Pré Lamquin (Bouillon)**

Sensitivity period:

Contact:

[Biodiversité Wallonie](#)

Site of high biological interest

**Ruisseau du Pré Magin (Bouillon)**

Sensitivity period:

Contact:

[Biodiversité Wallonie](#)

Site of high biological interest

**Vallée du ruisseau des Aleines (Bertrix; Bouillon)**

Sensitivity period:

Contact:

[Biodiversité Wallonie](#)

Site of high biological interest

**Grand Buty (Noue de l'Île du)**

Sensitivity period:

Contact:

[Biodiversité Wallonie](#)

Wetland of biological interest

## **Basse Semois Orientale**

Sensitivity period:

Contact:

[Biodiversité Wallonie](#)

Accredited nature reserve

## **Lipire (Ile) ou Grande Ile de la Bergerie ou Lepire**

Sensitivity period:

Contact:

[Biodiversité Wallonie](#)

State-owned nature reserve

## **Platinerie (La)**

Sensitivity period:

Contact:

[Biodiversité Wallonie](#)

State-owned nature reserve