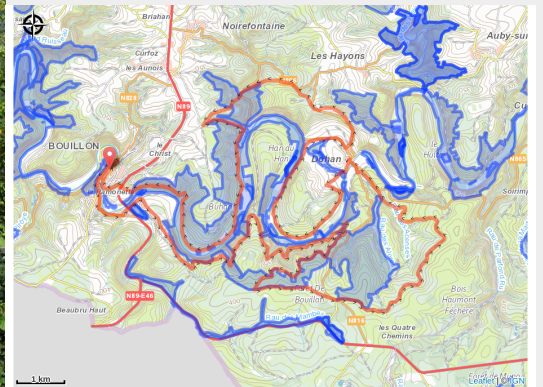


MTB du Grand Raid Godefroid 40 km



(Jadoul)



Useful information

Practice : Mountain bike

Duration : 3 h 30

Length : 41.9 km

Trek ascent : 1006 m

Difficulty : Medium

Type : Loop

Trek

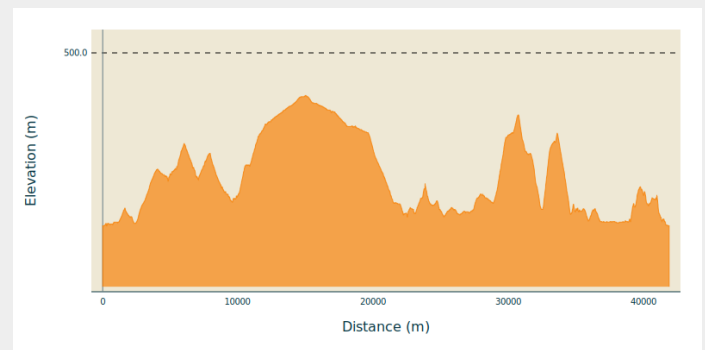
Departure : Quai des Saulx, 6830 - Bouillon

Arrival : Quai des Saulx, 6830 - Bouillon

Markings : 🚩 N3 - Red

Cities : 1. Bouillon

Altimetric profile



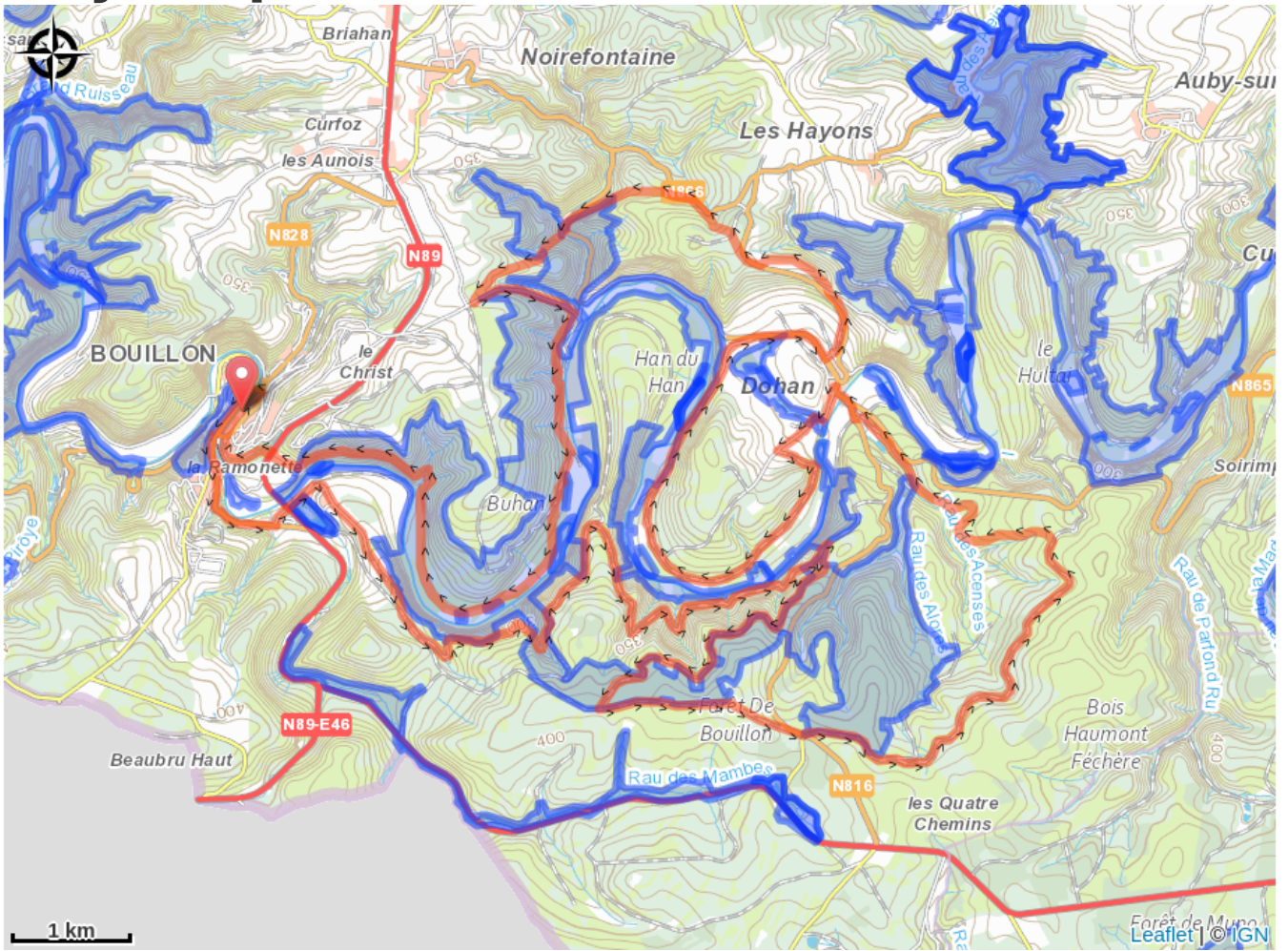
Min elevation 216 m Max elevation 430 m

Mythical permanent mountain bike route of the Grand Raid Godefroid.

On the whole, the paths are fairly wide, stony and earthy. Few technical sections.

Superb mixed forest, deciduous and coniferous, crossed by the Semois, whose route is skirted by the promenade between Dohan and Bouillon.

On your path...



All useful information

Environmental sensitive areas

Along your trek, you will go through sensitive areas related to the presence of a specific species or environment. In these areas, an appropriate behaviour allows to contribute to their preservation. For detailed information, specific forms are accessible for each area.

Bassin de la Semois du Maka à Bouillon

Sensitivity period:

Contact:

[Biodiversité Wallonie](#)



Forêt alluviale du Pré des Moines (Bouillon)

Sensitivity period:

Contact:

[Biodiversité Wallonie](#)

Site of high biological interest

Aulnaie du Fainire (Bouillon)

Sensitivity period:

Contact:

[Biodiversité Wallonie](#)

Site of high biological interest

Château-fort de Bouillon (Bouillon)

Sensitivity period:

Contact:

[Biodiversité Wallonie](#)

Site of high biological interest

Forêt alluviale du Champ Touaux (Bouillon)

Sensitivity period:

Contact:

[Biodiversité Wallonie](#)

Site of high biological interest

Ile Chevray et Roche de la Dampirée (Bouillon)

Sensitivity period:

Contact:

[Biodiversité Wallonie](#)

Site of high biological interest

Ile de Locailou (Bouillon)

Sensitivity period:

Contact:

[Biodiversité Wallonie](#)

Site of high biological interest

Iles de Grimouti (Bouillon)

Sensitivity period:

Contact:

[Biodiversité Wallonie](#)

Site of high biological interest

Iles Stassart (Bouillon)

Sensitivity period:

Contact:

[Biodiversité Wallonie](#)

Site of high biological interest

La Platinerie (Bouillon)

Sensitivity period:

Contact:

[Biodiversité Wallonie](#)

Site of high biological interest

Noe de l'île du Grand Buty (Bouillon)

Sensitivity period:

Contact:

[Biodiversité Wallonie](#)

Site of high biological interest

Noe de Morsehan (Bouillon)

Sensitivity period:

Contact:

[Biodiversité Wallonie](#)

Site of high biological interest

Pré Lamquin (Bouillon)

Sensitivity period:

Contact:

[Biodiversité Wallonie](#)

Site of high biological interest

Ruisseau du Pré Magin (Bouillon)

Sensitivity period:

Contact:

[Biodiversité Wallonie](#)

Site of high biological interest

Grand Buty (Noe de l'île du)

Sensitivity period:

Contact:

[Biodiversité Wallonie](#)

Wetland of biological interest

Basse Semois Orientale

Sensitivity period:

Contact:

[Biodiversité Wallonie](#)

Accredited nature reserve

Platinerie (La)

Sensitivity period:

Contact:

[Biodiversité Wallonie](#)

State-owned nature reserve