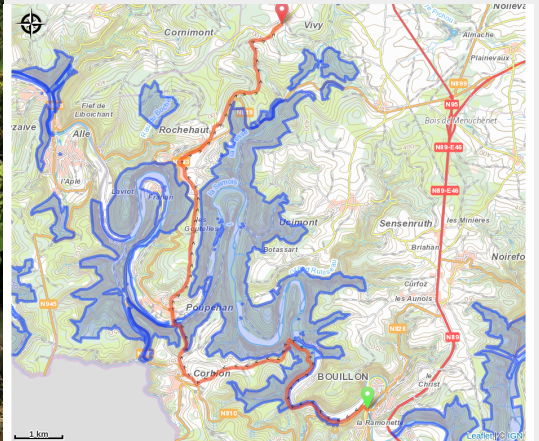


# Grande promenade Bouillon-Vivy 2 (rive Gauche)



(MTBA - C. François)



## Useful information

Practice : On foot

Duration : 7 h

Length : 16.8 km

Trek ascent : 626 m

Difficulty : Difficult

Type : Linear

# Trek

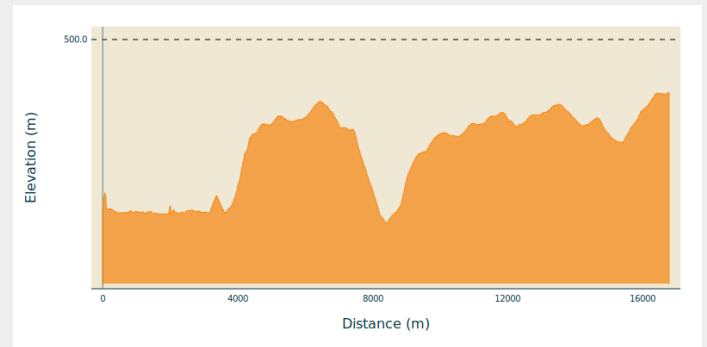
**Departure** : 6830 - Bouillon

**Arrival** : 6833 - Vivy

**Markings** : ■ Horizontal rectangle - red

**Cities** : 1. Bouillon

## Altimetric profile



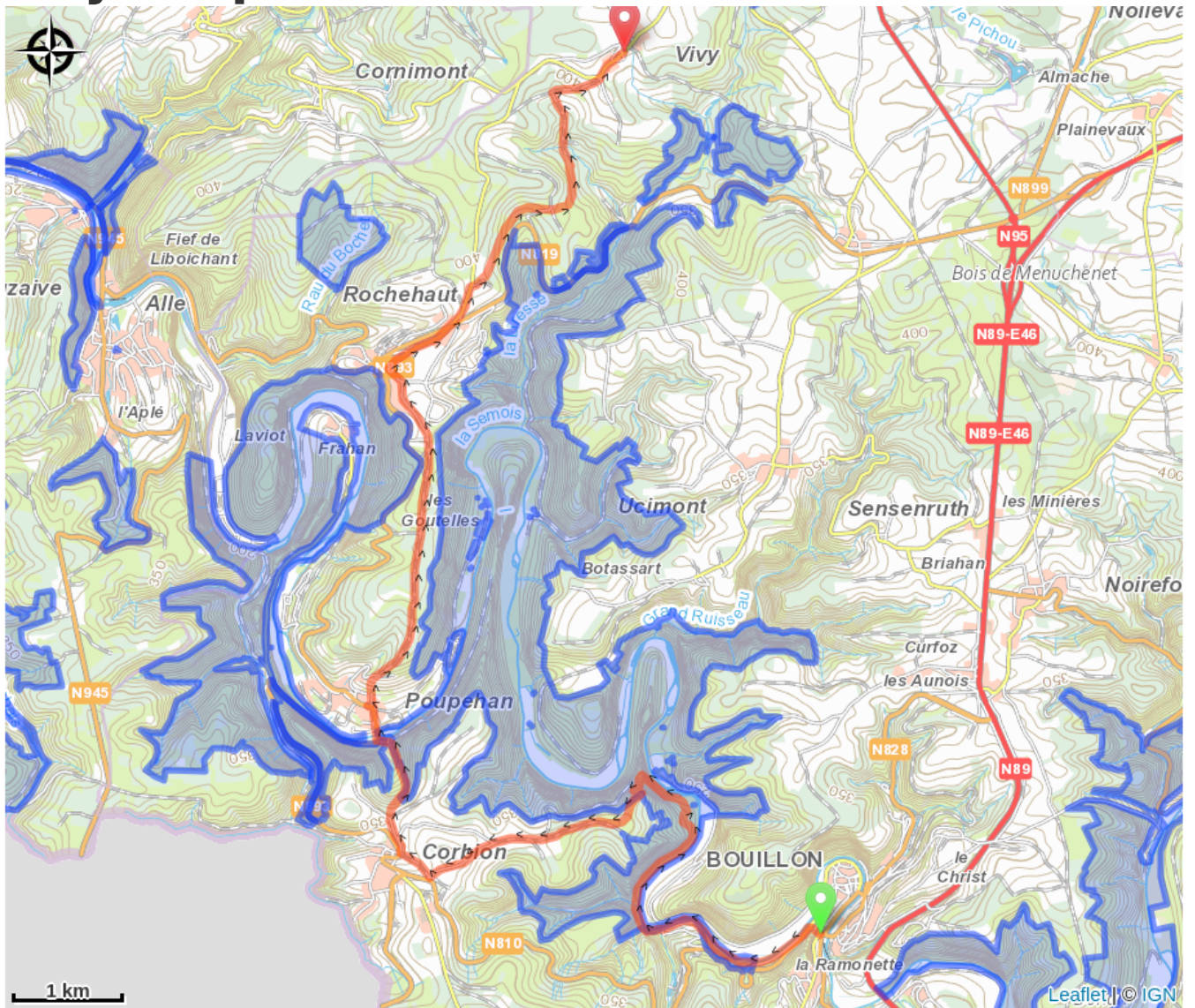
Min elevation 198 m Max elevation 413 m

Magnificent line hike crossing the commune of Bouillon. Its forest massifs with their dreamy landscapes, its typical villages of Corbion, Poupehan, Rochehaut and Vivy will enchant you. A rich itinerary in terms of history, botany and landscape. A rustic path, wild in places or a large stone path at other times.

You can return via the forest path from Vivy to Mogimont and at the end of the wood, turn right onto the GR 14 to Bouillon. 12.5 km from Vivy to Bouillon. Total 30 km.

Possibility to stay at Rochehaut. Bus from Vivy only on weekdays (not weekends) to Bouillon.

# On your path...



# All useful information

# Environmental sensitive areas

Along your trek, you will go through sensitive areas related to the presence of a specific species or environment. In these areas, an appropriate behaviour allows to contribute to their preservation. For detailed information, specific forms are accessible for each area.

## **Bassin de la Semois de Bouillon à Alle**

Sensitivity period:

Contact:

[Biodiversité Wallonie](#)



## **Vallée de la Semois de Poupehan à Alle (Bouillon; Vresse-sur-Semois)**

Sensitivity period:

Contact:

[Biodiversité Wallonie](#)

Site of high biological interest

## **Ardoisière de Gérardfosse (Bouillon)**

Sensitivity period:

Contact:

[Biodiversité Wallonie](#)

Site of high biological interest

## **Château-fort de Bouillon (Bouillon)**

Sensitivity period:

Contact:

[Biodiversité Wallonie](#)

Site of high biological interest

## **Ile du camping du Vieux Moulin (Bouillon)**

Sensitivity period:

Contact:

[Biodiversité Wallonie](#)

Site of high biological interest

### **Ile du Pic du Diable (Bouillon)**

Sensitivity period:

Contact:

[Biodiversité Wallonie](#)

Site of high biological interest

### **La Grande Prairie (Bouillon)**

Sensitivity period:

Contact:

[Biodiversité Wallonie](#)

Site of high biological interest

### **Le Tombeau du Géant (Bouillon)**

Sensitivity period:

Contact:

[Biodiversité Wallonie](#)

Site of high biological interest

### **Noue de Morsehan (Bouillon)**

Sensitivity period:

Contact:

[Biodiversité Wallonie](#)

Site of high biological interest

### **Gerardfosse (Ardoisiere)**

Sensitivity period:

Contact:

[Biodiversité Wallonie](#)

State-owned nature reserve

