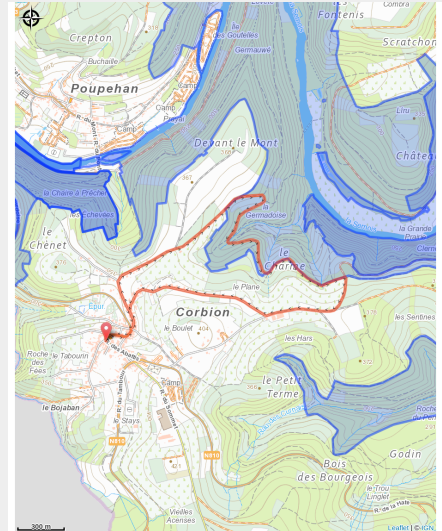
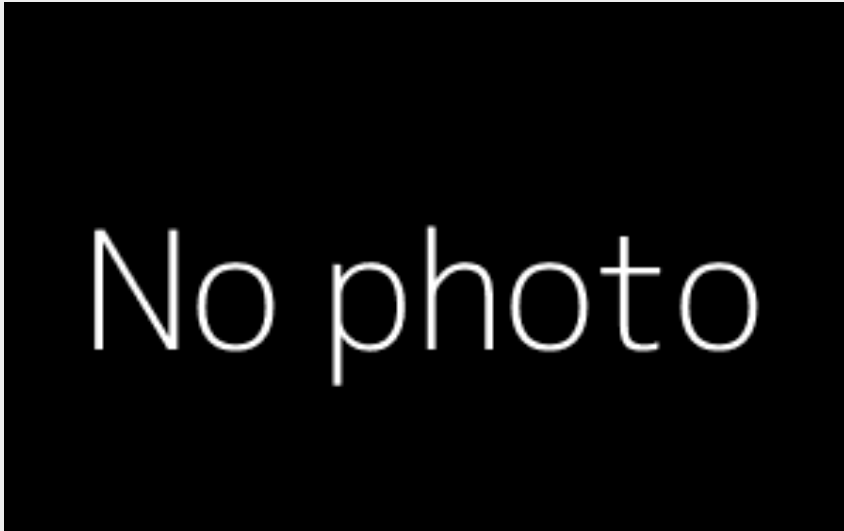


Germadoises



Useful information

Practice : On foot

Duration : 1 h 30

Length : 5.4 km

Trek ascent : 114 m

Difficulty : Easy

Type : Loop

Trek

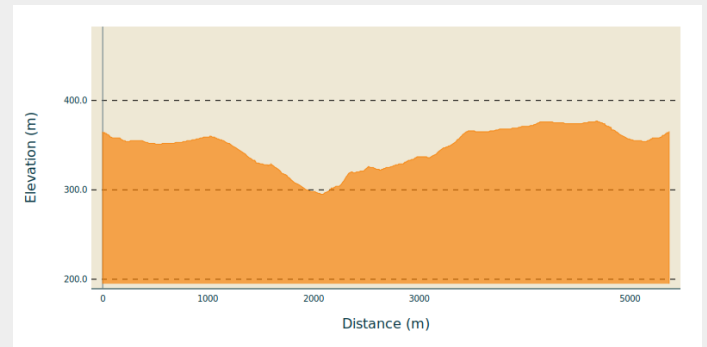
Departure : 6838 - Corbion

Arrival : 6838 - Corbion

Markings : ■ Horizontal rectangle - red

Cities : 1. Bouillon

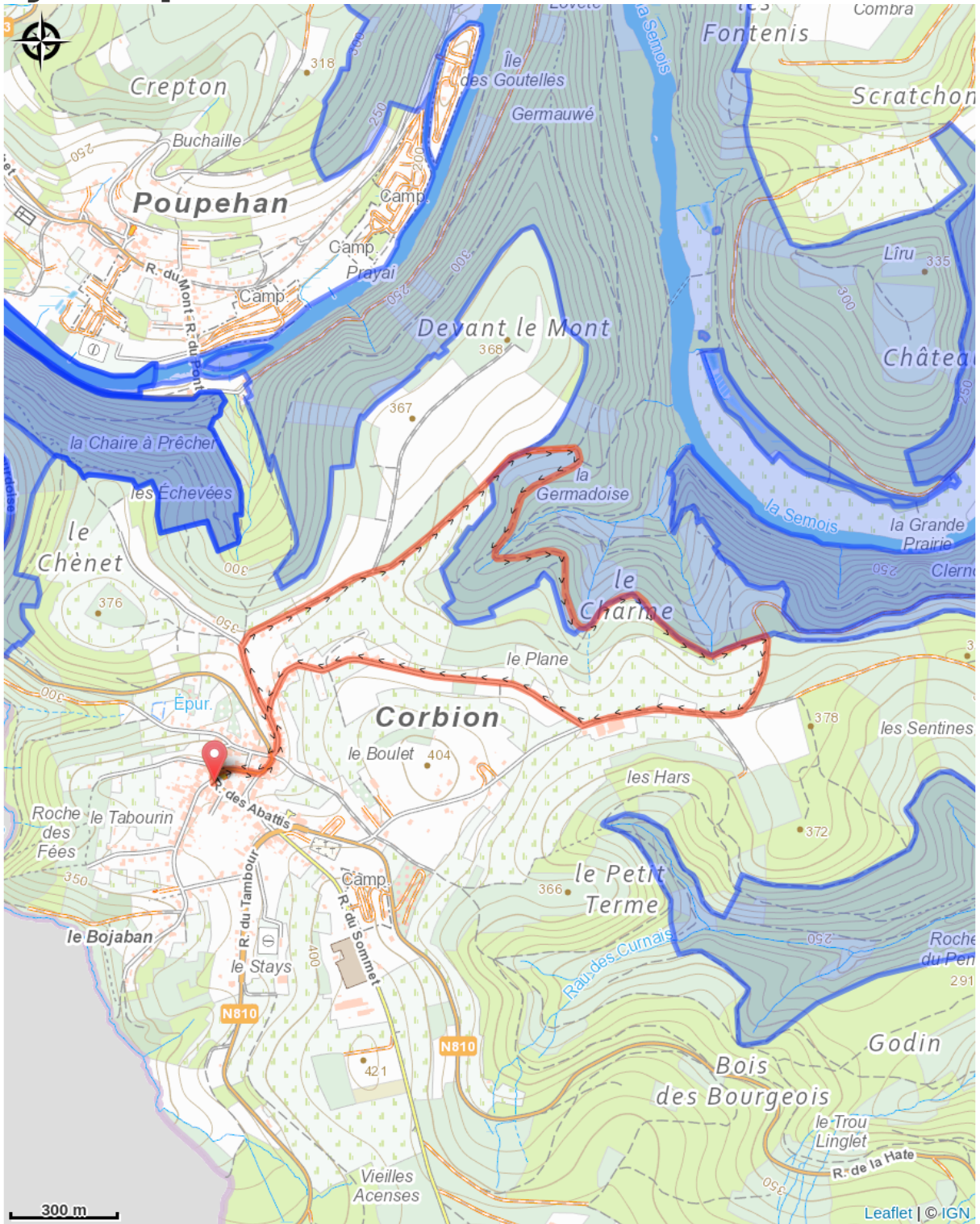
Altimetric profile



Min elevation 295 m Max elevation 377 m

Nice walk in the village of Corbion on the heights, some beautiful landscapes and quiet places. The barbecue area of L'Ecaillère will also allow you to have a barbecue if you wish with its fully equipped area.

On your path...



All useful information

Environmental sensitive areas

Along your trek, you will go through sensitive areas related to the presence of a specific species or environment. In these areas, an appropriate behaviour allows to contribute to their preservation. For detailed information, specific forms are accessible for each area.

Bassin de la Semois de Bouillon à Alle

Sensitivity period:

Contact:

[Biodiversité Wallonie](#)



Vallée de la Semois de Poupehan à Alle (Bouillon; Vresse-sur-Semois)

Sensitivity period:

Contact:

[Biodiversité Wallonie](#)

Site of high biological interest

La Grande Prairie (Bouillon)

Sensitivity period:

Contact:

[Biodiversité Wallonie](#)

Site of high biological interest

Le Tombeau du Géant (Bouillon)

Sensitivity period:

Contact:

[Biodiversité Wallonie](#)

Site of high biological interest