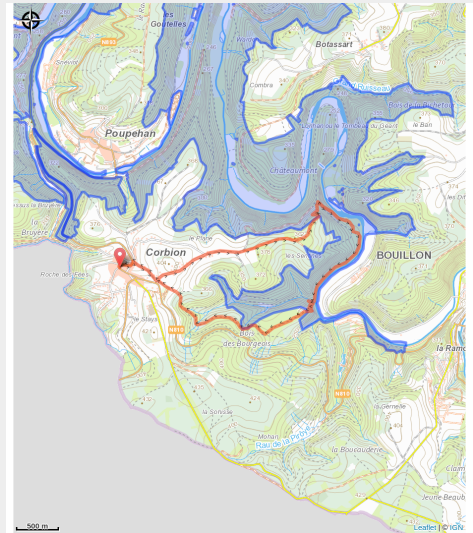


Points de vue de l'Epine, Augustins



(MTBA - C. Francois)



Useful information

Practice : On foot

Duration : 3 h

Length : 8.4 km

Trek ascent : 303 m

Difficulty : Difficult

Type : Loop

Trek

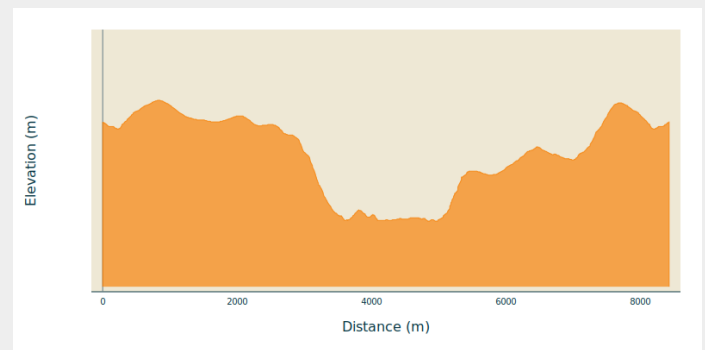
Departure : 6838 - Corbion

Arrival : 6838 - Corbion

Markings : ■ Horizontal rectangle - red

Cities : 1. Bouillon

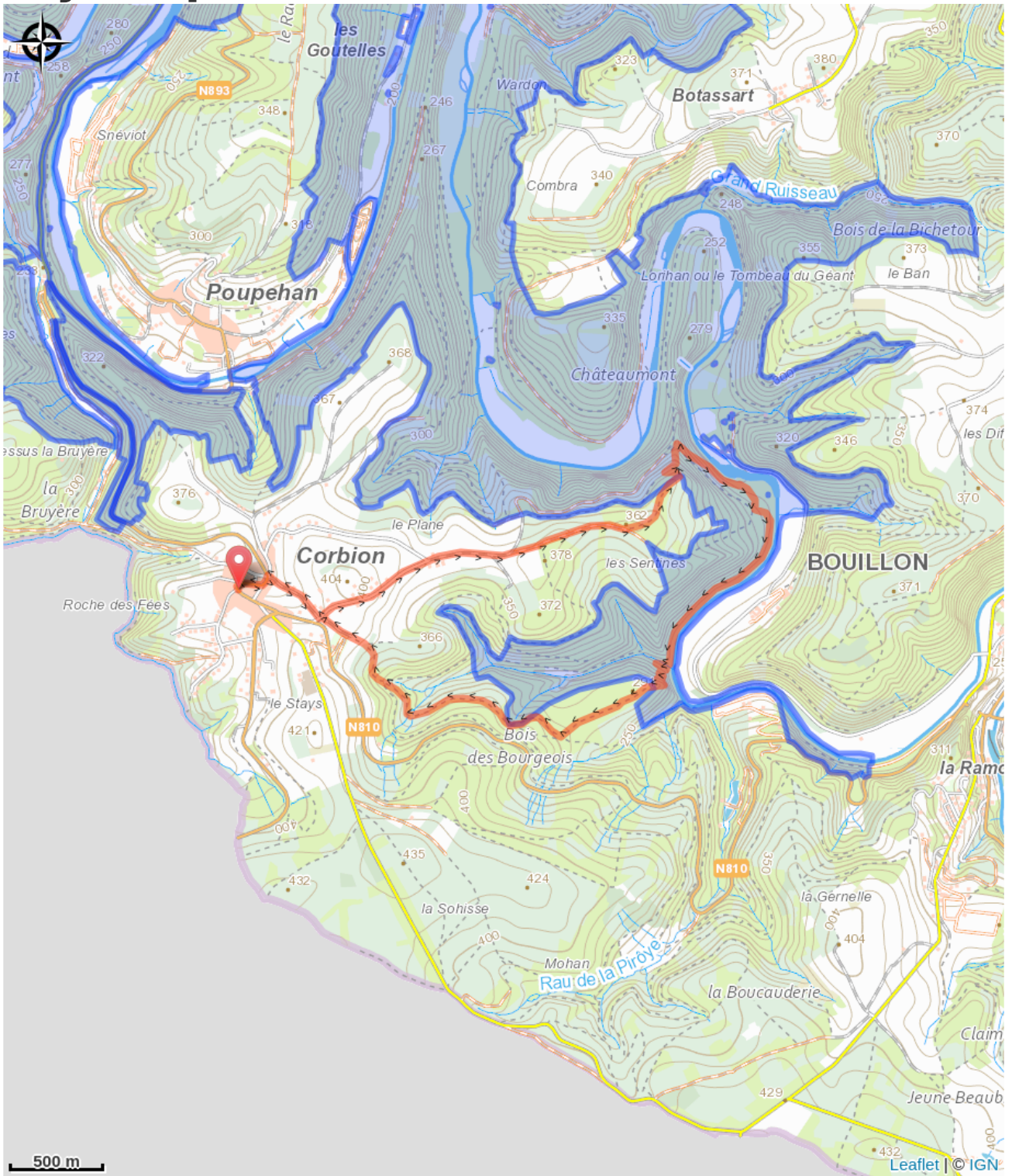
Altimetric profile



Min elevation 214 m Max elevation 398 m

A magnificent walk that will allow you to discover the pretty, typical village of Corbion, breathtaking views and the tranquillity of the banks of the Semois. The past will be omnipresent during this walk. The opportunity to discover the Giant's Tomb from another angle.

On your path...



All useful information

Environmental sensitive areas

Along your trek, you will go through sensitive areas related to the presence of a specific species or environment. In these areas, an appropriate behaviour allows to contribute to their preservation. For detailed information, specific forms are accessible for each area.

Bassin de la Semois de Bouillon à Alle

Sensitivity period:

Contact:

[Biodiversité Wallonie](#)



Ile du Pic du Diable (Bouillon)

Sensitivity period:

Contact:

[Biodiversité Wallonie](#)

Site of high biological interest

La Grande Prairie (Bouillon)

Sensitivity period:

Contact:

[Biodiversité Wallonie](#)

Site of high biological interest

Le Tombeau du Géant (Bouillon)

Sensitivity period:

Contact:

[Biodiversité Wallonie](#)

Site of high biological interest