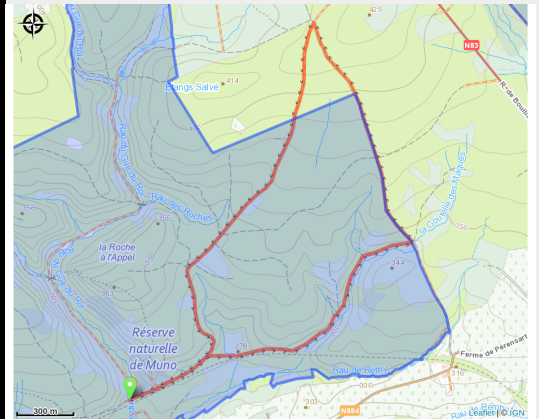


Goutelle des Maques



No photo



Useful information

Practice : On foot

Length : 5.9 km

Trek ascent : 175 m

Difficulty : Easy

Type : Loop

Trek

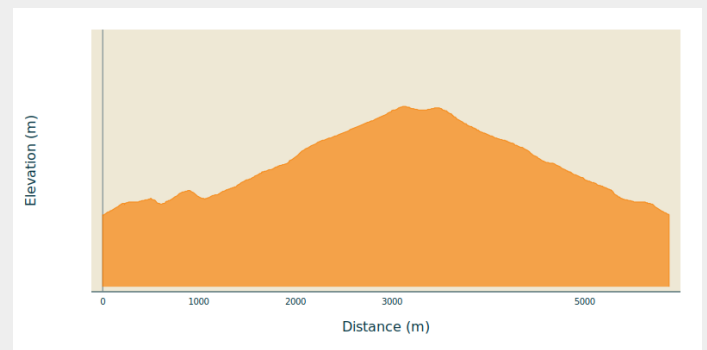
Departure : 6820 - Muno

Arrival : 6820 - Muno

Markings : ■ N1 - Green

Cities : 1. Florenville

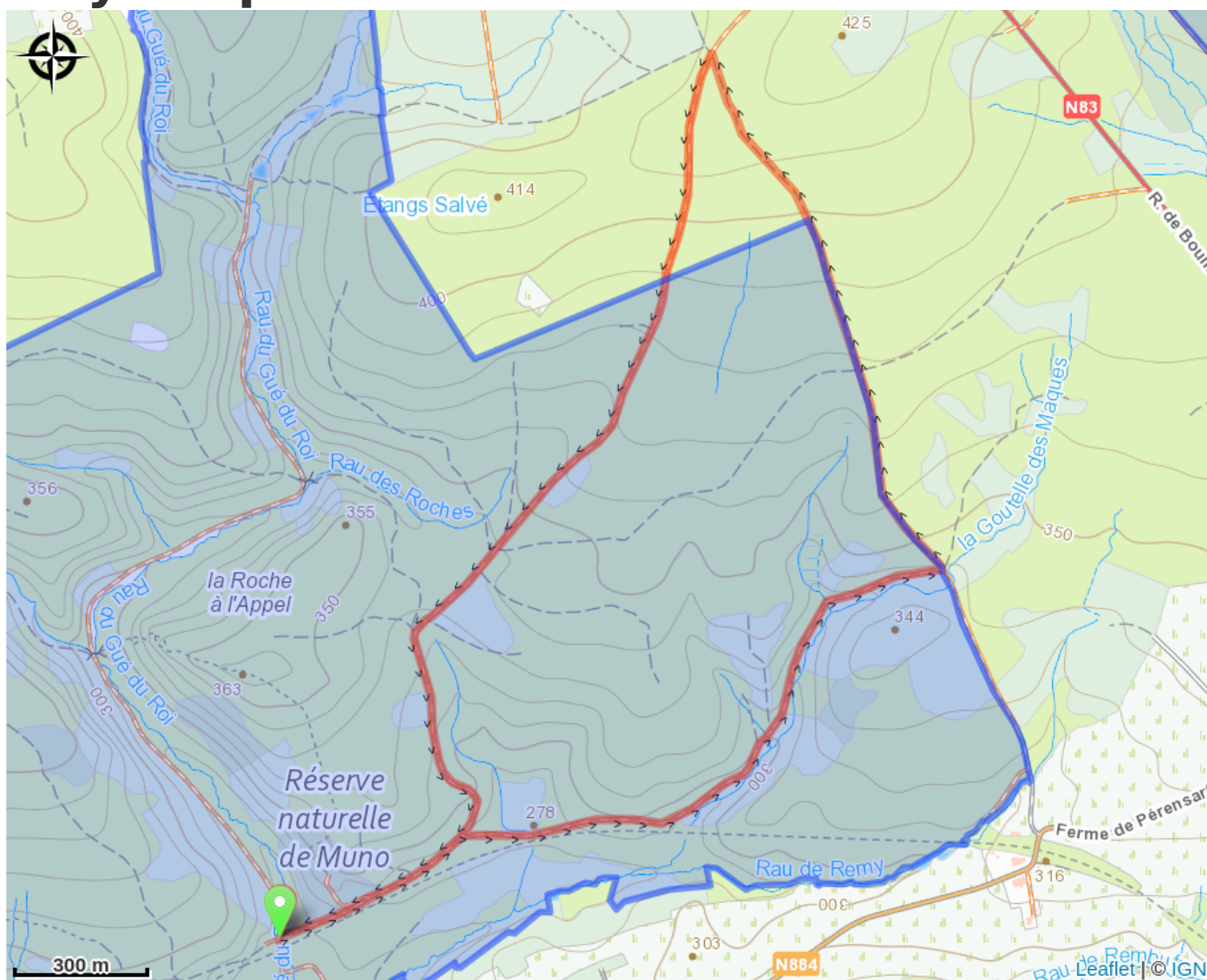
Altimetric profile



Min elevation 266 m Max elevation 417 m

Au départ de Muno, cette promenade forestière longe le ruisseau du même nom et traverse la réserve naturelle, offrant une atmosphère calme et ressourçante.

On your path...



All useful information

Environmental sensitive areas

Along your trek, you will go through sensitive areas related to the presence of a specific species or environment. In these areas, an appropriate behaviour allows to contribute to their preservation. For detailed information, specific forms are accessible for each area.

Forêts de Muno

Sensitivity period:

Contact:

[Biodiversité Wallonie](#)



La Roche à l'Appel (Florenville)

Sensitivity period:

Contact:

[Biodiversité Wallonie](#)

Site of high biological interest

Roche a l'Appel

Sensitivity period:

Contact:

[Biodiversité Wallonie](#)

State-owned nature reserve