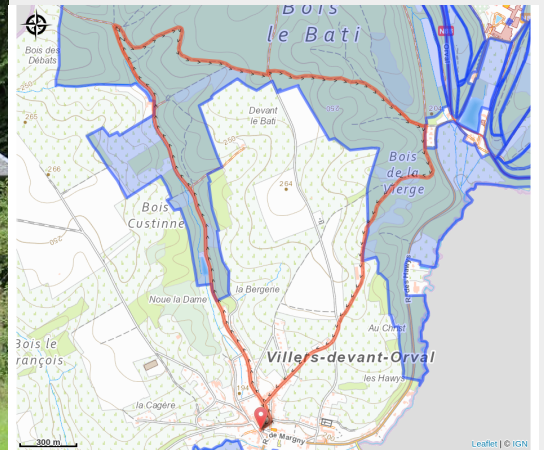


Le Bois de la Vierge



(MTG)



Useful information

Practice : On foot

Length : 6.7 km

Trek ascent : 138 m

Difficulty : Medium

Type : Loop

Trek

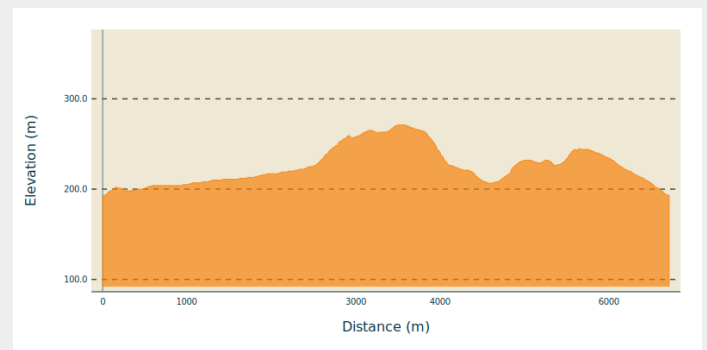
Departure : 6823 - Villers-devant-Orval

Arrival : 6823 - Villers-devant-Orval

Markings : ■ N1 - Blue

Cities : 1. Florenville

Altimetric profile

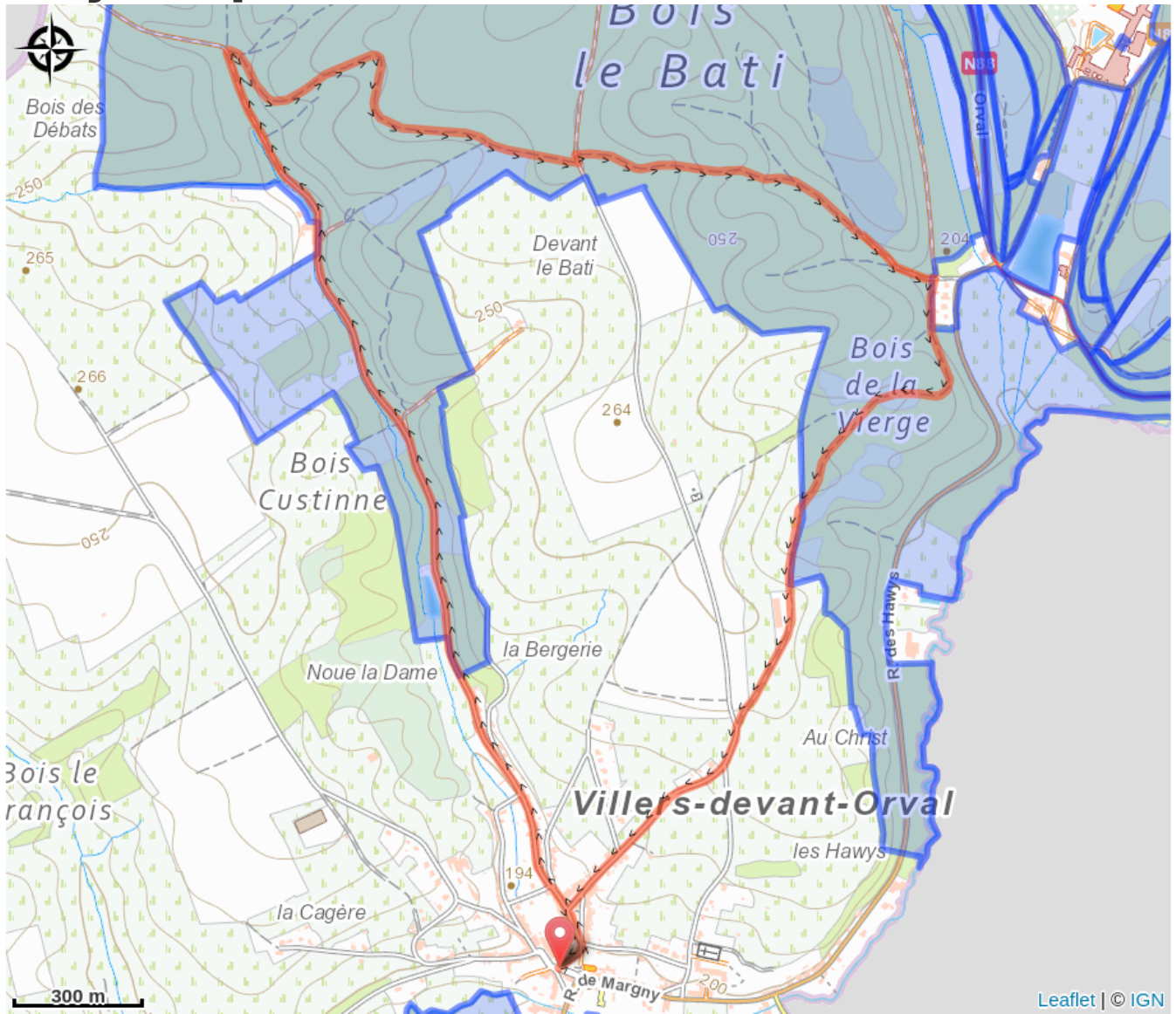


Min elevation 192 m Max elevation 271 m

You are here in the village of Villers-Devant-Orval. Bordering France on three sides, this village and its woods cannot fail to delight you.

Want more? Find this walk in our folder “ The Bucolic Walks” as well as on the map of Chiny/Florenville/Herbeumont walks, to be discovered in our GaumeShop!

On your path...



All useful information

Environmental sensitive areas

Along your trek, you will go through sensitive areas related to the presence of a specific species or environment. In these areas, an appropriate behaviour allows to contribute to their preservation. For detailed information, specific forms are accessible for each area.

Bassin de la Marche

Sensitivity period:

Contact:

[Biodiversité Wallonie](#)



Abbaye d'Orval et Ruisseau de la Mouline (Florenville)

Sensitivity period:

Contact:

[Biodiversité Wallonie](#)

Site of high biological interest

Plaine alluviale de la Marge à Villers-devant-Orval (Florenville)

Sensitivity period:

Contact:

[Biodiversité Wallonie](#)

Site of high biological interest

Souterrain et prairies de Neufmoulin (Florenville)

Sensitivity period:

Contact:

[Biodiversité Wallonie](#)

Site of high biological interest

Vallée du ruisseau de Williers (Florenville)

Sensitivity period:

Contact:

[Biodiversité Wallonie](#)

Site of high biological interest

Pre la Rosiere

Sensitivity period:

Contact:

[Biodiversité Wallonie](#)

State-owned nature reserve

Pres de l'abbaye d'Orval

Sensitivity period:

Contact:

[Biodiversité Wallonie](#)

State-owned nature reserve

Souterrain du Neufmoulin

Sensitivity period:

Contact:

[Biodiversité Wallonie](#)

State-owned nature reserve

Villers-devant-Orval

Sensitivity period:

Contact:

[Biodiversité Wallonie](#)

Accredited nature reserve