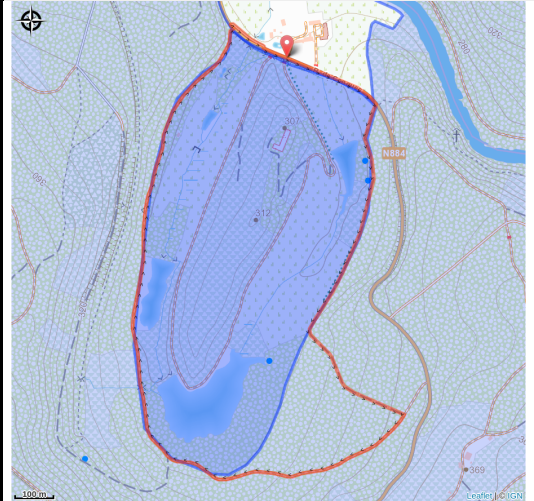


Les Etangs des Conques



No photo



Useful information

Practice : On foot

Length : 3.5 km

Trek ascent : 66 m

Difficulty : Easy

Type : Loop

Trek

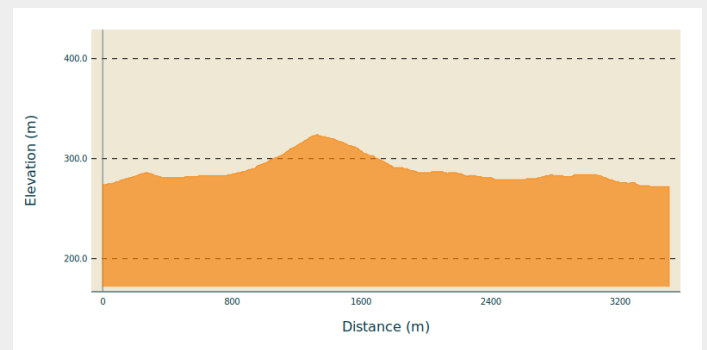
Departure : rue des épioux, 6820 - Sainte-Cécile

Arrival : rue des épioux, 6820 - Sainte-Cécile

Markings : ■ N1 - Blue

Cities : 1. Florenville

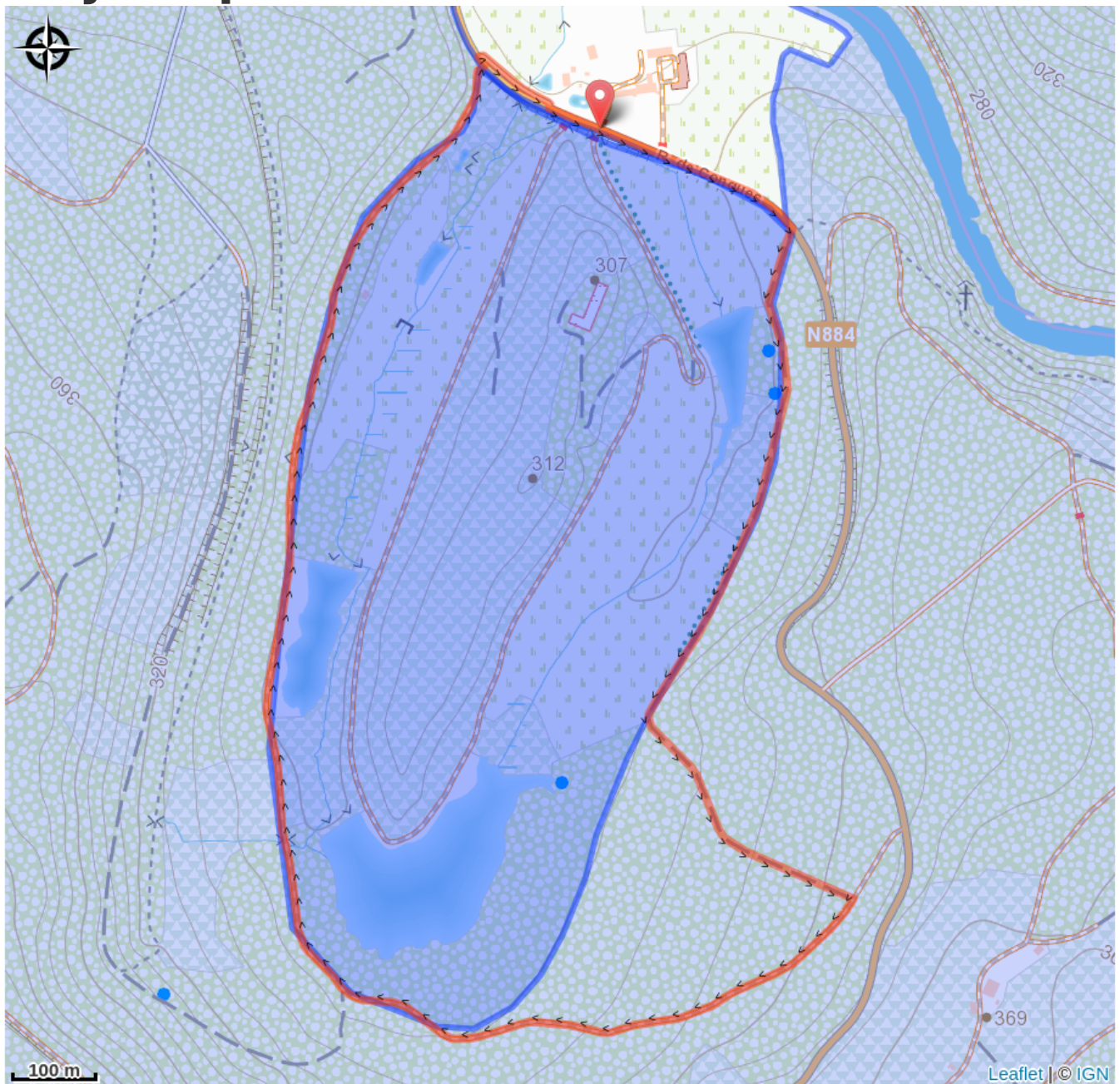
Altimetric profile



Min elevation 272 m Max elevation 324 m

Cette petite promenade facile, accessible à tous, vous emmène à la découverte des étangs de Conques, nichés en milieu forestier.

On your path...



All useful information

Environmental sensitive areas

Along your trek, you will go through sensitive areas related to the presence of a specific species or environment. In these areas, an appropriate behaviour allows to contribute to their preservation. For detailed information, specific forms are accessible for each area.

Bassin de la Semois de Florenville à Auby

Sensitivity period:

Contact:

[Biodiversité Wallonie](#)



Etangs de Conques (Florenville)

Sensitivity period:

Contact:

[Biodiversité Wallonie](#)

Site of high biological interest