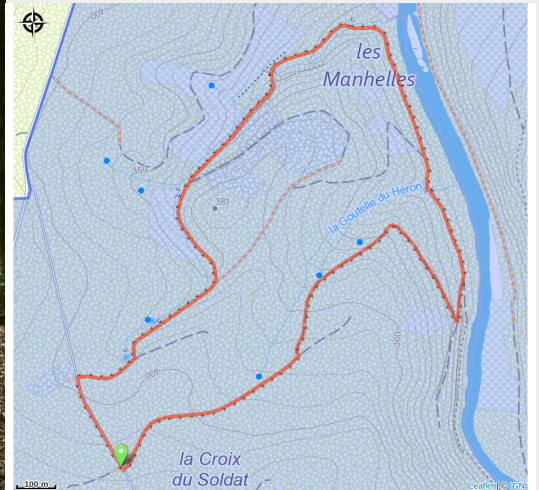


Croix du Soldat



(Michel Laurent/La Lorraine Gaumaise)



Useful information

Practice : On foot

Length : 4.1 km

Trek ascent : 158 m

Difficulty : Medium

Type : Loop

Trek

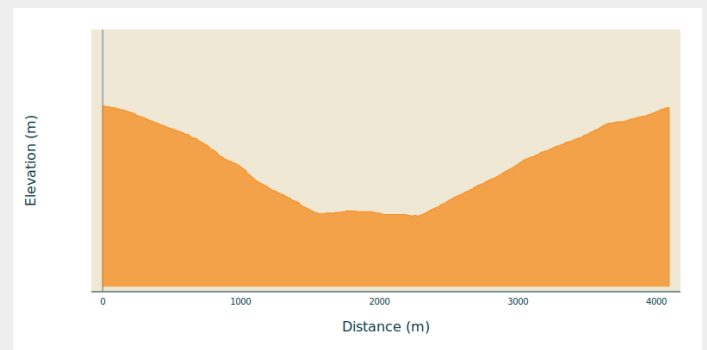
Departure : 6820 - Sainte-Cécile

Arrival : 6820 - Sainte-Cécile

Markings : ■ N1 - Yellow

Cities : 1. Florenville

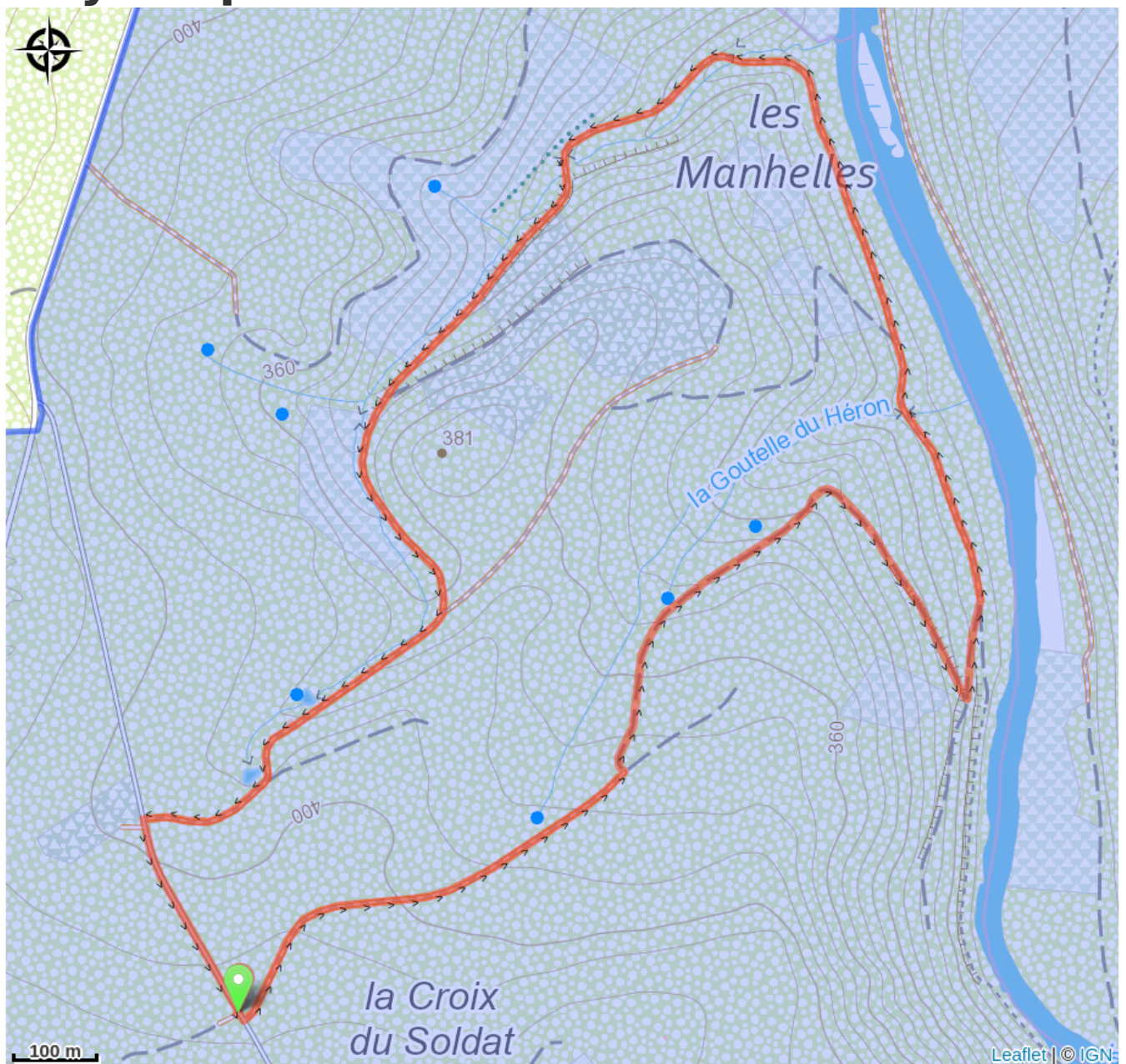
Altimetric profile



Min elevation 261 m Max elevation 417 m

.Cette balade au nom évocateur longe la Semois avant de revenir par un sentier plus pentu, mais agréable.

On your path...



All useful information

Environmental sensitive areas

Along your trek, you will go through sensitive areas related to the presence of a specific species or environment. In these areas, an appropriate behaviour allows to contribute to their preservation. For detailed information, specific forms are accessible for each area.

Bassin de la Semois de Florenville à Auby

Sensitivity period:

Contact:

[Biodiversité Wallonie](#)



Méandre du Tombeau du Chevalier (Herbeumont)

Sensitivity period:

Contact:

[Biodiversité Wallonie](#)

Site of high biological interest