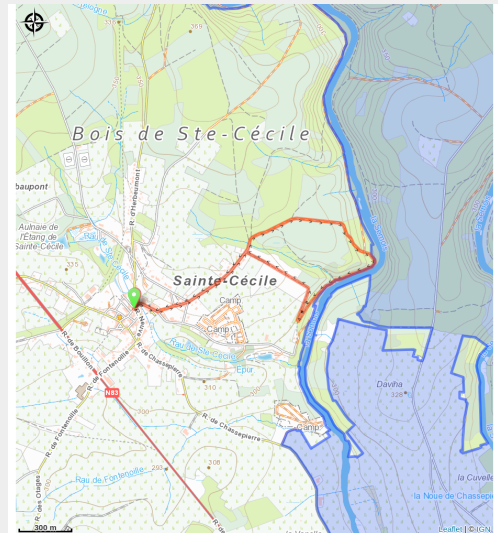


La Mécanique



(Michel Laurent/La Lorraine Gaumaise)



Useful information

Practice : On foot

Length : 3.8 km

Trek ascent : 81 m

Difficulty : Easy

Type : Loop

Trek

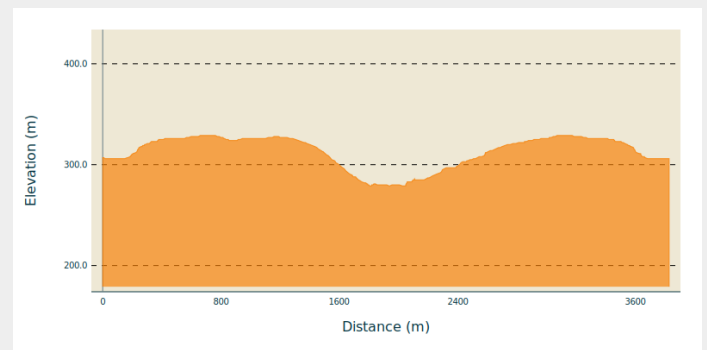
Departure : Rue Neuve, 6820 - Sainte-Cécile

Arrival : Rue Neuve, 6820 - Sainte-Cécile

Markings : ■ N1 - Blue

Cities : 1. Florenville

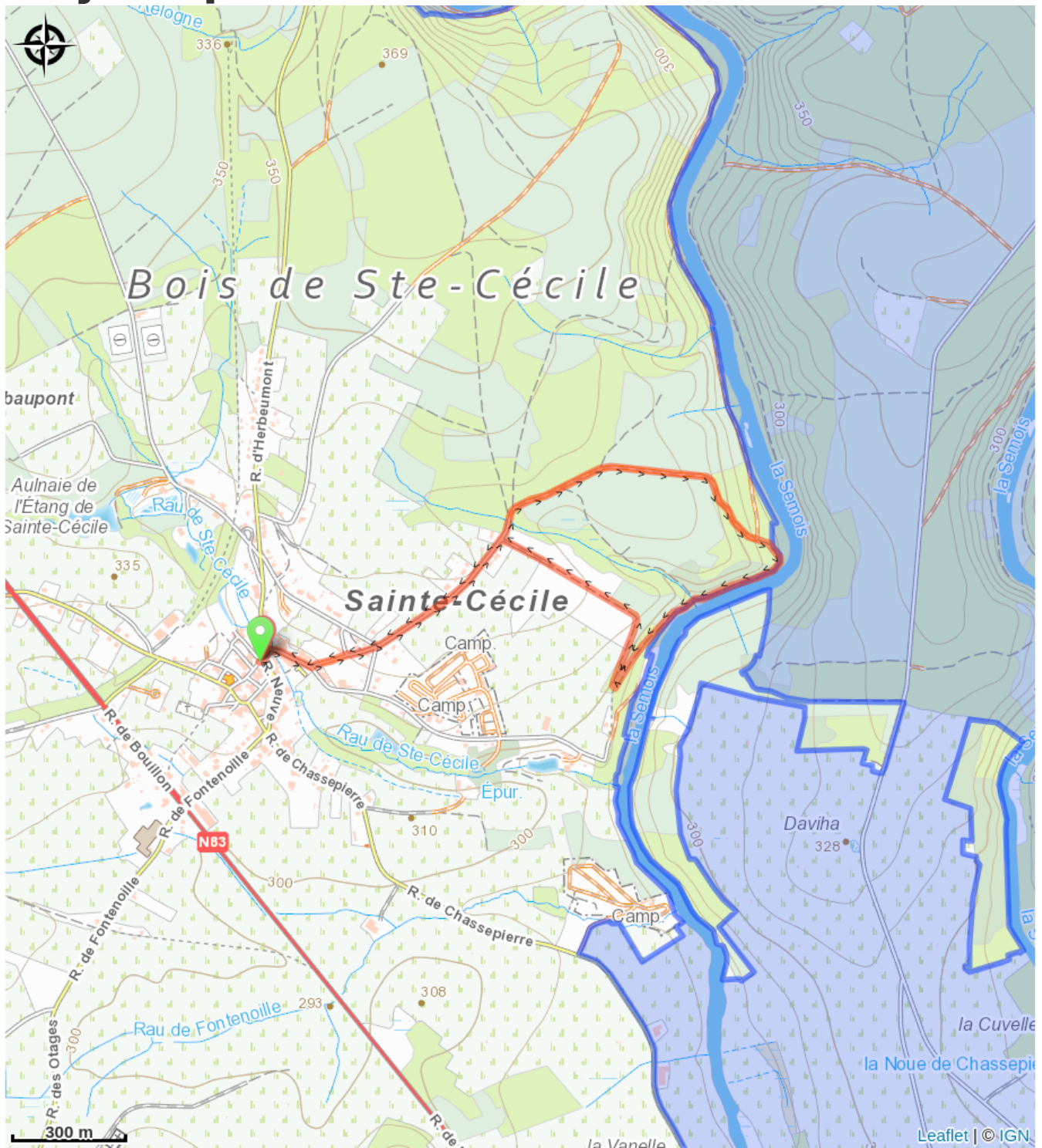
Altimetric profile



Min elevation 279 m Max elevation 329 m

.Au départ de Sainte-Cécile, cette promenade bucolique vous mène à travers la nature environnante jusqu'aux rives de la Semois.

On your path...



All useful information

Environmental sensitive areas

Along your trek, you will go through sensitive areas related to the presence of a specific species or environment. In these areas, an appropriate behaviour allows to contribute to their preservation. For detailed information, specific forms are accessible for each area.

Bassin de la Semois de Florenville à Auby

Sensitivity period:

Contact:

[Biodiversité Wallonie](#)



Ile de Sainte-Cécile (Florenville)

Sensitivity period:

Contact:

[Biodiversité Wallonie](#)

Site of high biological interest