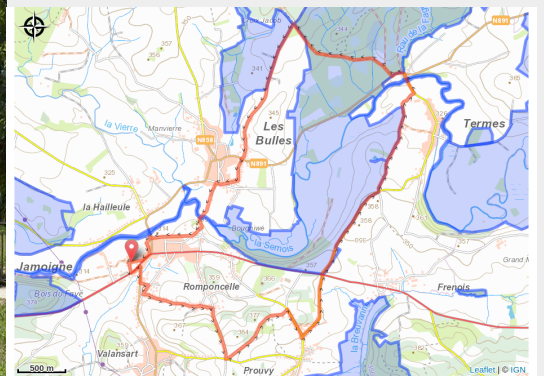


“Along the meanders of the Semois”



(Michel Laurent/La Lorraine Gaumaise)



Useful information

Practice : On foot

Length : 11.9 km

Trek ascent : 153 m

Difficulty : Medium

Type : Loop

Trek

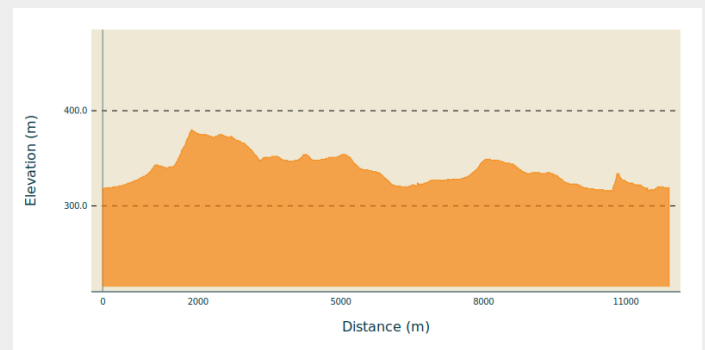
Departure : Rue du Faing, 6810 -
Jamoigne

Arrival : Rue du Faing, 6810 - Jamoigne

Markings : ■ Horizontal rectangle - red

Cities : 1. Chiny

Altimetric profile

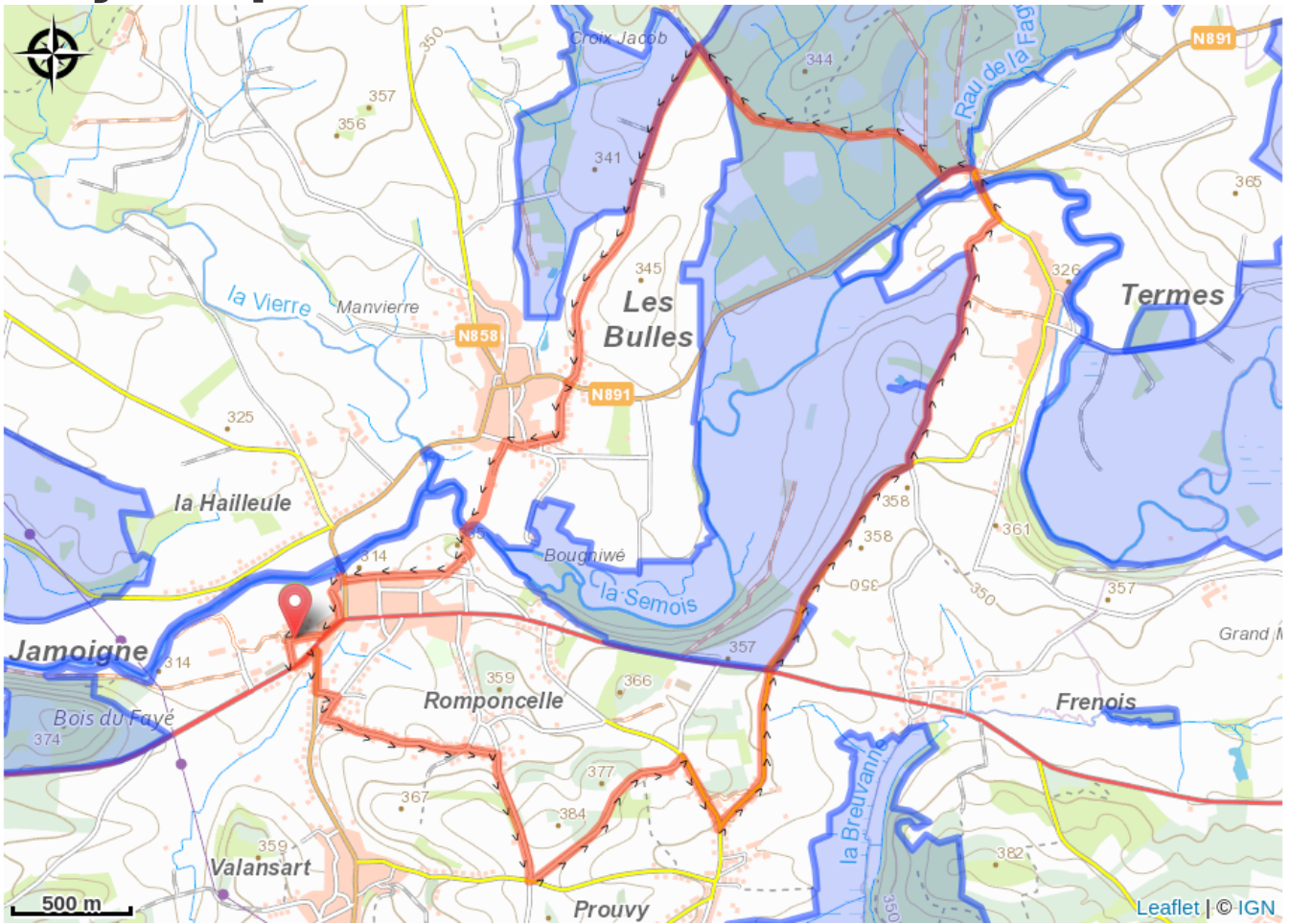


Min elevation 315 m Max elevation 380 m

Welcome to the village of Jamoigne. On your walk you will not only discover the village of Jamoigne, its history and heritage but also the surrounding villages, each with their specific features and attractions.

Want more? Find this walk in our folder “ The Bucolic Walks” to be discovered in our GaumeShop!

On your path...



All useful information

Environmental sensitive areas

Along your trek, you will go through sensitive areas related to the presence of a specific species or environment. In these areas, an appropriate behaviour allows to contribute to their preservation. For detailed information, specific forms are accessible for each area.

Bassin de la Semois de Jamoigne à Chiny

Sensitivity period:

Contact:

[Biodiversité Wallonie](#)



Bassin de la Semois entre Tintigny et Jamoigne

Sensitivity period:

Contact:

[Biodiversité Wallonie](#)



Vallée du Ruisseau de Breuvanne

Sensitivity period:

Contact:

[Biodiversité Wallonie](#)



Bras-mort de Bougniwé (Chiny)

Sensitivity period:

Contact:

[Biodiversité Wallonie](#)

Site of high biological interest

La Maise (Chiny)

Sensitivity period:

Contact:

[Biodiversité Wallonie](#)

Site of high biological interest

La Praille (Chiny)

Sensitivity period:

Contact:

[Biodiversité Wallonie](#)

Site of high biological interest

Marais de Prouvy et de Rawez (Chiny; Tintigny)

Sensitivity period:

Contact:

[Biodiversité Wallonie](#)

Site of high biological interest

Prairie humide de la vallée du Sandre (Chiny)

Sensitivity period:

Contact:

[Biodiversité Wallonie](#)

Site of high biological interest

Ribausa (Chiny)

Sensitivity period:

Contact:

[Biodiversité Wallonie](#)

Site of high biological interest

Bassin de la Semois

Sensitivity period:

Contact:

[Biodiversité Wallonie](#)

State-owned nature reserve

Les Bulles

Sensitivity period:

Contact:

[Biodiversité Wallonie](#)

Accredited nature reserve

Ribausa

Sensitivity period:

Contact:

[Biodiversité Wallonie](#)

Accredited nature reserve