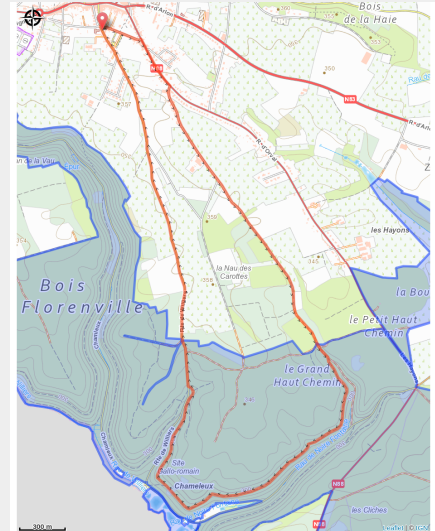
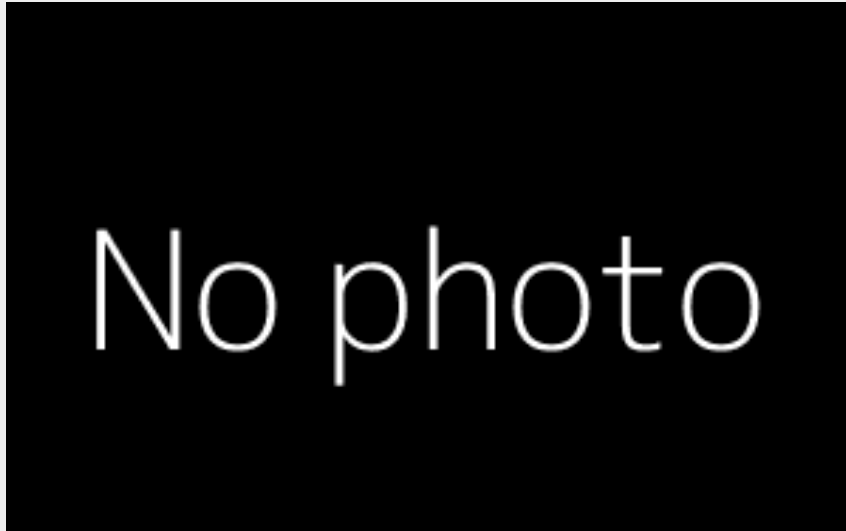


Chameleux



Useful information

Practice : On foot

Length : 8.2 km

Trek ascent : 108 m

Difficulty : Medium

Type : Loop

Trek

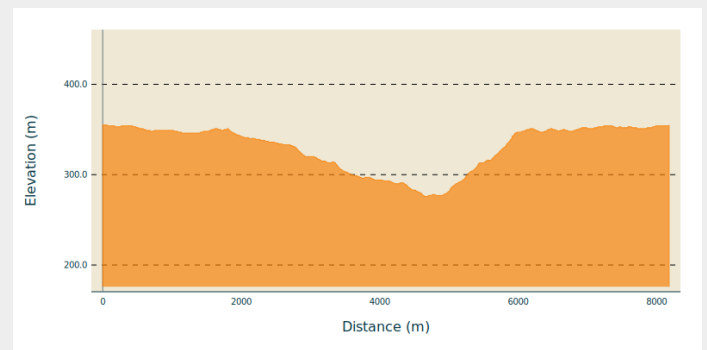
Departure : 6823 - Villers-devant-Orval

Arrival : 6823 - Villers-devant-Orval

Markings : ■ N1 - Blue

Cities : 1. Florenville

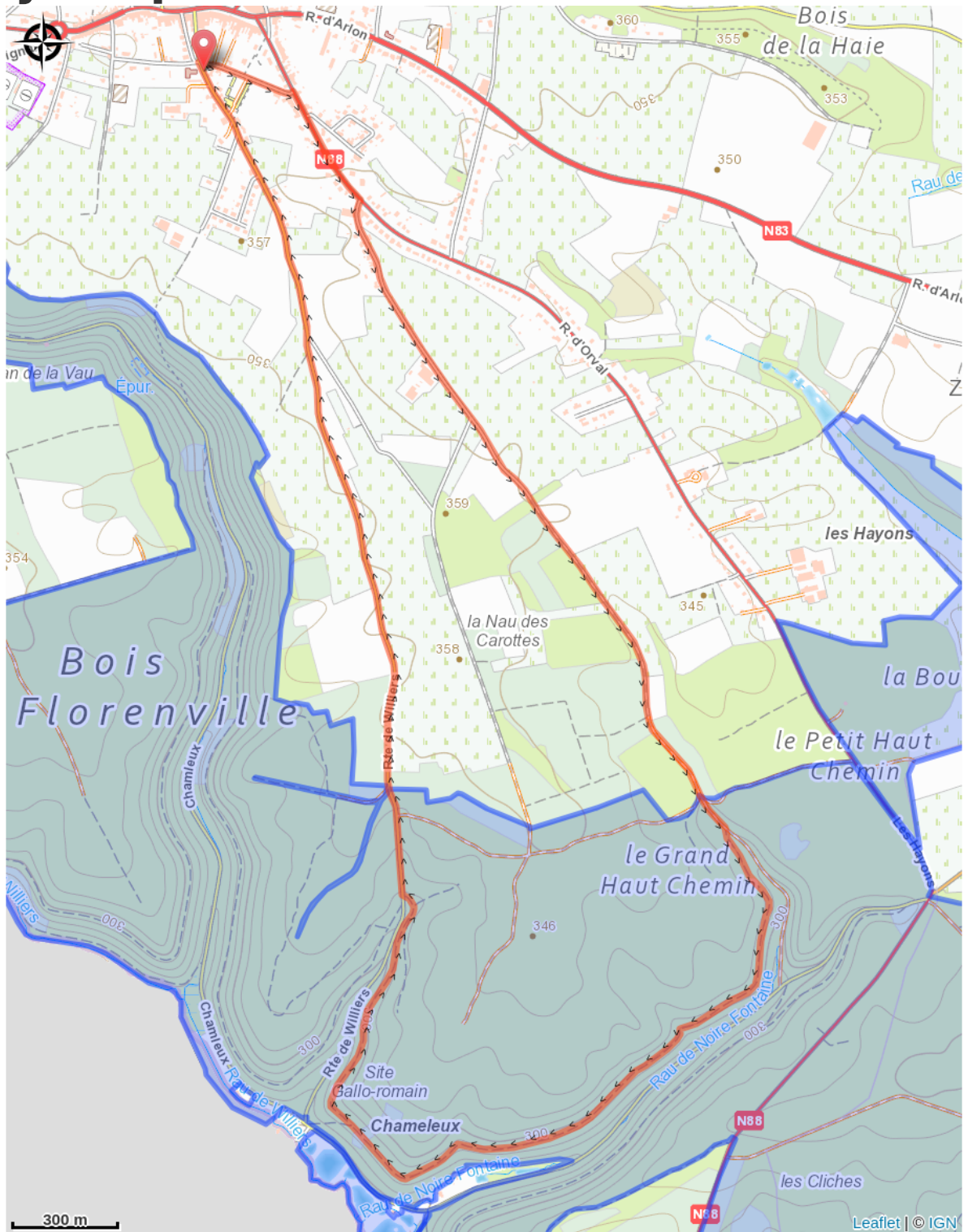
Altimetric profile



Min elevation 276 m Max elevation 355 m

Cette jolie promenade prend son départ au centre de Florenville. Elle vous conduit entre champs et forêts jusqu'à Chameleux. Un détour permet de découvrir le site gallo-romain. Le retour se fait par un sentier boisé facile et agréable.

On your path...



All useful information

Environmental sensitive areas

Along your trek, you will go through sensitive areas related to the presence of a specific species or environment. In these areas, an appropriate behaviour allows to contribute to their preservation. For detailed information, specific forms are accessible for each area.

Bassin de la Semois de Jamoigne à Chiny

Sensitivity period:

Contact:

[Biodiversité Wallonie](#)



Bassin de la Marche

Sensitivity period:

Contact:

[Biodiversité Wallonie](#)



Etangs de Chameleux (Florenville)

Sensitivity period:

Contact:

[Biodiversité Wallonie](#)

Site of high biological interest