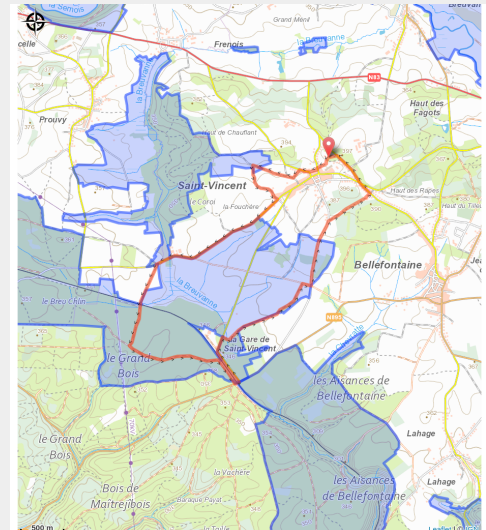


Le chemin des ouvriers des forges



Useful information

Practice : On foot

Length : 10.2 km

Trek ascent : 103 m

Difficulty : Easy

Type : Loop

Trek

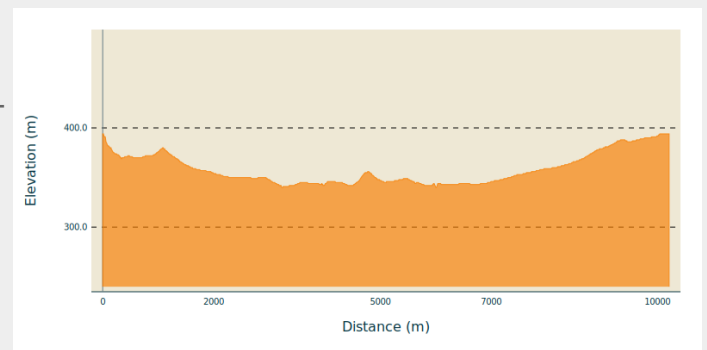
Departure : Rue de la Chapelle, 6730 - Saint-Vincent

Arrival : Rue de la Chapelle, 6730 - Saint-Vincent

Markings :  Right-angled triangle - Red

Cities : 1. Tintigny
2. Chiny

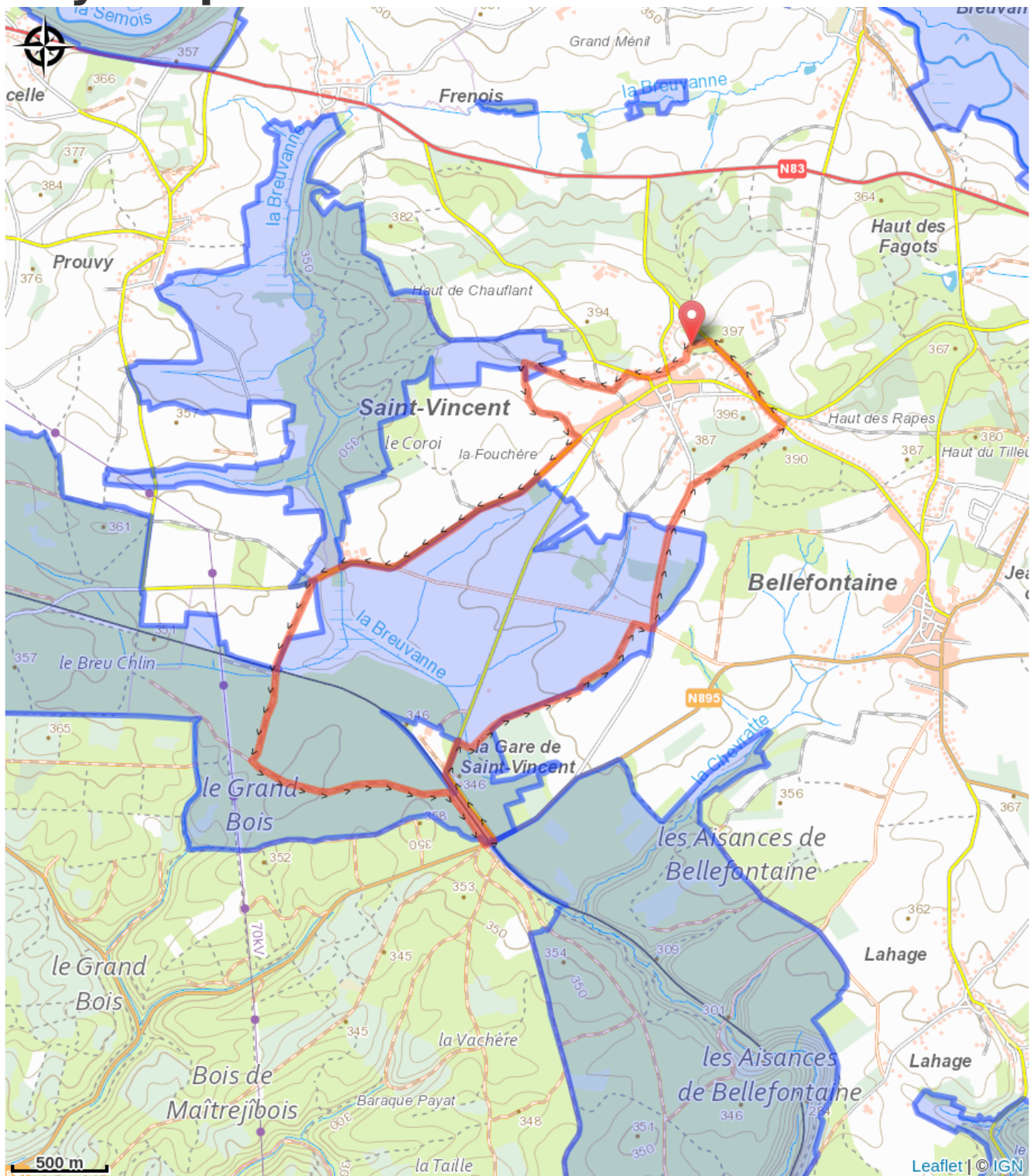
Altimetric profile



Min elevation 340 m Max elevation 394 m

Découverte du village de Saint-Vincent et de ses alentours

On your path...



All useful information

Environmental sensitive areas

Along your trek, you will go through sensitive areas related to the presence of a specific species or environment. In these areas, an appropriate behaviour allows to contribute to their preservation. For detailed information, specific forms are accessible for each area.

Bassin supérieur de la Chevratte

Sensitivity period:

Contact:

[Biodiversité Wallonie](#)



Vallée du Ruisseau de Breuvanne

Sensitivity period:

Contact:

[Biodiversité Wallonie](#)



Ligne SNCB 165 entre Pin et l'ancienne gare de Saint-Vincent (Chiny; Tintigny)

Sensitivity period:

Contact:

[Biodiversité Wallonie](#)

Site of high biological interest

Marais de Prouvy et de Rawez (Chiny; Tintigny)

Sensitivity period:

Contact:

[Biodiversité Wallonie](#)

Site of high biological interest

Bassin de la Semois

Sensitivity period:

Contact:

[Biodiversité Wallonie](#)

State-owned nature reserve

Vallée de la Chevratte (Meix-devant-Virton; Tintigny)

Sensitivity period:

Contact:

[Biodiversité Wallonie](#)

Site of high biological interest