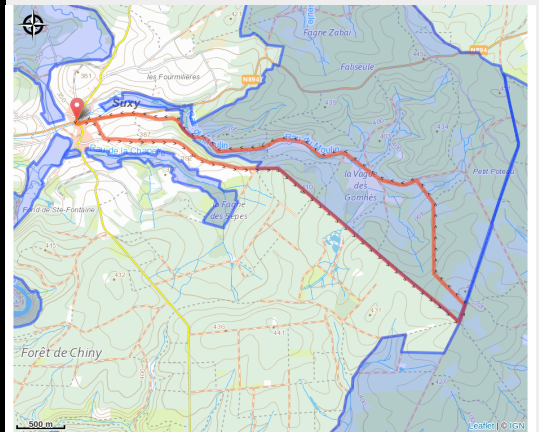


Vague des Gomhets



No photo



Useful information

Practice : On foot

Length : 10.9 km

Trek ascent : 207 m

Difficulty : Easy

Type : Loop

Trek

Departure : 6812 - Suxy

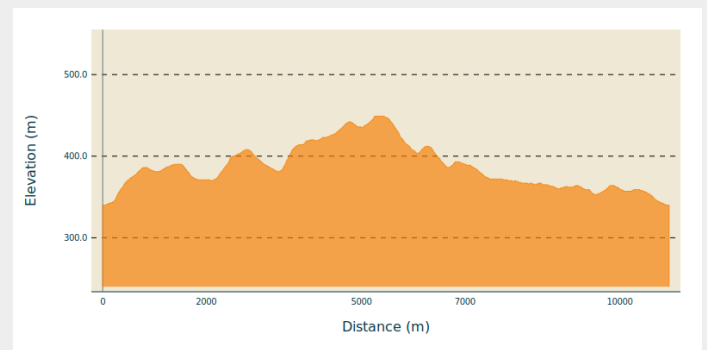
Arrival : 6812 - Suxy

Markings : ■ N1 - Blue

Cities : 1. Chiny

2. Tintigny

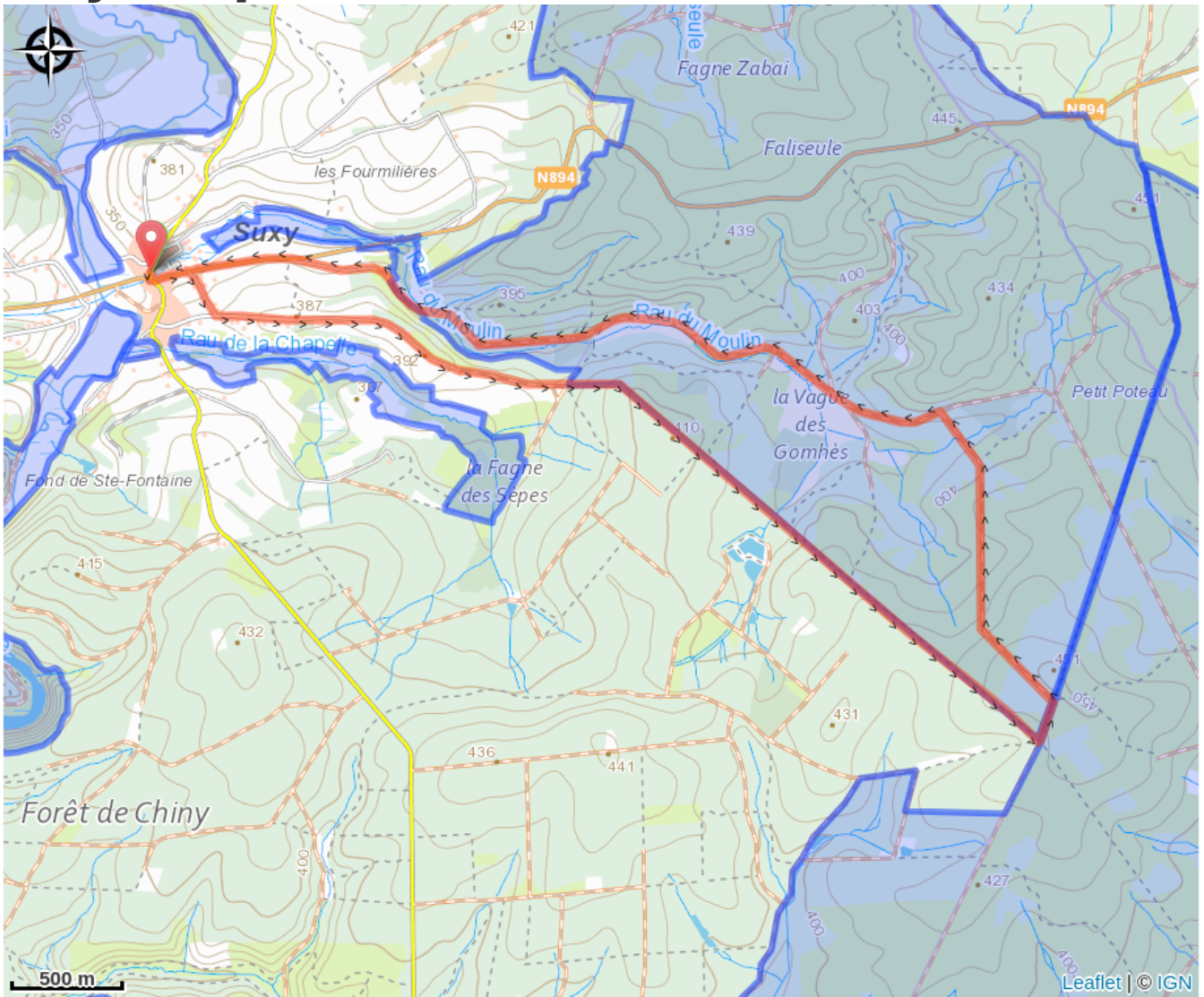
Altimetric profile



Min elevation 340 m Max elevation 449 m

Belle balade qui vous fera traverser une réserve naturelle au cœur de paysages alternant forêts de feuillus et de conifères. De bonnes chaussures sont recommandées.

On your path...



All useful information

Environmental sensitive areas

Along your trek, you will go through sensitive areas related to the presence of a specific species or environment. In these areas, an appropriate behaviour allows to contribute to their preservation. For detailed information, specific forms are accessible for each area.

Basse-Vierre

Sensitivity period:

Contact:

[Biodiversité Wallonie](#)



Bassin de la Semois entre Tintigny et Jamoigne

Sensitivity period:

Contact:

[Biodiversité Wallonie](#)



Vallée de la basse Vierre (Chiny; Herbeumont; Neufchâteau)

Sensitivity period:

Contact:

[Biodiversité Wallonie](#)

Site of high biological interest

La Fagne des Seeps (Chiny)

Sensitivity period:

Contact:

[Biodiversité Wallonie](#)

Site of high biological interest

Ruisseau de la Chapelle (Chiny)

Sensitivity period:

Contact:

[Biodiversité Wallonie](#)

Site of high biological interest

Vague des Gomhets (Chiny; Tintigny)

Sensitivity period:

Contact:

[Biodiversité Wallonie](#)

Site of high biological interest

Vague des Gomhets

Sensitivity period:

Contact:

[Biodiversité Wallonie](#)

Wetland of biological interest

Ruisseau du Moulin

Sensitivity period:

Contact:

[Biodiversité Wallonie](#)

State-owned nature reserve

Pres Husson

Sensitivity period:

Contact:

[Biodiversité Wallonie](#)

State-owned nature reserve

Vague des Gomhets

Sensitivity period:

Contact:

[Biodiversité Wallonie](#)

Accredited nature reserve