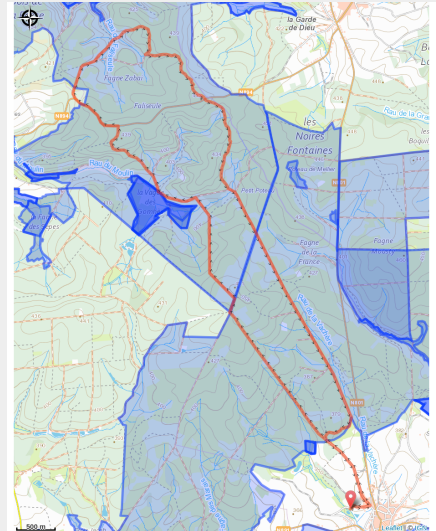
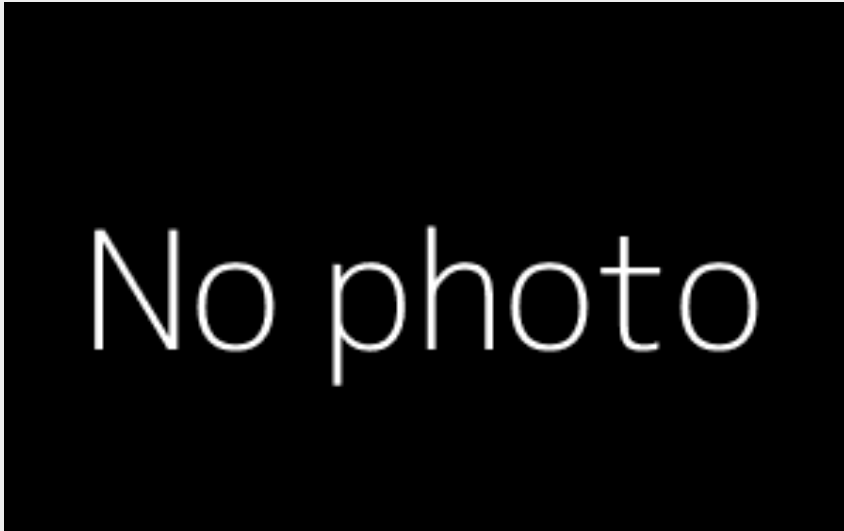


Vers la verte Ardenne



Useful information

Practice : Mountain bike

Length : 18.0 km

Trek ascent : 357 m


Difficulty : Medium

Type : Loop

Trek

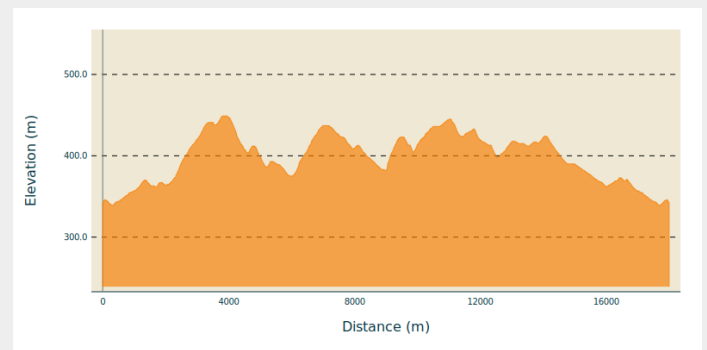
Departure : Voie du Tram, 6730 -
Rossignol

Arrival : Voie du Tram, 6730 - Rossignol

Markings :  Right-angled triangle -
Yellow

Cities : 1. Tintigny
2. Chiny

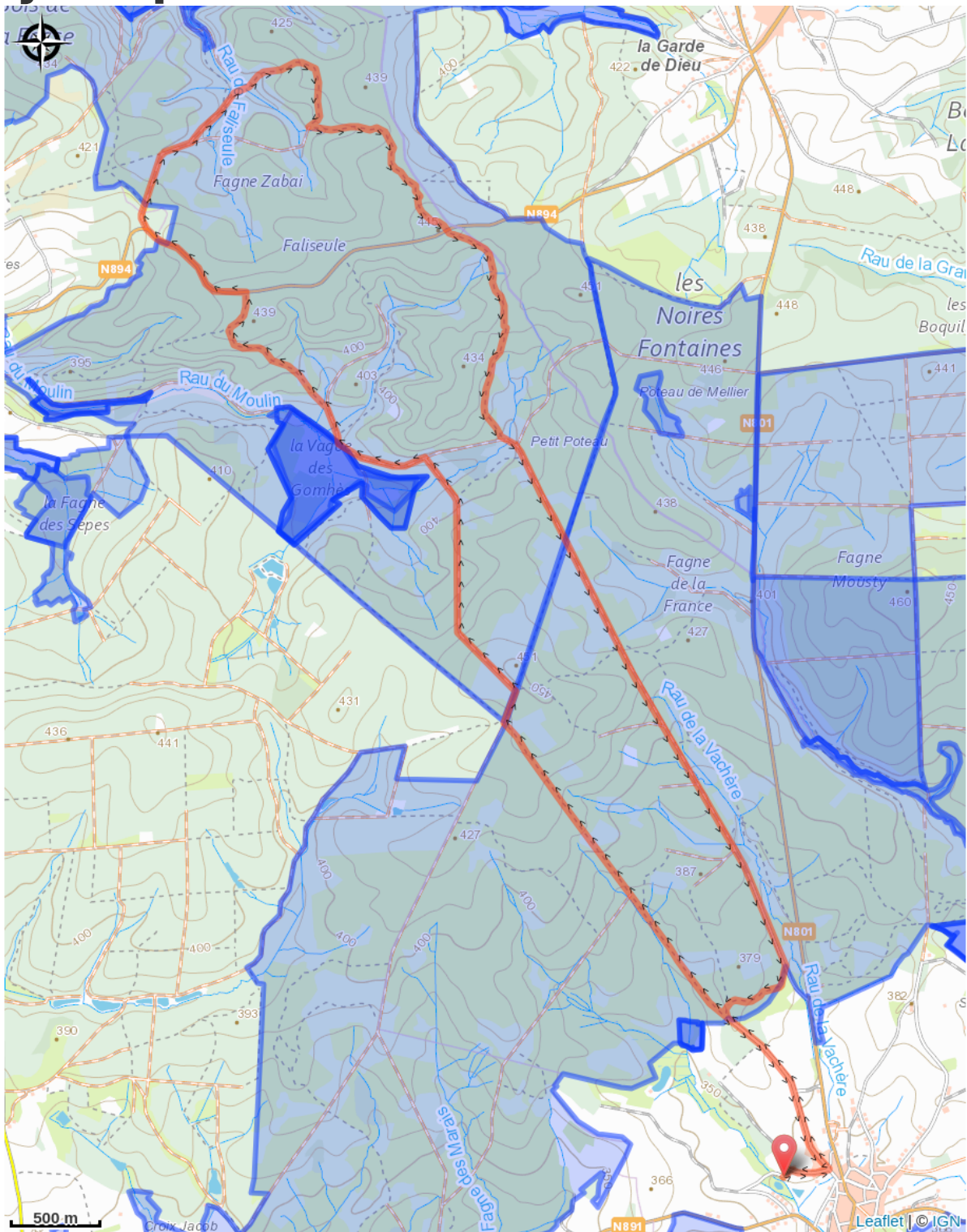
Altimetric profile



Min elevation 339 m Max elevation 449 m

Boucle à la découverte du village de Rossignol et de ses alentours.

On your path...



All useful information

Environmental sensitive areas

Along your trek, you will go through sensitive areas related to the presence of a specific species or environment. In these areas, an appropriate behaviour allows to contribute to their preservation. For detailed information, specific forms are accessible for each area.

Basse-Vierre

Sensitivity period:

Contact:

[Biodiversité Wallonie](#)



Bassin de la Semois entre Tintigny et Jamoigne

Sensitivity period:

Contact:

[Biodiversité Wallonie](#)



Ruisseau des Vieilles Roches et Ruisseau du Bochet Dumont (Chiny; Légglise; Tintigny)

Sensitivity period:

Contact:

[Biodiversité Wallonie](#)

Site of high biological interest

Vague des Gomhets (Chiny; Tintigny)

Sensitivity period:

Contact:

[Biodiversité Wallonie](#)

Site of high biological interest

Vague des Gomhets

Sensitivity period:

Contact:

[Biodiversité Wallonie](#)

Wetland of biological interest

Breuvanne

Sensitivity period:

Contact:

[Biodiversité Wallonie](#)

Accredited nature reserve

Vague des Gomhets

Sensitivity period:

Contact:

[Biodiversité Wallonie](#)

Accredited nature reserve

Vallee des Brunwirys

Sensitivity period:

Contact:

[Biodiversité Wallonie](#)

State-owned nature reserve

La Civanne autour de Rossignol (Habay; Léglise; Tintigny)

Sensitivity period:

Contact:

[Biodiversité Wallonie](#)

Site of high biological interest