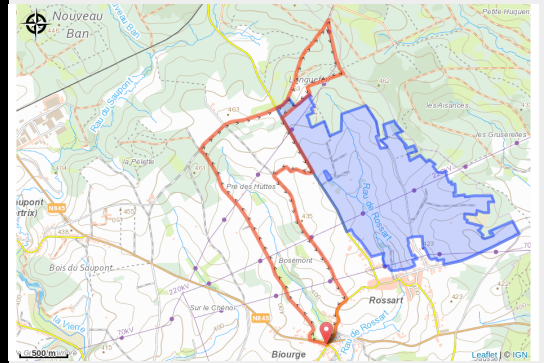


Cugnon 01



No photo



Useful information

Practice : On foot

Duration : 3 h 15

Length : 9.6 km

Trek ascent : 124 m

Difficulty : Medium

Type : Loop

Accessibility : Pushchair

Trek

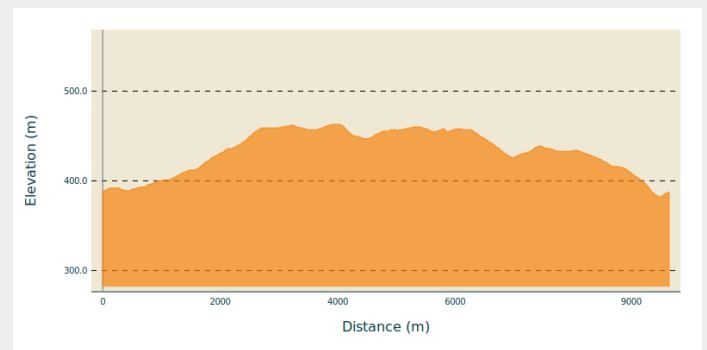
Departure : 6880 - Biourge

Arrival : 6880 - Bertrix

Markings : ■ N1 - Yellow

Cities : 1. Bertrix

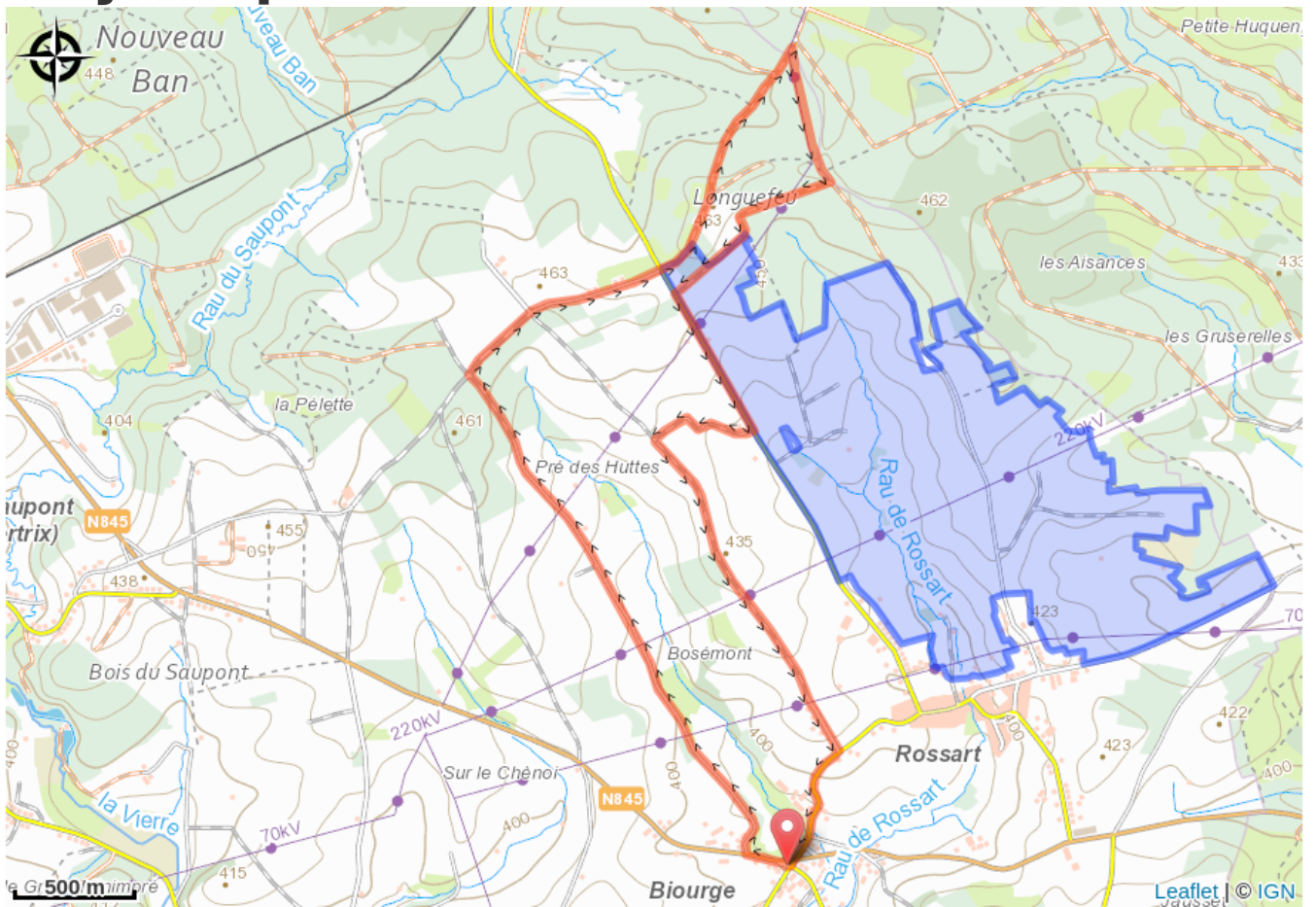
Altimetric profile



Min elevation 382 m Max elevation 463 m

An easy walk that takes you first to the agricultural heights of Rossart, then through the Huqueny forest. You will admire the beautiful Ardennes clay landscape. At the end of the walk you will find the listed Château Gerlache de Biourge.

On your path...



All useful information

Accessibility

Pushchair

Environmental sensitive areas

Along your trek, you will go through sensitive areas related to the presence of a specific species or environment. In these areas, an appropriate behaviour allows to contribute to their preservation. For detailed information, specific forms are accessible for each area.

Haute-Vierre

Sensitivity period:

Contact:

[Biodiversité Wallonie](#)

