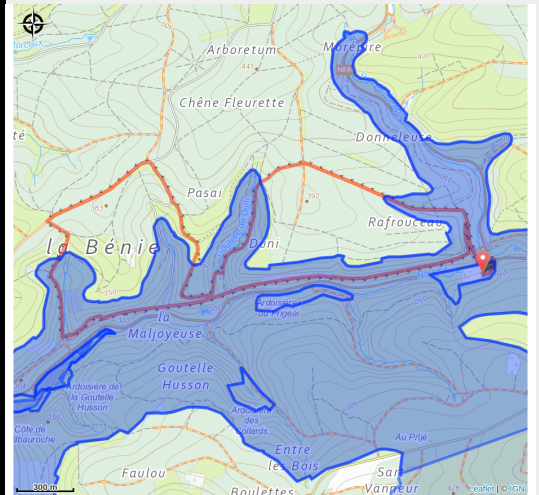


Morépire



Useful information

Practice : On foot

Duration : 2 h 30

Length : 7.8 km

Trek ascent : 215 m

Difficulty : Medium

Type : Loop

Trek

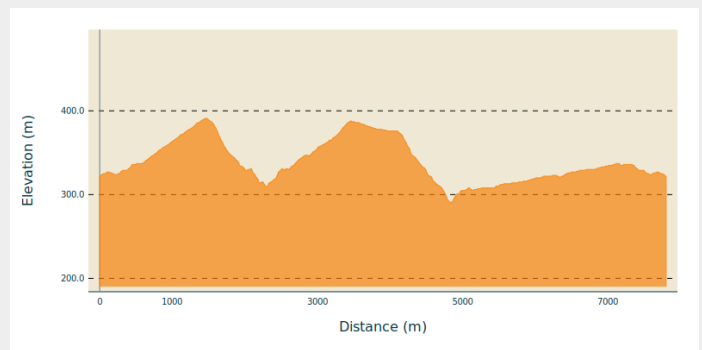
Departure : 6880 - Bertrix

Arrival : 6880 - Bertrix

Markings : ■ N1 - Red

Cities : 1. Bertrix
2. Herbeumont

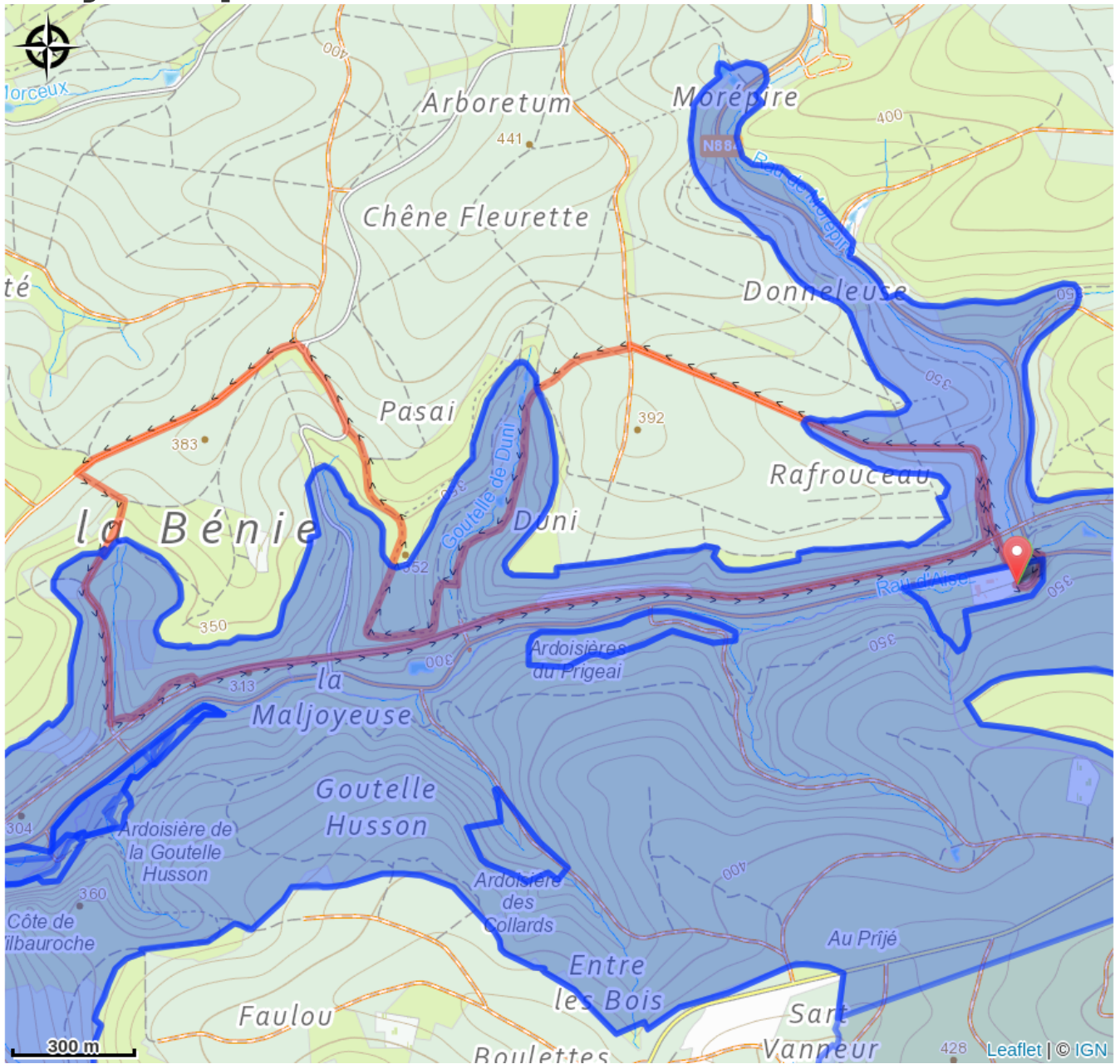
Altimetric profile



Min elevation 290 m Max elevation 391 m

A very beautiful walk, varied by its forests, paths and discoveries. You will be amazed by the sound of the brook and the passages in enchanting places, where you will discover magnificent schist rocks. The "Voie des Pierres qui parlent" (Way of the Talking Stones) will explain the history of slate in the region.

On your path...



All useful information

Environmental sensitive areas

Along your trek, you will go through sensitive areas related to the presence of a specific species or environment. In these areas, an appropriate behaviour allows to contribute to their preservation. For detailed information, specific forms are accessible for each area.

Bassin de la Semois de Florenville à Auby

Sensitivity period:

Contact:

[Biodiversité Wallonie](#)



Ardoisière de la Goutelle Husson (Bertrix; Herbeumont)

Sensitivity period:

Contact:

[Biodiversité Wallonie](#)

Site of high biological interest

Ardoisière de la Morépire (Bertrix)

Sensitivity period:

Contact:

[Biodiversité Wallonie](#)

Site of high biological interest

Ardoisières de la vallée d'Aise (Bertrix; Herbeumont)

Sensitivity period:

Contact:

[Biodiversité Wallonie](#)

Site of high biological interest

Ardoisière des Collards (Herbeumont)

Sensitivity period:

Contact:

[Biodiversité Wallonie](#)

Site of high biological interest

Ardoisières de Wilbauroche (Bertrix; Herbeumont)

Sensitivity period:

Contact:

[Biodiversité Wallonie](#)

Site of high biological interest

Ardoisières du Prigeai et Anciennes Carrières (Herbeumont)

Sensitivity period:

Contact:

[Biodiversité Wallonie](#)

Site of high biological interest

Vallee d'Aise et Suchamps

Sensitivity period:

Contact:

[Biodiversité Wallonie](#)

State-owned nature reserve