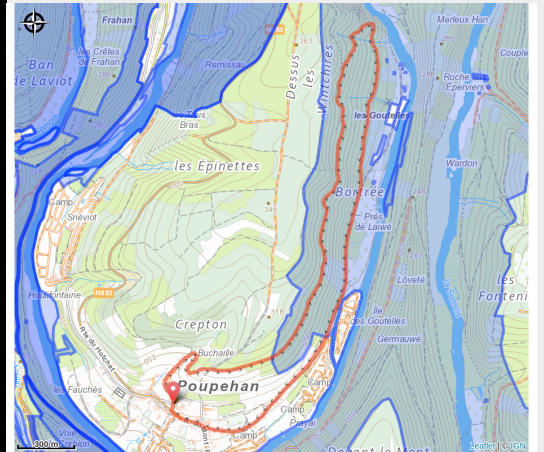


Les Falloises



Useful information

Practice : On foot

Duration : 1 h 45

Length : 6.0 km

Trek ascent : 174 m

Difficulty : Easy

Type : Loop

Trek

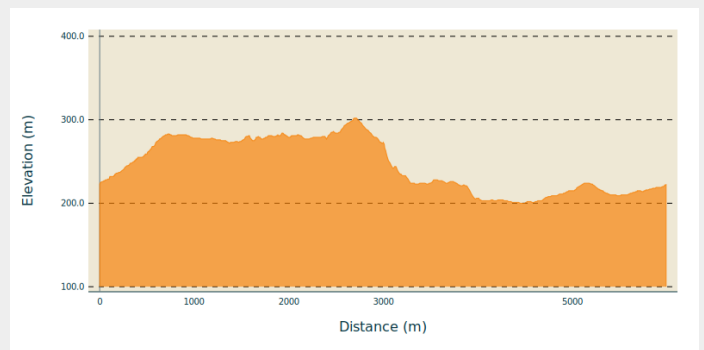
Departure : 6830 - Poupehan

Arrival : 6830 - Poupehan

Markings : ■ Horizontal rectangle - red

Cities : 1. Bouillon

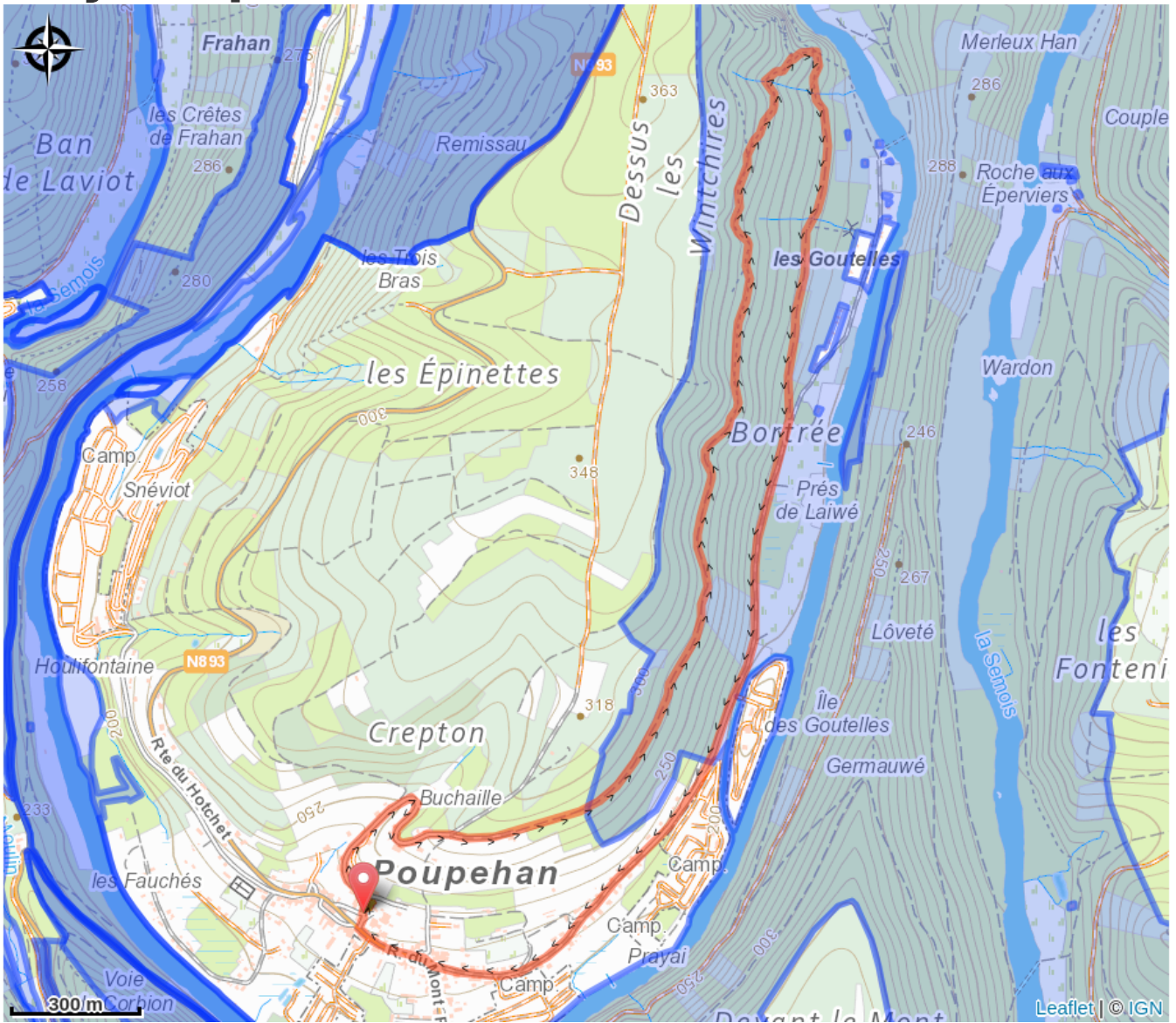
Altimetric profile



Min elevation 200 m Max elevation 302 m

This short walk in the forest leads you to a beautiful viewpoint on the famous Rochehaut ladder walk. Easy forest path with little difference in height.

On your path...



All useful information

Environmental sensitive areas

Along your trek, you will go through sensitive areas related to the presence of a specific species or environment. In these areas, an appropriate behaviour allows to contribute to their preservation. For detailed information, specific forms are accessible for each area.

Bassin de la Semois de Bouillon à Alle

Sensitivity period:

Contact:

[Biodiversité Wallonie](#)



Vallée de la Semois de Poupehan à Alle (Bouillon; Vresse-sur-Semois)

Sensitivity period:

Contact:

[Biodiversité Wallonie](#)

Site of high biological interest

Forêt alluviale des Wintchîres (Bouillon)

Sensitivity period:

Contact:

[Biodiversité Wallonie](#)

Site of high biological interest

Ile du camping du Vieux Moulin (Bouillon)

Sensitivity period:

Contact:

[Biodiversité Wallonie](#)

Site of high biological interest