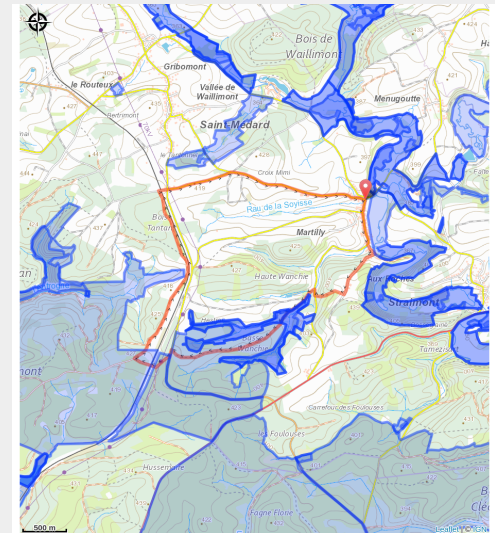


Les Castors



(MTBA)



Useful information

Practice : On foot

Duration : 2 h 30

Length : 9.3 km

Trek ascent : 164 m

Difficulty : Easy

Type : Loop

Accessibility : Pushchair

Trek

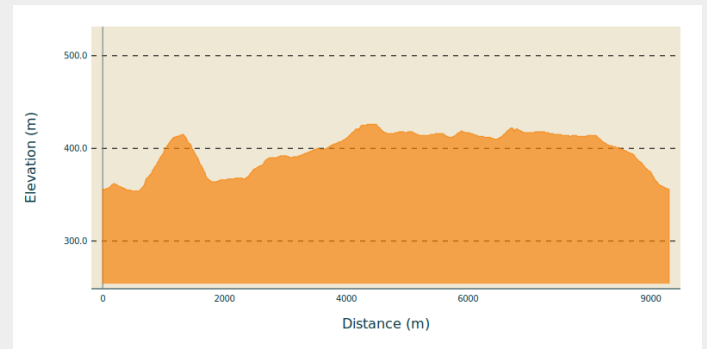
Departure : Rue du Centre, 6887 - Martilly

Arrival : Rue du Centre, 6887 - Martilly

Markings : ■ N1 - Red

Cities : 1. Herbeumont

Altimetric profile



Min elevation 354 m Max elevation 426 m

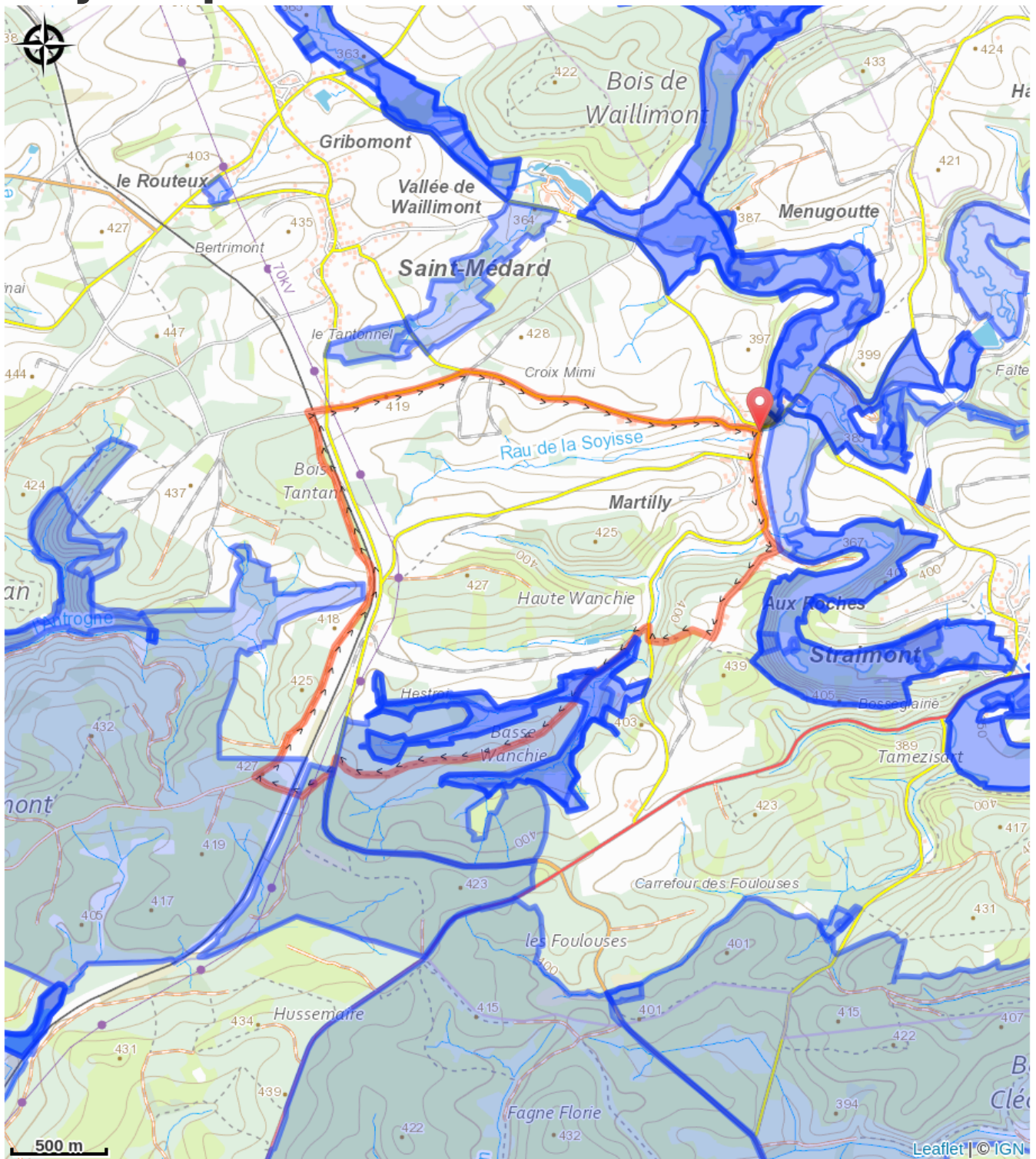
This walk, on easy paths, takes visitors to Martilly to discover the natural dams created by beavers and the nature reserve in the 'Fange de Straimont' valley.

It offers lovely views of the surrounding countryside and villages.

Picnic shelter available in the middle of the walk.

Pass through the village of Martilly, with its historic heritage: Casaquy house, church, chapel.

On your path...



All useful information

Accessibility

Pushchair

Environmental sensitive areas

Along your trek, you will go through sensitive areas related to the presence of a specific species or environment. In these areas, an appropriate behaviour allows to contribute to their preservation. For detailed information, specific forms are accessible for each area.

Basse-Vierre

Sensitivity period:

Contact:

[Biodiversité Wallonie](#)



Haute-Vierre

Sensitivity period:

Contact:

[Biodiversité Wallonie](#)



Bassin de la Semois de Florenville à Auby

Sensitivity period:

Contact:

[Biodiversité Wallonie](#)



Vallée de la haute Vierre (Bertrix; Herbeumont)

Sensitivity period:

Contact:

[Biodiversité Wallonie](#)

Site of high biological interest

Vallee de la Vierre

Sensitivity period:

Contact:

[Biodiversité Wallonie](#)

Accredited nature reserve

Basse-Wanchie (Herbeumont)

Sensitivity period:

Contact:

[Biodiversité Wallonie](#)

Site of high biological interest

Vallée de la basse Vierre (Chiny; Herbeumont; Neufchâteau)

Sensitivity period:

Contact:

[Biodiversité Wallonie](#)

Site of high biological interest

Vallon humide au sud de Saint-Médard (Herbeumont)

Sensitivity period:

Contact:

[Biodiversité Wallonie](#)

Site of high biological interest

Basse Wanchie

Sensitivity period:

Contact:

[Biodiversité Wallonie](#)

State-owned nature reserve