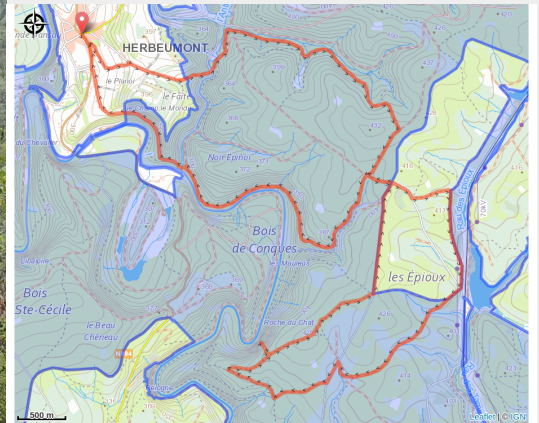


Forêt d'Herbeumont et Rocher du Chat



(MTBA)



Useful information

Practice : On foot

Duration : 5 h

Length : 20.2 km

Trek ascent : 498 m

Difficulty : Medium

Type : Loop

Trek

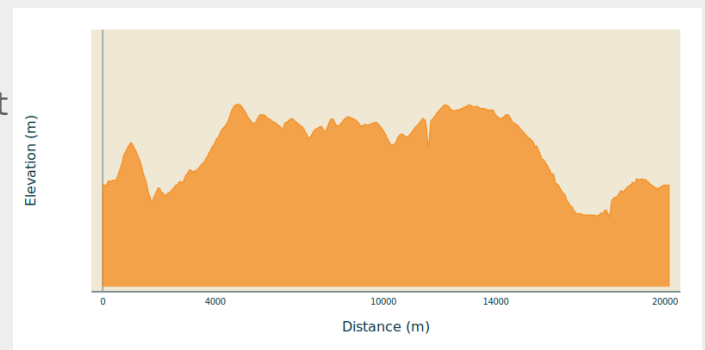
Departure : Grand-Place, 6887 - Herbeumont

Arrival : Grand-Place, 6887 - Herbeumont

Markings : ■ N1 - Green

Cities : 1. Herbeumont
2. Florenville

Altimetric profile

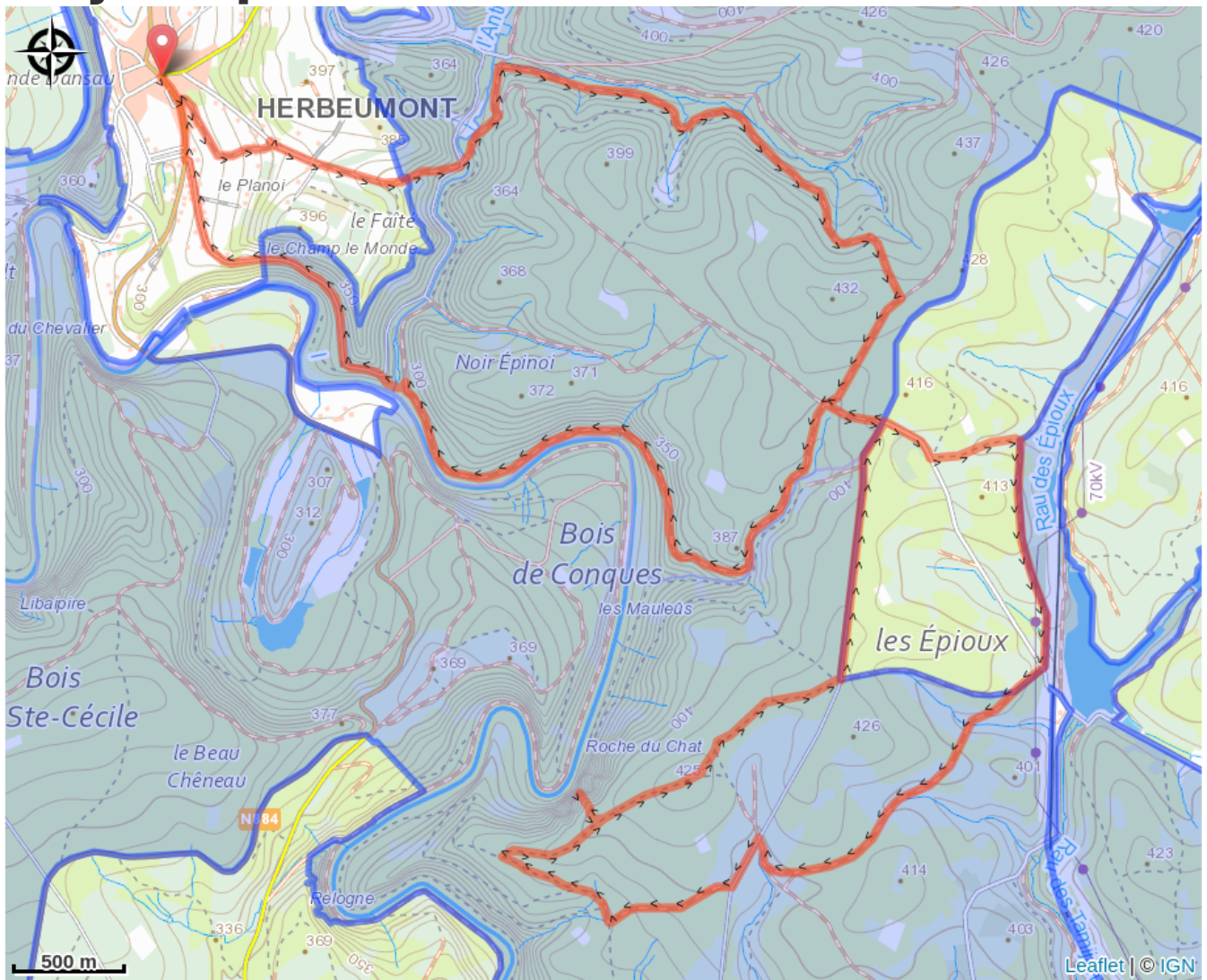


Min elevation 264 m Max elevation 426 m

A lovely, long forest walk. Set off to discover the Rocher du Chat viewpoint, passing by the château and Etang des Epioux (a short diversions of 500 m each way).

The whole walk takes you along beautiful, easy paths (only the access to the Rocher du chat viewpoint is a little steep). The return walk takes you along the Semois to the Songes path and the beach at the mouth of the Antrogne (barbecue, picnic).

On your path...



All useful information

Environmental sensitive areas

Along your trek, you will go through sensitive areas related to the presence of a specific species or environment. In these areas, an appropriate behaviour allows to contribute to their preservation. For detailed information, specific forms are accessible for each area.

Bassin de la Semois de Florenville à Auby

Sensitivity period:

Contact:

[Biodiversité Wallonie](#)



Château d'Herbeumont (Herbeumont)

Sensitivity period:

Contact:

[Biodiversité Wallonie](#)

Site of high biological interest

Vallée de l'Antrogne (Herbeumont)

Sensitivity period:

Contact:

[Biodiversité Wallonie](#)

Site of high biological interest

Chateau d'Herbeumont

Sensitivity period:

Contact:

[Biodiversité Wallonie](#)

State-owned nature reserve

Etangs des Epioux

Sensitivity period:

Contact:

[Biodiversité Wallonie](#)

State-owned nature reserve

Vallee de l'Antrogne et affluents

Sensitivity period:

Contact:

[Biodiversité Wallonie](#)

State-owned nature reserve

Étang du Fond de Chassepierre (Florenville)

Sensitivity period:

Contact:

[Biodiversité Wallonie](#)

Site of high biological interest

Etangs de Conques (Florenville)

Sensitivity period:

Contact:

[Biodiversité Wallonie](#)

Site of high biological interest

Forêt alluviale de Relogne (Florenville;)

Sensitivity period:

Contact:

[Biodiversité Wallonie](#)

Site of high biological interest

Forêt alluviale du Bois de Conques (Florenville)

Sensitivity period:

Contact:

[Biodiversité Wallonie](#)

Site of high biological interest

Grand étang des Épioux (Florenville)

Sensitivity period:

Contact:

[Biodiversité Wallonie](#)

Site of high biological interest