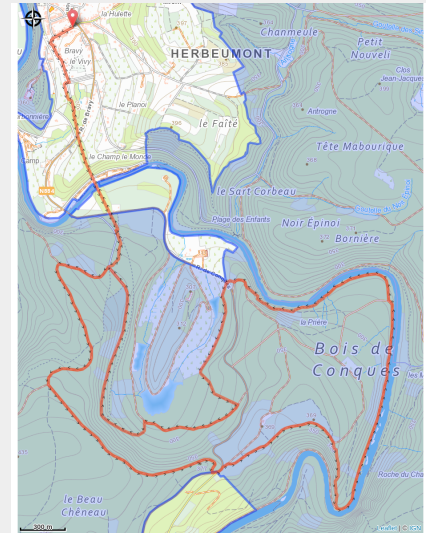


La Grotte des Moines via le chemin des Fileuses



(Libre de droit)



Useful information

Practice : On foot

Duration : 4 h

Length : 14.7 km

Trek ascent : 443 m

Difficulty : Medium

Type : Loop

Trek

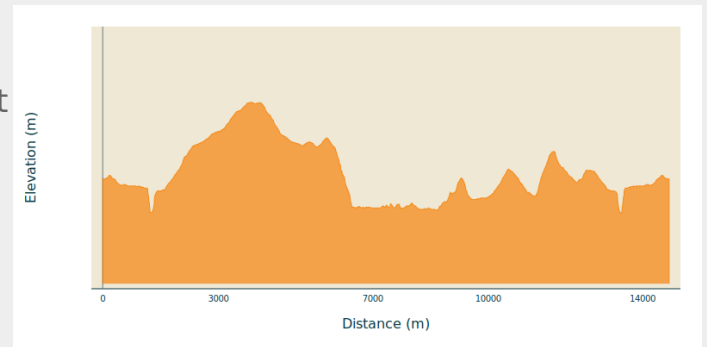
Departure : Grand-Place, 6887 - Herbeumont

Arrival : Grand-Place, 6887 - Herbeumont

Markings : ■ N1 - Red

Cities : 1. Herbeumont
2. Florenville

Altimetric profile



Min elevation 262 m Max elevation 418 m

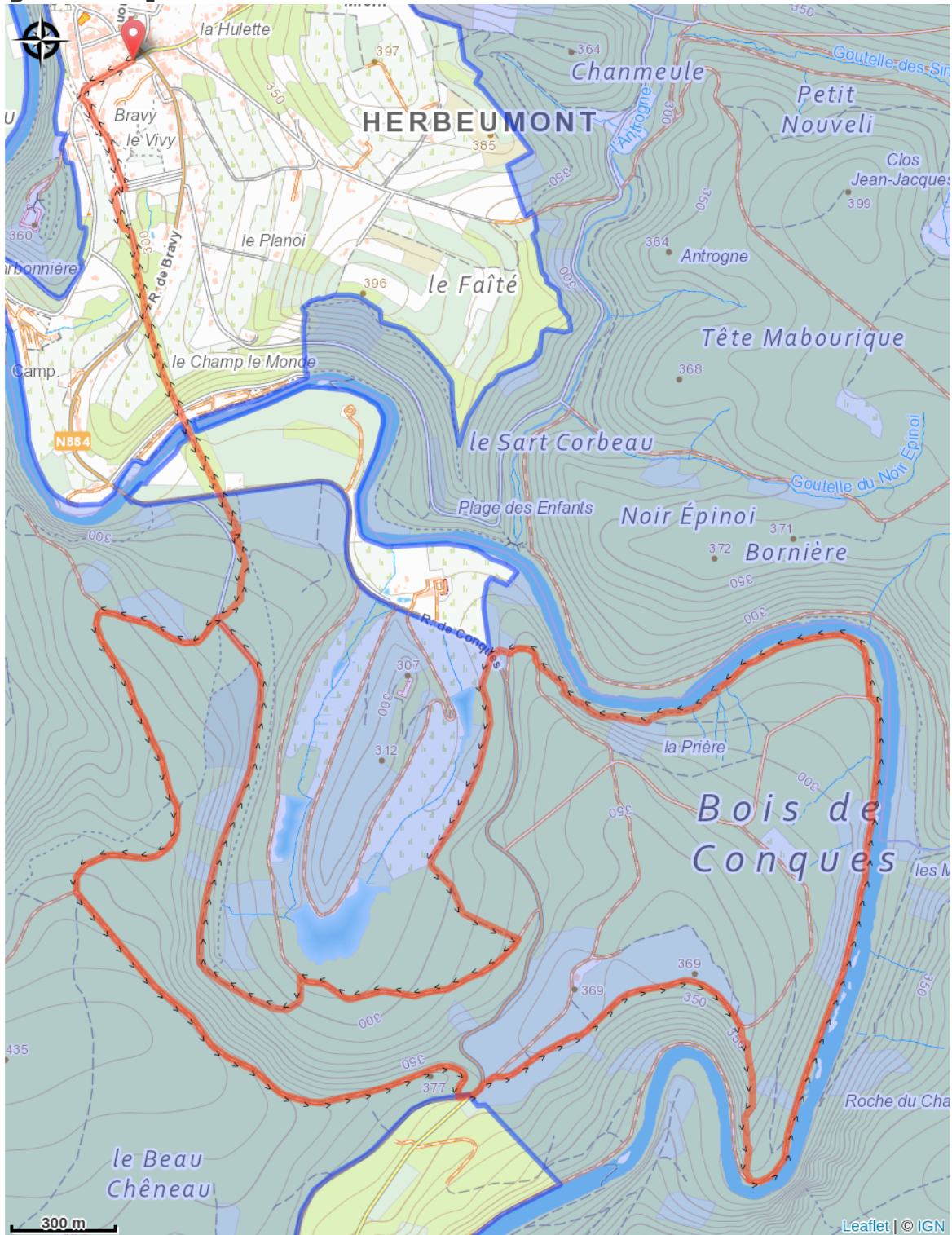
A spectacular ride starting from the village centre. It takes you to the motor home area and across the recently renovated Conques viaduct. This will give you a breathtaking view of the Semois.

You then continue through the forest on pretty paths to a viewpoint overlooking the Etang des Moines. After descending again, you reach a steep, technical path, but the reward is not far away, as it offers a magnificent view of the Semois.

The path continues along the river on the hillside before reaching the sumptuous Grotte Notre-Dame des Moines.

The gravel path takes you back to the viaduct and the centre of Herbeumont.

On your path...



All useful information

Environmental sensitive areas

Along your trek, you will go through sensitive areas related to the presence of a specific species or environment. In these areas, an appropriate behaviour allows to contribute to their preservation. For detailed information, specific forms are accessible for each area.

Bassin de la Semois de Florenville à Auby

Sensitivity period:

Contact:

[Biodiversité Wallonie](#)



Château d'Herbeumont (Herbeumont)

Sensitivity period:

Contact:

[Biodiversité Wallonie](#)

Site of high biological interest

Méandre du Tombeau du Chevalier (Herbeumont)

Sensitivity period:

Contact:

[Biodiversité Wallonie](#)

Site of high biological interest

Chateau d'Herbeumont

Sensitivity period:

Contact:

[Biodiversité Wallonie](#)

State-owned nature reserve

Etangs de Conques (Florenville)

Sensitivity period:

Contact:

[Biodiversité Wallonie](#)

Site of high biological interest

Forêt alluviale de Relogne (Florenville;)

Sensitivity period:

Contact:

[Biodiversité Wallonie](#)

Site of high biological interest

Forêt alluviale du Bois de Conques (Florenville)

Sensitivity period:

Contact:

[Biodiversité Wallonie](#)

Site of high biological interest