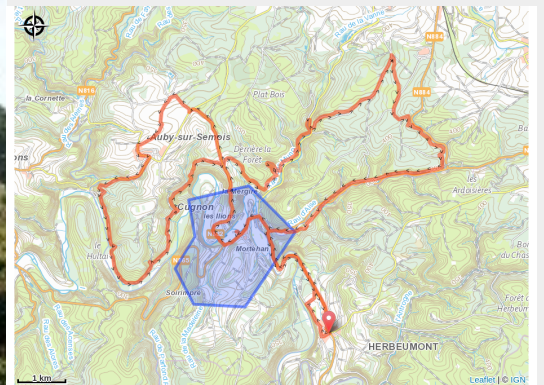


# Gravel « Patrimoine et forêts au nord d'Herbeumont ».



(Christel François)



## Useful information

Practice : Gravel

Duration : 3 h

Length : 38.0 km

Trek ascent : 854 m

Difficulty : Difficult

Type : Loop

# Trek

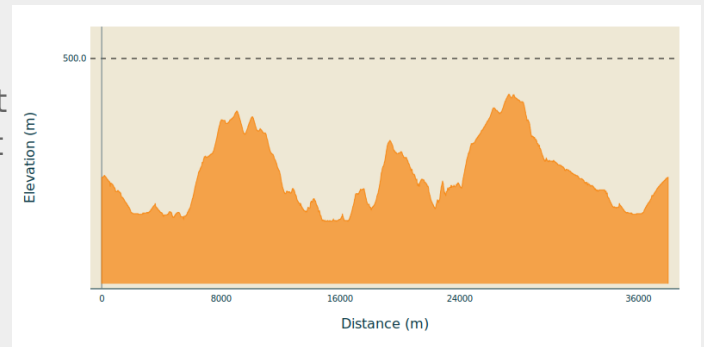
**Departure** : Grand-Place, 6887 - Herbeumont

**Arrival** : Grand-Place, 6887 - Herbeumont

**Markings** : 🚧 N3-GRVL (Gravel) - Difficult

**Cities** : 1. Herbeumont  
2. Bertrix

## Altimetric profile



Min elevation 240 m Max elevation 443 m

Departure from Herbeumont. Take the main road along the Semois as far as Mortehan, passing by a listed ancient cemetery on the banks of the Semois. Continue on to Cugnon and Auby along pretty country lanes offering breathtaking views.

You then head into pretty forests dotted with streams and idyllic spots until you reach the Grotte Saint Remacle, where you can make a stop.

The route continues towards Bertrix, where you will pass by the Arboretum.

There are then some lovely woodland paths as far as the old railway line.

You will then reach Herbeumont along the banks of the Semois.



# All useful information

# Environmental sensitive areas

Along your trek, you will go through sensitive areas related to the presence of a specific species or environment. In these areas, an appropriate behaviour allows to contribute to their preservation. For detailed information, specific forms are accessible for each area.

## **Zone\_regl1**

Sensitivity period: May, June, July, August

Contact:

Contact zone règlementaire 1

Description zone règlementaire 1