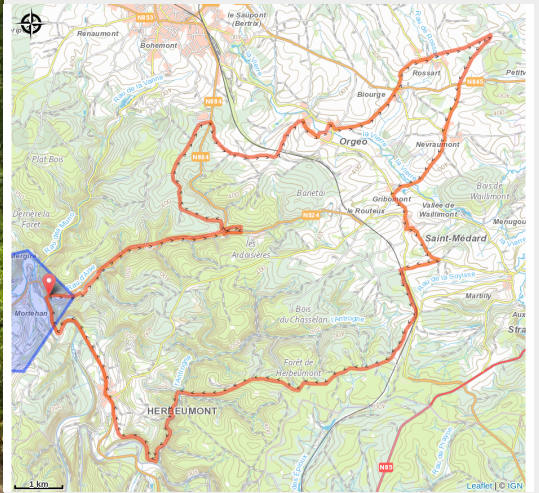


Circuit Histoire 3 - Châteaux (Bertrix et Herbeumont)



(MTBA)



Useful information

Practice : Mountain bike

Length : 38.8 km

Trek ascent : 634 m

Difficulty : Easy

Type : Loop

Trek

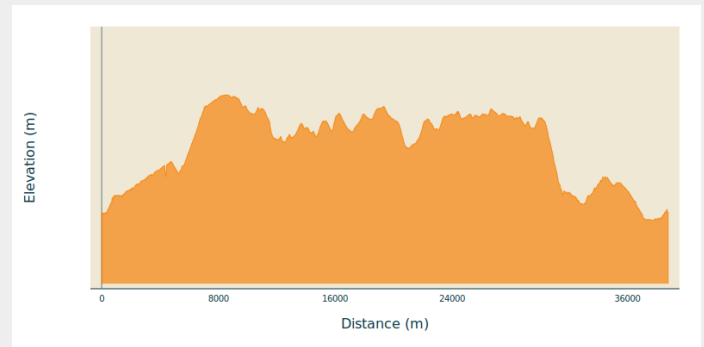
Departure : 6887 - Herbeumont

Arrival : 6887 - Herbeumont

Markings : No signage

Cities : 1. Herbeumont
2. Bertrix

Altimetric profile

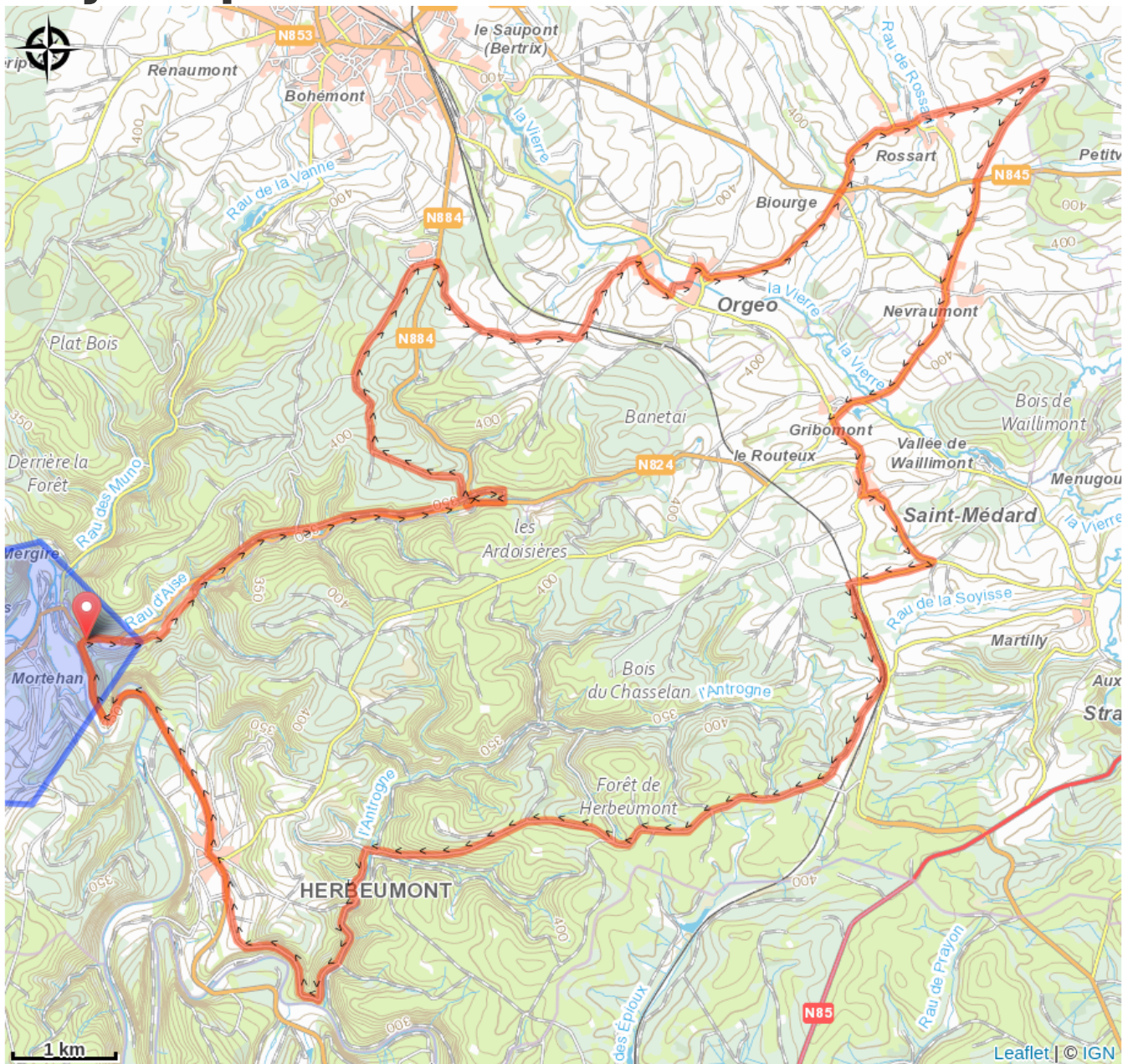


Min elevation 251 m Max elevation 448 m

Points noeud: 70-43-40-21-34-52-53-80-70

- Discover this varied route through unspoiled nature, taking you along peaceful forest paths and open landscapes with wide-reaching views. Make a short detour to visit the castle of Herbeumont, follow part of the old railway line on the “speaking stones” trail, and be surprised by grazing cattle in a protected area.
- The circuit is 39 kilometres long and starts in Herbeumont. The first three kilometres follow the road, after which the route continues almost entirely on quiet forest and country tracks. Several sections are unpaved, but the limited elevation gain makes it perfectly suited for all-terrain bikes.
- Along the way you’ll find many scenic picnic spots. For a meal or refreshment, you can stop in Herbeumont. A free information leaflet with more background is available at the tourist offices.

On your path...



All useful information

Environmental sensitive areas

Along your trek, you will go through sensitive areas related to the presence of a specific species or environment. In these areas, an appropriate behaviour allows to contribute to their preservation. For detailed information, specific forms are accessible for each area.

Zone_regl1

Sensitivity period: May, June, July, August

Contact:

Contact zone règlementaire 1

Description zone règlementaire 1