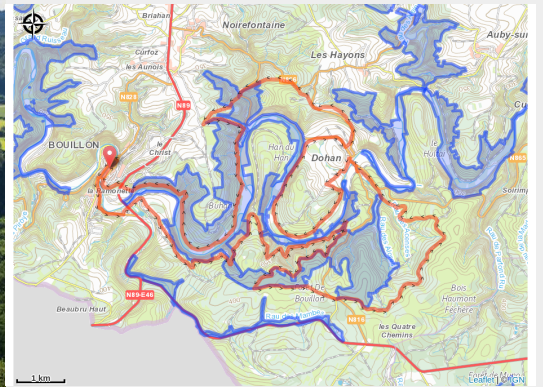


# VTT Vresse-Sur-Semois 40 km



(closen)



## Useful information

---

Practice : Mountain bike

---

Length : 41.9 km

---

Trek ascent : 1004 m

---

Type : Loop

# Trek

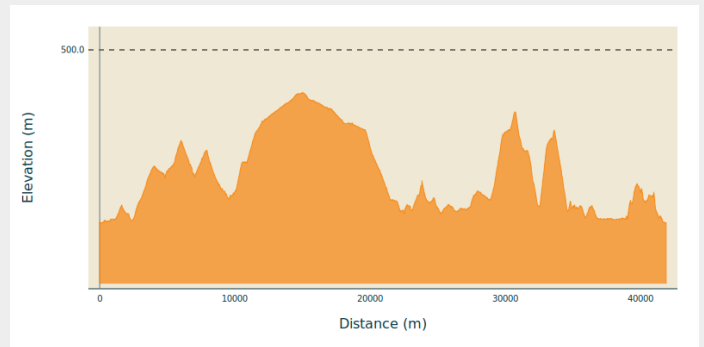
**Departure** : 5550 - Vresse-sur-Semois

**Arrival** : 5550 - Vresse-sur-Semois

**Markings** : No signage

**Cities** : 1. Bouillon

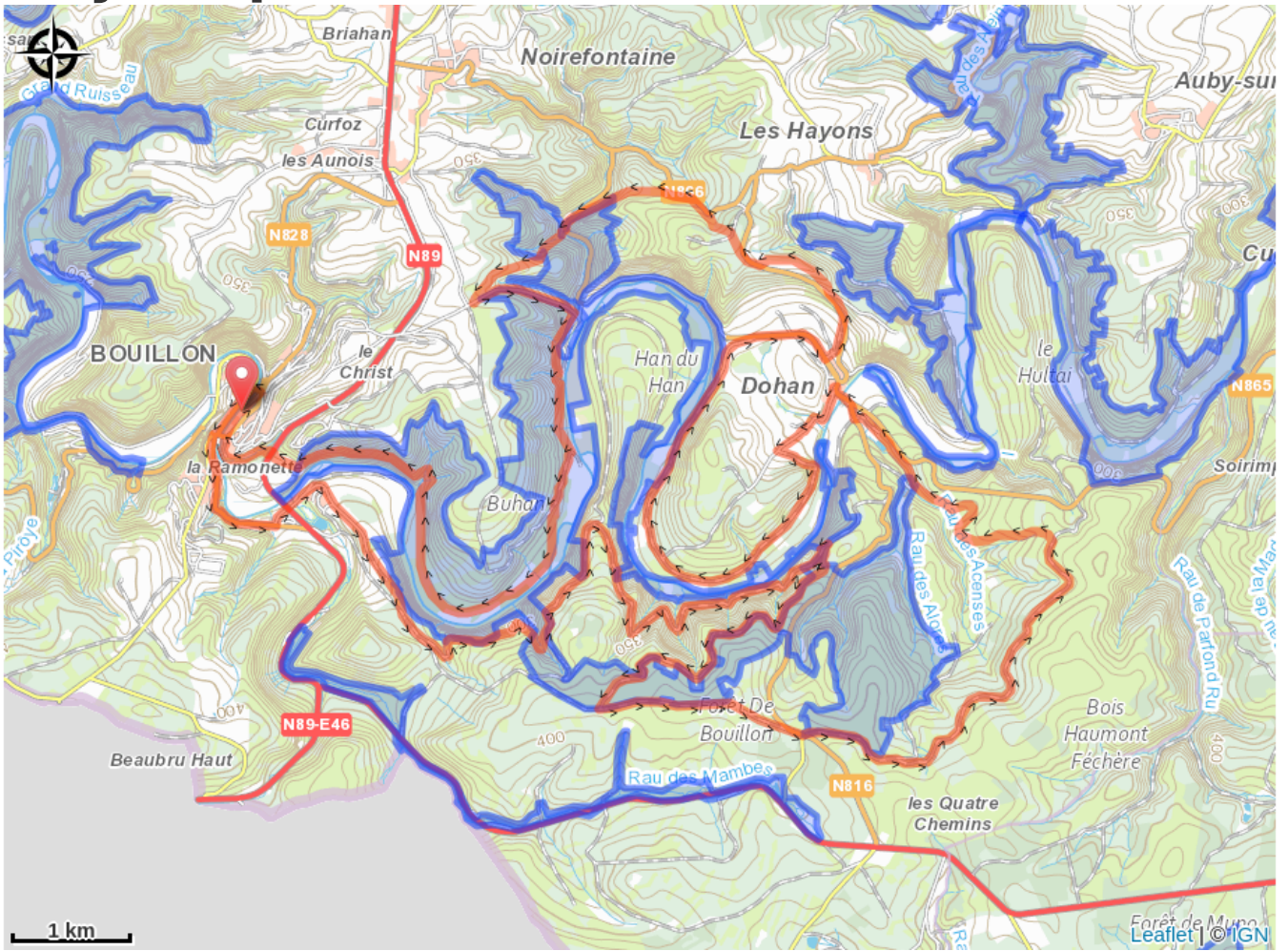
## Altimetric profile



Min elevation 216 m Max elevation 430 m

Parcours VTT Vresse 40 km non balisé.

# On your path...



# All useful information

# Environmental sensitive areas

Along your trek, you will go through sensitive areas related to the presence of a specific species or environment. In these areas, an appropriate behaviour allows to contribute to their preservation. For detailed information, specific forms are accessible for each area.

## **Bassin de la Semois du Maka à Bouillon**

Sensitivity period:

Contact:

[Biodiversité Wallonie](#)



### **Forêt alluviale du Pré des Moines (Bouillon)**

Sensitivity period:

Contact:

[Biodiversité Wallonie](#)

Site of high biological interest

### **Aulnaie du Fainire (Bouillon)**

Sensitivity period:

Contact:

[Biodiversité Wallonie](#)

Site of high biological interest

### **Château-fort de Bouillon (Bouillon)**

Sensitivity period:

Contact:

[Biodiversité Wallonie](#)

Site of high biological interest

### **Forêt alluviale du Champ Touaux (Bouillon)**

Sensitivity period:

Contact:

[Biodiversité Wallonie](#)

Site of high biological interest

### **Ile Chevray et Roche de la Dampirée (Bouillon)**

Sensitivity period:

Contact:

[Biodiversité Wallonie](#)

Site of high biological interest

### **Ile de Locailou (Bouillon)**

Sensitivity period:

Contact:

[Biodiversité Wallonie](#)

Site of high biological interest

### **Iles de Grimouti (Bouillon)**

Sensitivity period:

Contact:

[Biodiversité Wallonie](#)

Site of high biological interest

### **Iles Stassart (Bouillon)**

Sensitivity period:

Contact:

[Biodiversité Wallonie](#)

Site of high biological interest

### **La Platinerie (Bouillon)**

Sensitivity period:

Contact:

[Biodiversité Wallonie](#)

Site of high biological interest

### **Noüe de l'île du Grand Buty (Bouillon)**

Sensitivity period:

Contact:

[Biodiversité Wallonie](#)

Site of high biological interest

### **Noüe de Morsehan (Bouillon)**

Sensitivity period:

Contact:

[Biodiversité Wallonie](#)

Site of high biological interest

### **Pré Lamquin (Bouillon)**

Sensitivity period:

Contact:

[Biodiversité Wallonie](#)

Site of high biological interest

### **Ruisseau du Pré Magin (Bouillon)**

Sensitivity period:

Contact:

[Biodiversité Wallonie](#)

Site of high biological interest

### **Grand Buty (Noüe de l'île du)**

Sensitivity period:

Contact:

[Biodiversité Wallonie](#)

Wetland of biological interest

## **Basse Semois Orientale**

Sensitivity period:

Contact:

[Biodiversité Wallonie](#)

Accredited nature reserve

## **Platinerie (La)**

Sensitivity period:

Contact:

[Biodiversité Wallonie](#)

State-owned nature reserve