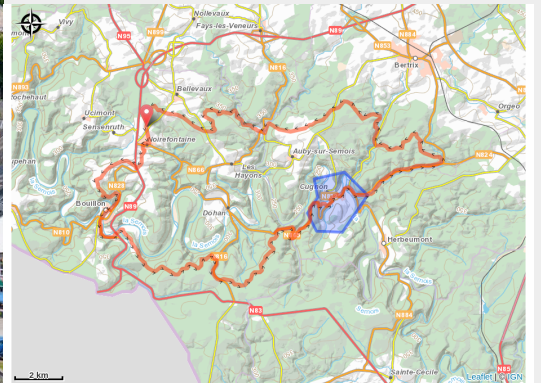


# Gravel Bouillon Bertrix



(d closen)



## Useful information

---

Practice : Gravel

---

Length : 52.5 km

---

Trek ascent : 1045 m

---

Type : Loop

# Trek

**Departure** : 6830 - Bouillon

**Arrival** : 6830 - Bouillon

**Markings** : No signage

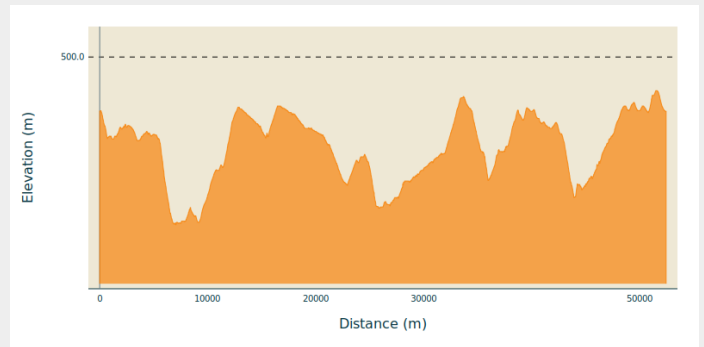
**Cities** : 1. Bouillon

2. Bertrix

3. Herbeumont

4. Paliseul

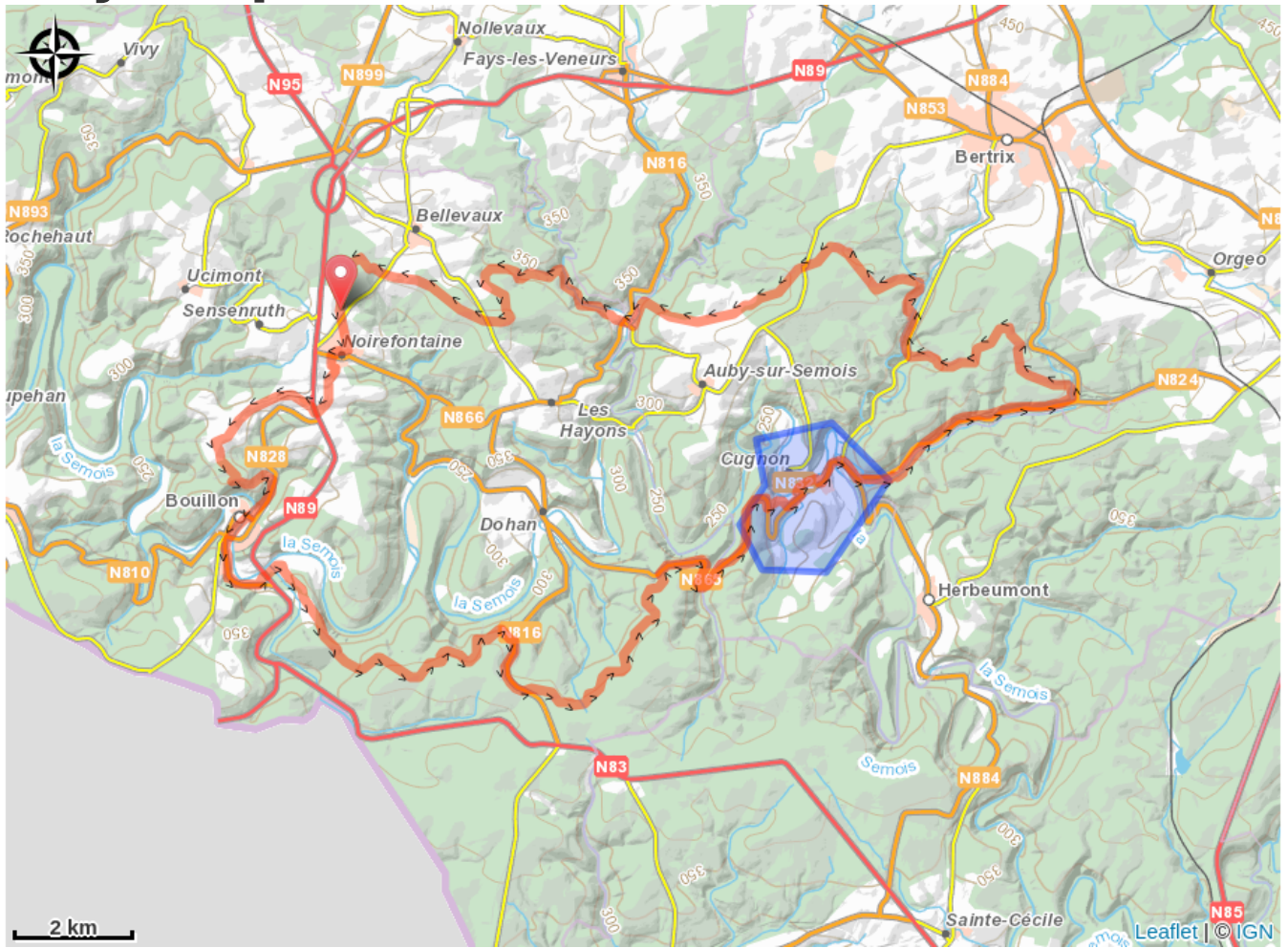
## Altimetric profile



Min elevation 216 m Max elevation 443 m

Gravel Bouillon Bertrix

# On your path...



# All useful information

# Environmental sensitive areas

Along your trek, you will go through sensitive areas related to the presence of a specific species or environment. In these areas, an appropriate behaviour allows to contribute to their preservation. For detailed information, specific forms are accessible for each area.

## **Zone\_regl1**

Sensitivity period: May, June, July, August

Contact:

Contact zone règlementaire 1

Description zone règlementaire 1