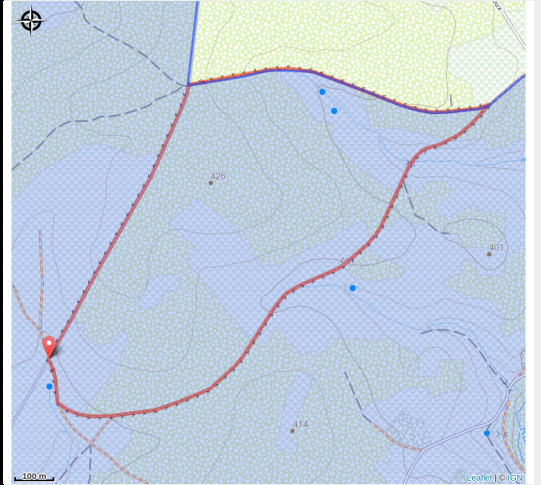


Les Recours



No photo



Useful information

Practice : On foot

Length : 3.4 km

Trek ascent : 63 m

Difficulty : Easy

Type : Loop

Trek

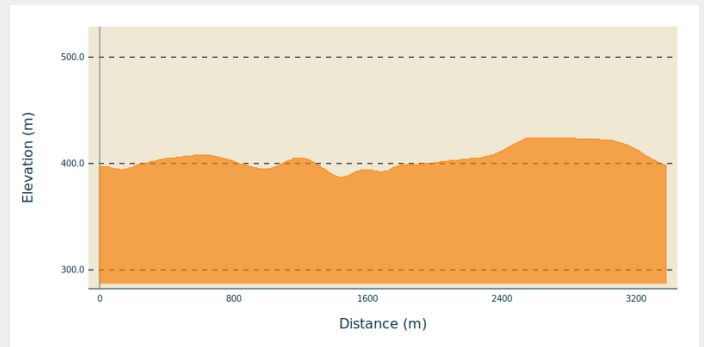
Departure : 6824 - Chassepierre

Arrival : 6824 - Chassepierre

Markings : ■ N1 - Blue

Cities : 1. Florenville

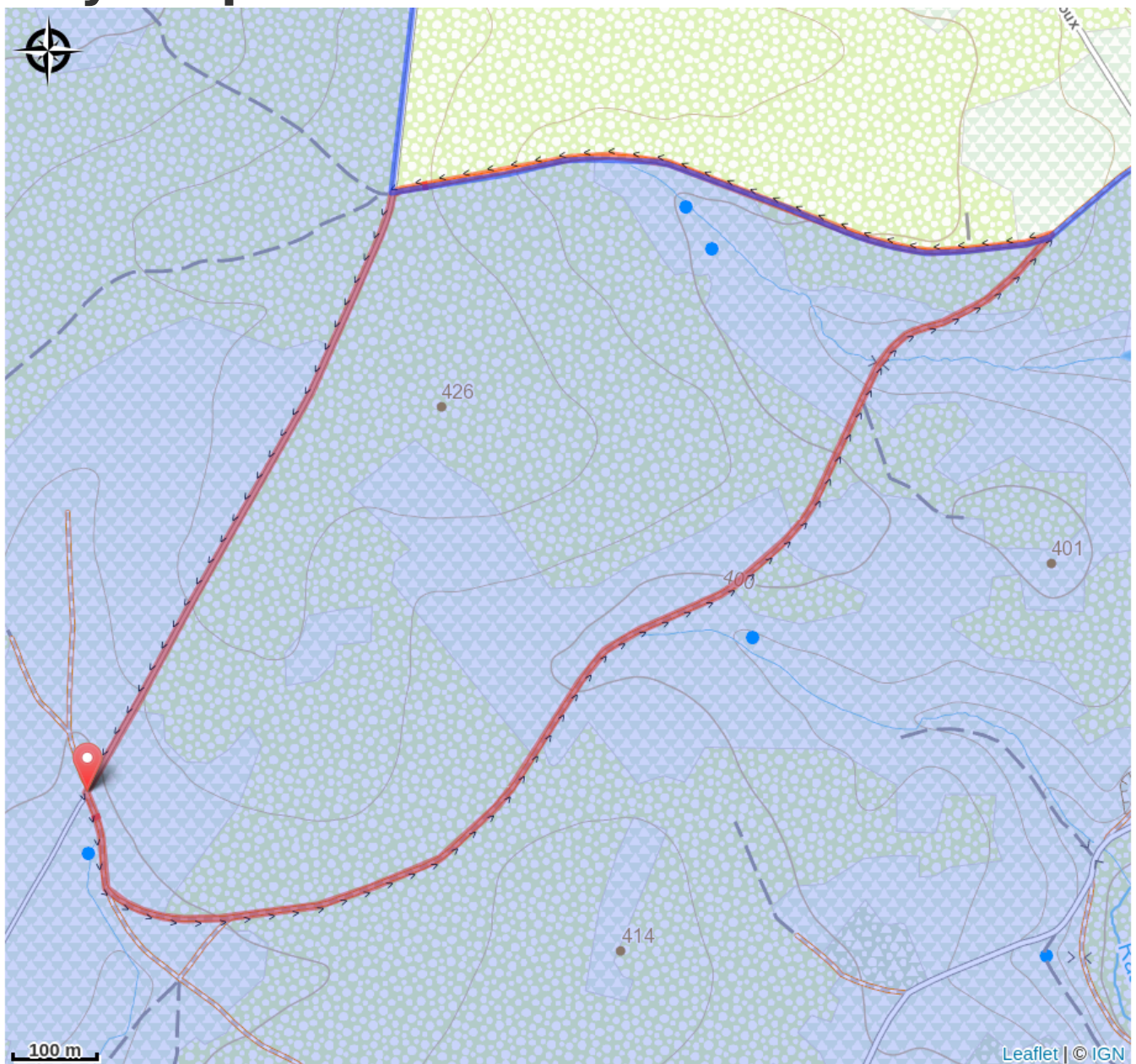
Altimetric profile



Min elevation 387 m Max elevation 424 m

Aux Épioux, cette courte promenade forestière longe un ruisseau dans une ambiance calme et apaisante.

On your path...



All useful information

Environmental sensitive areas

Along your trek, you will go through sensitive areas related to the presence of a specific species or environment. In these areas, an appropriate behaviour allows to contribute to their preservation. For detailed information, specific forms are accessible for each area.

Bassin de la Semois de Florenville à Auby

Sensitivity period:

Contact:

[Biodiversité Wallonie](#)



Grand étang des Épioux (Florenville)

Sensitivity period:

Contact:

[Biodiversité Wallonie](#)

Site of high biological interest