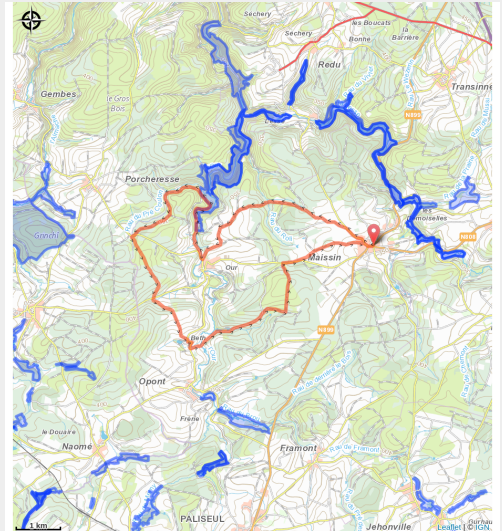


# Maissin : circuit VTT jaune



## Useful information

---

Practice : Mountain bike

---

Duration : 2 h

---

Length : 19.1 km

---

Trek ascent : 366 m

---

Difficulty : Medium

---

Type : Loop

# Trek

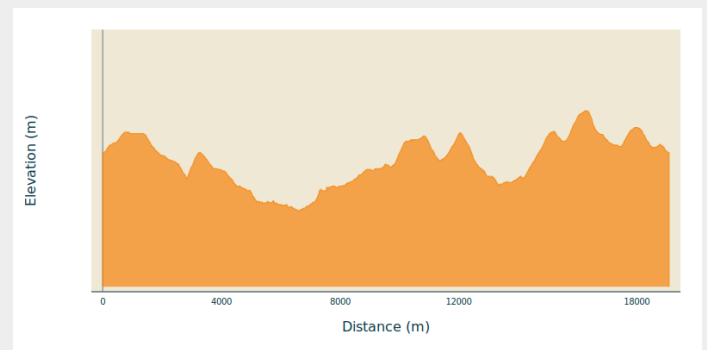
**Departure** : 6852 - Maissin

**Arrival** : 6852 - Maissin

**Markings** : 🚩 N3 - Yellow

**Cities** : 1. Paliseul

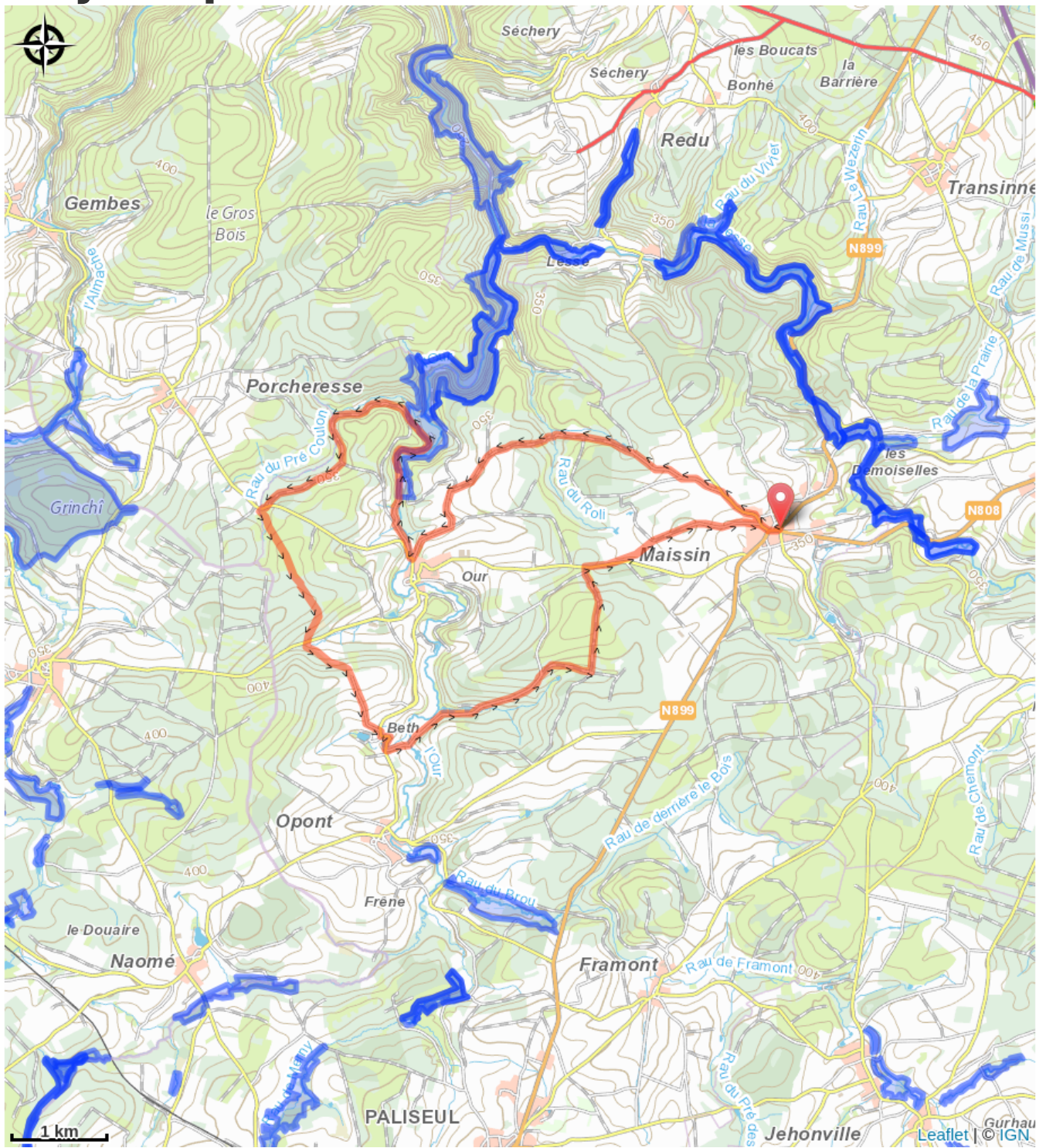
## Altimetric profile



Min elevation 294 m Max elevation 425 m

This is a great mountain bike outing that will allow you to discover some of the heritage and history (Franco-German military cemetery; the Abbeys, the old Moulin d'Our) of the commune of Paliseul, as well as offering some beautiful sections along streams and in the forest.

# On your path...



# All useful information

# Environmental sensitive areas

Along your trek, you will go through sensitive areas related to the presence of a specific species or environment. In these areas, an appropriate behaviour allows to contribute to their preservation. For detailed information, specific forms are accessible for each area.

## Haute-Lesse

Sensitivity period:

Contact:

[Biodiversité Wallonie](#)



### **Vallée de la Lesse ardennaise de Recogne à Halma (Daverdisse; Libin; Paliseul)**

Sensitivity period:

Contact:

[Biodiversité Wallonie](#)

Site of high biological interest