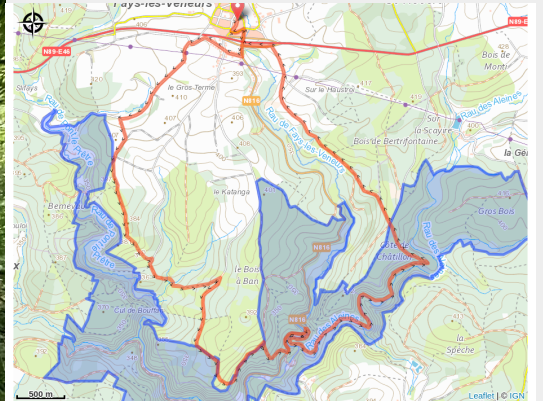


Fays-les-Veneurs : circuit jaune



(MTPBA)



Useful information

Practice : Mountain bike

Duration : 2 h

Length : 14.9 km

Trek ascent : 341 m

Difficulty : Medium

Type : Loop

Trek

Departure : 6856 - Fays-les-Veneurs

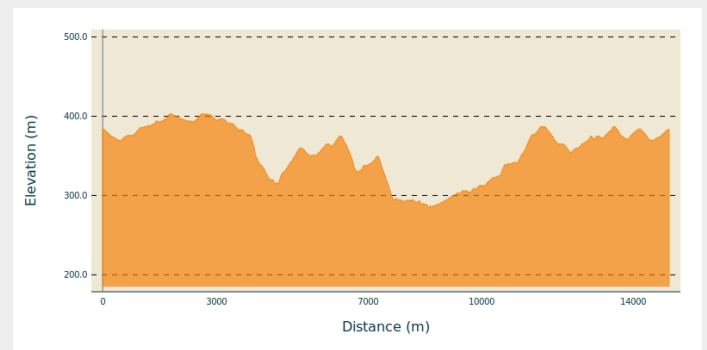
Arrival : 6856 - Fays-les-Veneurs

Markings : 🚩 N3 - Yellow

Cities : 1. Paliseul

2. Bertrix

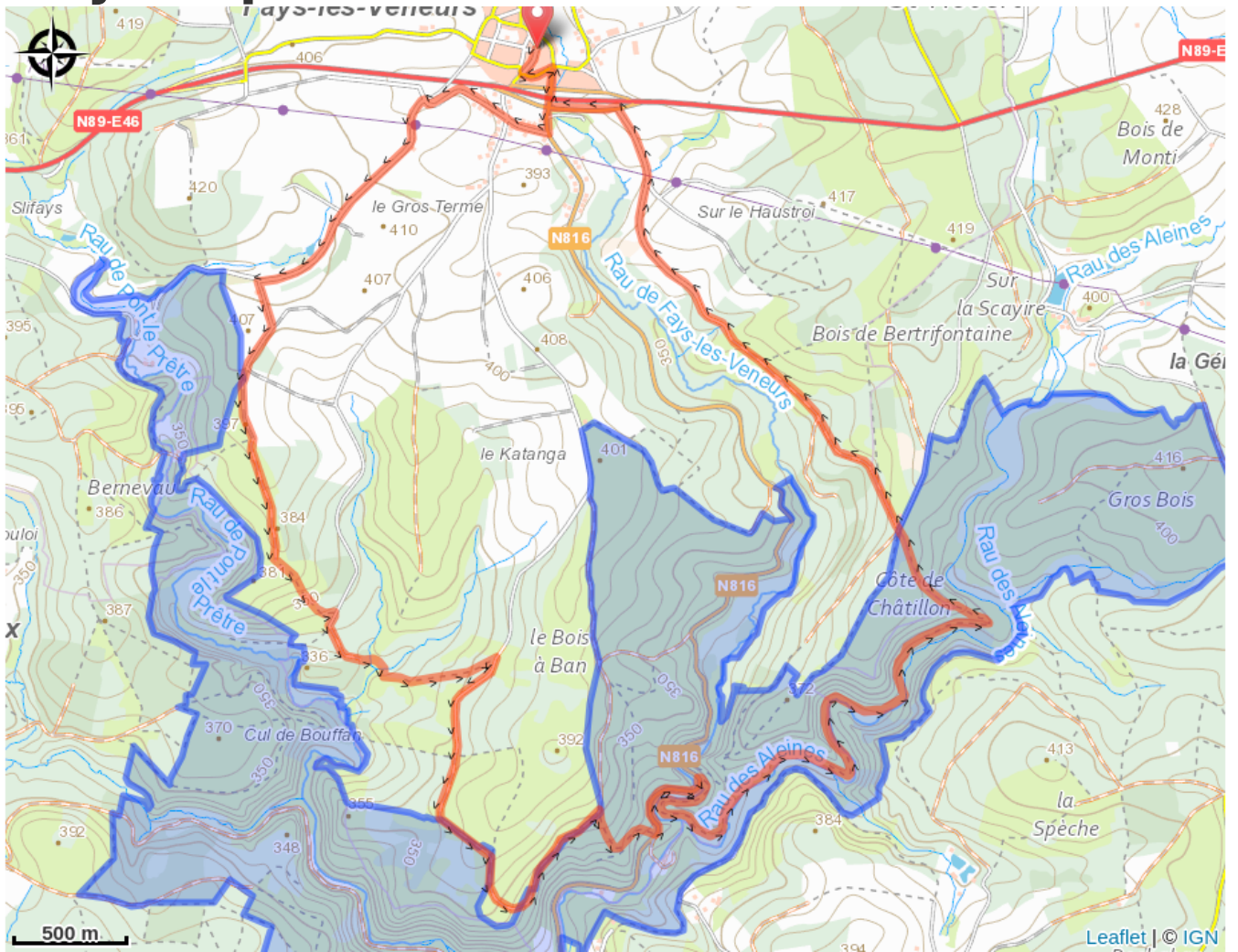
Altimetric profile



Min elevation 285 m Max elevation 403 m

A beautiful mountain bike route with a variety of landscapes: open countryside, deciduous and coniferous forests, and a sublime second part of the route along the Fays-les-Veneurs stream and then along the Aleines stream.

On your path...



All useful information

Environmental sensitive areas

Along your trek, you will go through sensitive areas related to the presence of a specific species or environment. In these areas, an appropriate behaviour allows to contribute to their preservation. For detailed information, specific forms are accessible for each area.

Vallée du Ruisseau des Aleines

Sensitivity period:

Contact:

[Biodiversité Wallonie](#)



Anciennes ardoisières de la Côte de Croc (Paliseul)

Sensitivity period:

Contact:

[Biodiversité Wallonie](#)

Site of high biological interest

Bois de Bertrifontaine au lieu-dit 'Frèneuse' (Paliseul; Bertrix)

Sensitivity period:

Contact:

[Biodiversité Wallonie](#)

Site of high biological interest

Galleries de l'ardoisière Sainte-Adèle (Bertrix; Paliseul)

Sensitivity period:

Contact:

[Biodiversité Wallonie](#)

Site of high biological interest

Haustroi - Scayire (Paliseul)

Sensitivity period:

Contact:

[Biodiversité Wallonie](#)

Site of high biological interest

Ste Adele a Fays-les-Veneurs (Ardoisiere)

Sensitivity period:

Contact:

[Biodiversité Wallonie](#)

State-owned nature reserve

Ruisseau de Fays les Veneurs (Paliseul)

Sensitivity period:

Contact:

[Biodiversité Wallonie](#)

Site of high biological interest

Anciennes ardoisieres de la Cote de Croc a Paliseul

Sensitivity period:

Contact:

[Biodiversité Wallonie](#)

Underground cavities of scientific interest

Ardoisière des Séhans (Bertrix)

Sensitivity period:

Contact:

[Biodiversité Wallonie](#)

Site of high biological interest