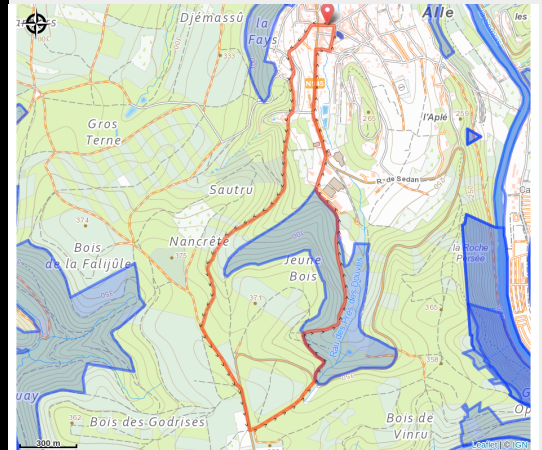


Jeune Bois



No photo



Useful information

Practice : On foot

Duration : 1 h 45

Length : 5.5 km

Trek ascent : 200 m

Difficulty : Medium

Type : Loop

Accessibility : Pushchair

Trek

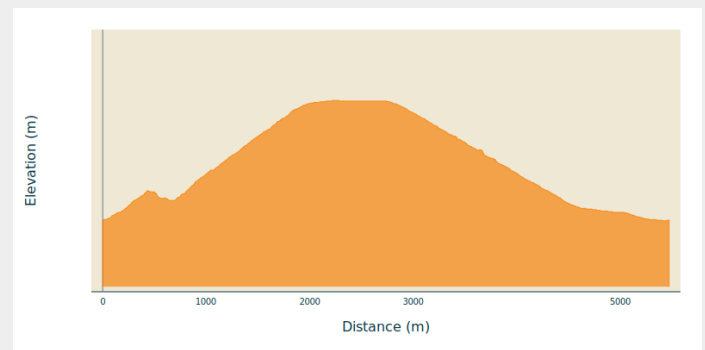
Departure : 5550 - Alle

Arrival : 5550 - Alle

Markings : ■ Horizontal rectangle - Yellow

Cities : 1. Vresse-sur-Semois

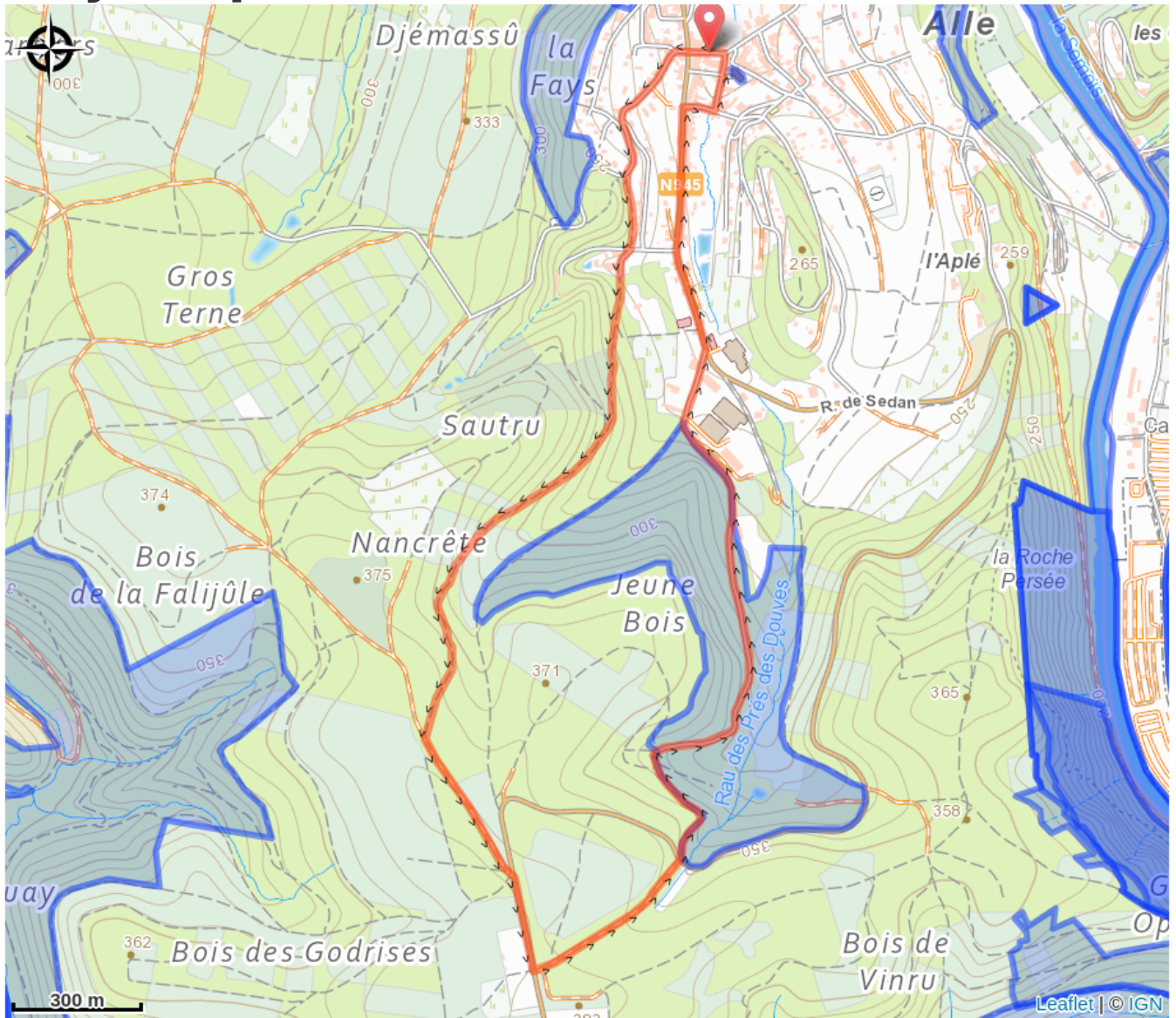
Altimetric profile



Min elevation 198 m Max elevation 381 m

This easy walk takes you through beautiful deciduous forests to the heights of Alle. You will find a view of Ardois'Alle (old slate mine to visit) and also of the economic activity with the sawmill. Stroll through the village of Alle and read the quotes about the slate. A nice refreshing surprise awaits you at the end of the walk.

On your path...



All useful information

Accessibility

Pushchair

Environmental sensitive areas

Along your trek, you will go through sensitive areas related to the presence of a specific species or environment. In these areas, an appropriate behaviour allows to contribute to their preservation. For detailed information, specific forms are accessible for each area.

Vallée du Ruisseau de Rebais

Sensitivity period:

Contact:

[Biodiversité Wallonie](#)



Vallée de la Semois en aval d'Alle

Sensitivity period:

Contact:

[Biodiversité Wallonie](#)



Les Cravates (Vresse-sur-Semois)

Sensitivity period:

Contact:

[Biodiversité Wallonie](#)

Site of high biological interest

Vallée de la Semois de Poupehan à Alle (Bouillon; Vresse-sur-Semois)

Sensitivity period:

Contact:

[Biodiversité Wallonie](#)

Site of high biological interest