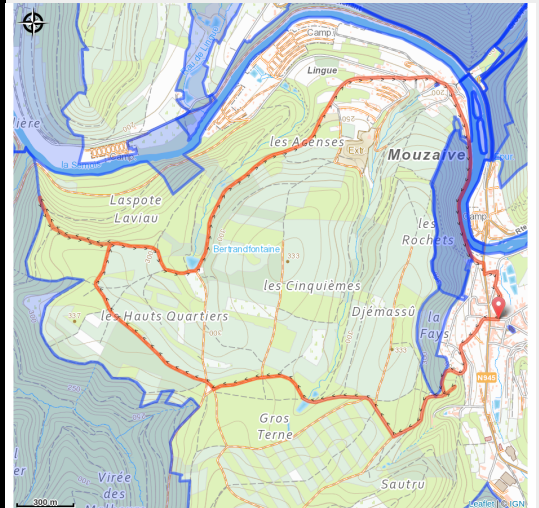


Sacré coeur



Useful information

Practice : On foot

Duration : 2 h 45

Length : 8.5 km

Trek ascent : 226 m

Difficulty : Medium

Type : Loop

Accessibility : Pushchair

Trek

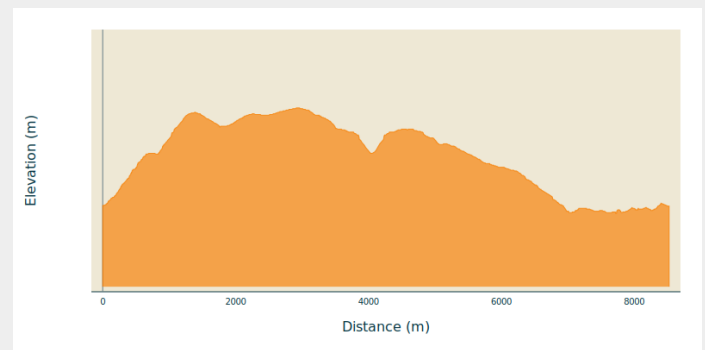
Departure : 5550 - Alle

Arrival : 5550 - Alle

Markings : ◆ Diamond - Red

Cities : 1. Vresse-sur-Semois

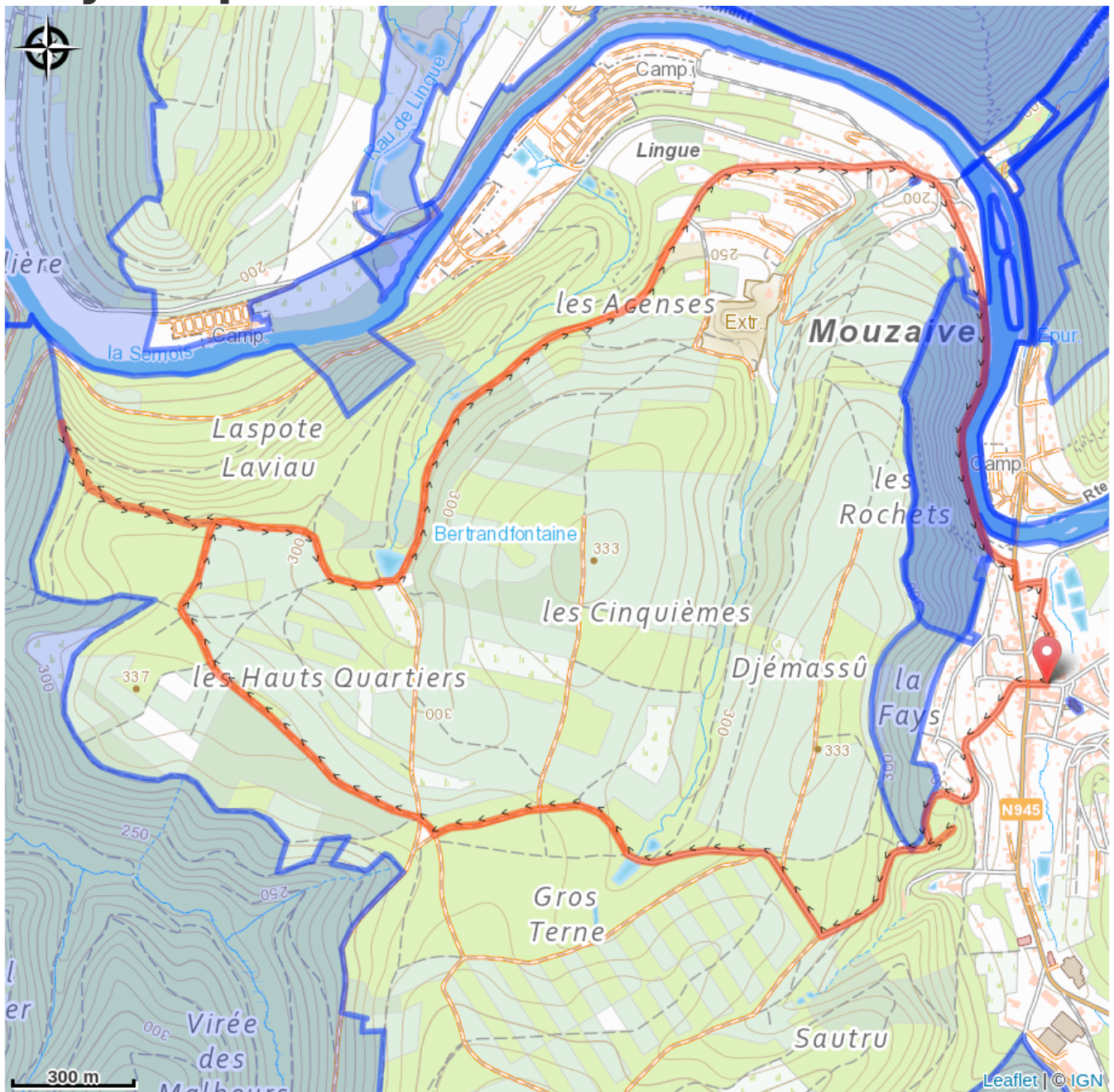
Altimetric profile



Min elevation 189 m Max elevation 333 m

Set off for a beautiful family flight to discover the typical villages of Alle and Mouzaive and their resourcing forests. After a steep climb, the viewpoint of the Sacré Coeur is a beautiful reward. Get closer to our old stones with the architectural defence site of Laspote Laviau and its strategic viewpoint. The ruins of the village of Bertrand Fontaine are also part of the discovery. Climb the belvedere and enjoy a magnificent view over the valley and the Semois.

On your path...



All useful information

Accessibility

Pushchair

Environmental sensitive areas

Along your trek, you will go through sensitive areas related to the presence of a specific species or environment. In these areas, an appropriate behaviour allows to contribute to their preservation. For detailed information, specific forms are accessible for each area.

Vallée du Ruisseau de Rebais

Sensitivity period:

Contact:

[Biodiversité Wallonie](#)



Vallée de la Semois en aval d'Alle

Sensitivity period:

Contact:

[Biodiversité Wallonie](#)



Ardoisière de Laforêt (Vresse-sur-Semois)

Sensitivity period:

Contact:

[Biodiversité Wallonie](#)

Site of high biological interest

Bohan-Membre (Vresse-sur-Semois)

Sensitivity period:

Contact:

[Biodiversité Wallonie](#)

Site of high biological interest

Chairière (Vresse-sur-Semois)

Sensitivity period:

Contact:

[Biodiversité Wallonie](#)

Site of high biological interest

Iles de Mouzaive (Vresse-sur-Semois)

Sensitivity period:

Contact:

[Biodiversité Wallonie](#)

Site of high biological interest

Ruisseau de Gros Fays (Bièvre; Vresse-sur-Semois)

Sensitivity period:

Contact:

[Biodiversité Wallonie](#)

Site of high biological interest

Vallée de la Semois de Poupehan à Alle (Bouillon; Vresse-sur-Semois)

Sensitivity period:

Contact:

[Biodiversité Wallonie](#)

Site of high biological interest

Forêt (Ardoisière de la)

Sensitivity period:

Contact:

[Biodiversité Wallonie](#)

State-owned nature reserve