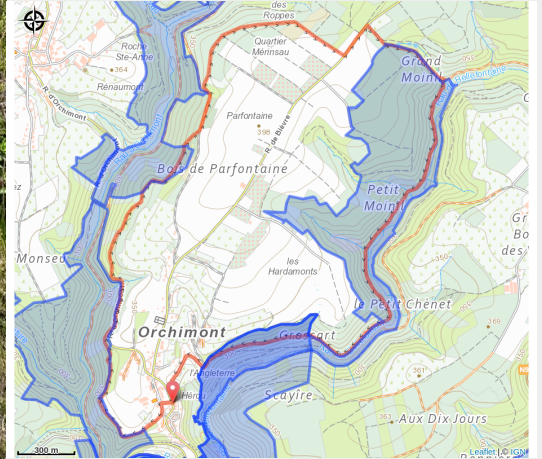


Les moinils



(Libre de droit)



Useful information

Practice : On foot

Duration : 2 h 30

Length : 7.5 km

Trek ascent : 219 m

Difficulty : Medium

Type : Loop

Trek

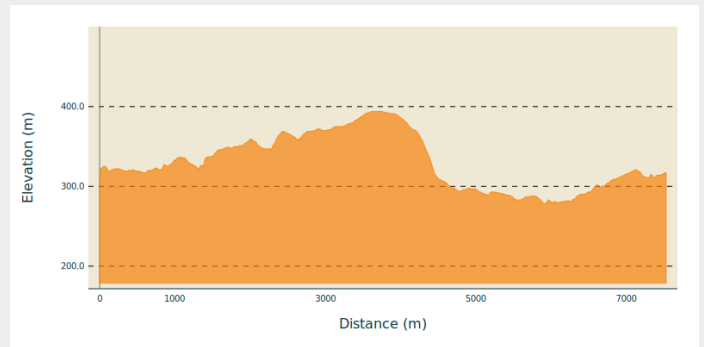
Departure : 5550 - Orchimont

Arrival : 5550 - Orchimont

Markings : ◆ Diamond - Green

Cities : 1. Vresse-sur-Semois

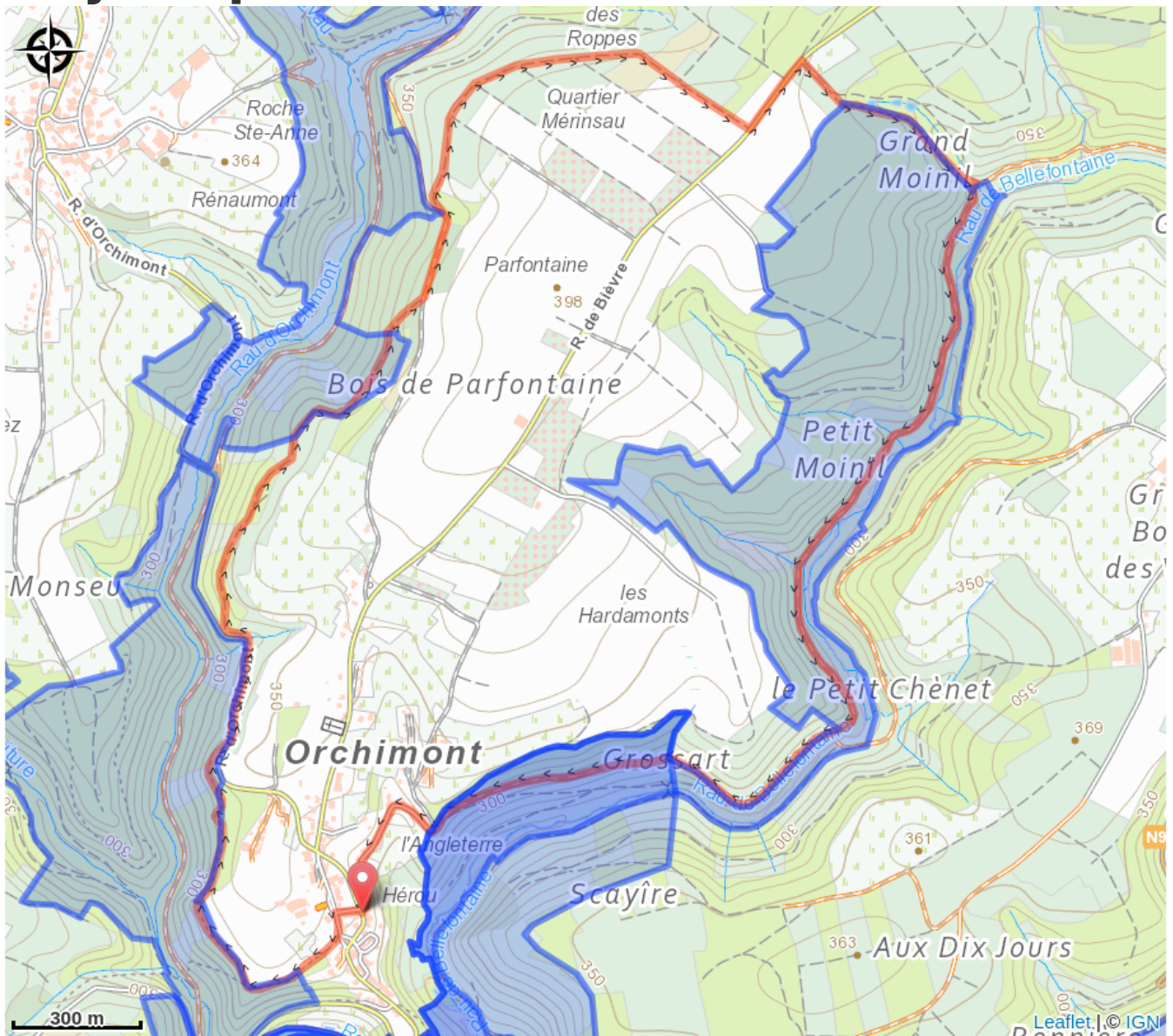
Altimetric profile



Min elevation 278 m Max elevation 394 m

Belle promenade dans les environs d'Orchimont. La vallée du ruisseau de Bellefontaine vous conduit le long des formations rocheuses spectaculaires.

On your path...



All useful information

Environmental sensitive areas

Along your trek, you will go through sensitive areas related to the presence of a specific species or environment. In these areas, an appropriate behaviour allows to contribute to their preservation. For detailed information, specific forms are accessible for each area.

Bassin du Ruisseau du Ru au Moulin

Sensitivity period:

Contact:

[Biodiversité Wallonie](#)



Orchimont (Bièvre; Vresse-sur-Semois)

Sensitivity period:

Contact:

[Biodiversité Wallonie](#)

Site of high biological interest