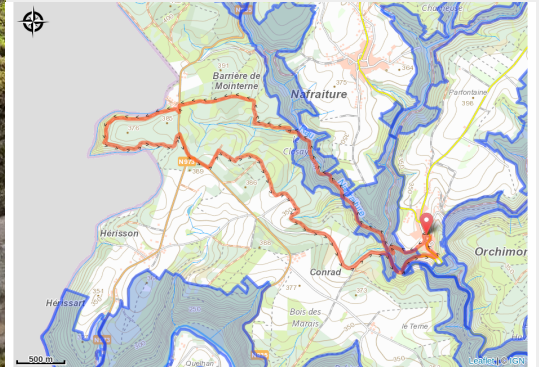


La roche à Campa



(MTPBA)



Useful information

Practice : On foot

Duration : 3 h

Length : 10.8 km

Trek ascent : 338 m

Difficulty : Medium

Type : Loop

Trek

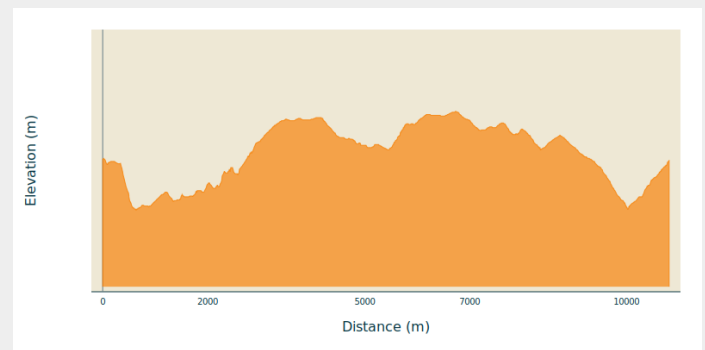
Departure : 5550 - Orchimont

Arrival : 5550 - Orchimont

Markings : ■ Horizontal rectangle - red

Cities : 1. Vresse-sur-Semois

Altimetric profile



Through an intimate little valley, this hike takes you to the Roche Campa on the border with France. The rock massif, located as if at the end of the world, offers a beautiful view of the surrounding nature.

This loop is signposted in both directions under numbers 30 and 31.

All useful information

Environmental sensitive areas

Along your trek, you will go through sensitive areas related to the presence of a specific species or environment. In these areas, an appropriate behaviour allows to contribute to their preservation. For detailed information, specific forms are accessible for each area.

Bassin du Ruisseau du Ru au Moulin

Sensitivity period:

Contact:

[Biodiversité Wallonie](#)



Bohan-Membre (Vresse-sur-Semois)

Sensitivity period:

Contact:

[Biodiversité Wallonie](#)

Site of high biological interest

Orchimont (Bièvre; Vresse-sur-Semois)

Sensitivity period:

Contact:

[Biodiversité Wallonie](#)

Site of high biological interest